

IMAGE FILES



LEGEND

- ① MALSr STATION NUMBER
- ▬ EXISTING MALS STATION
- ▬ NEW MALS STATION
- EXISTING RAIL STATION
- NEW RAIL STATION
- E— NEW MALSr CABLES
- - - EXISTING CROP LINE
- - - NEW CROP LINE
- NEW 6" AGGREGATE BASE ON GEOTEXTILE FABRIC INCLUDING 6" EXCAVATION
- ② 20 S.Y.
- ③ 20 S.Y.
- ④ 20 S.Y.
- ⑤ 20 S.Y.
- ⑥ 202 S.Y.
- ⑦ 60 S.Y.
- ⑧ 60 S.Y.
- ⑨ 48 S.Y.
- ⑩ 48 S.Y.
- ⑪ 52 S.Y.
- ⑫ 53 S.Y.
- ⑬ 55 S.Y.
- PANEL 12 S.Y.
- ▨ NEW 4" BITUMINOUS SURFACE ON 6" AGGREGATE BASE/GEOTEXTILE INCLUDING 8" EXCAVATION
- ▨ NEW 2" AGGREGATE BASE COURSE PLACED ON EXISTING ACCESS ROAD

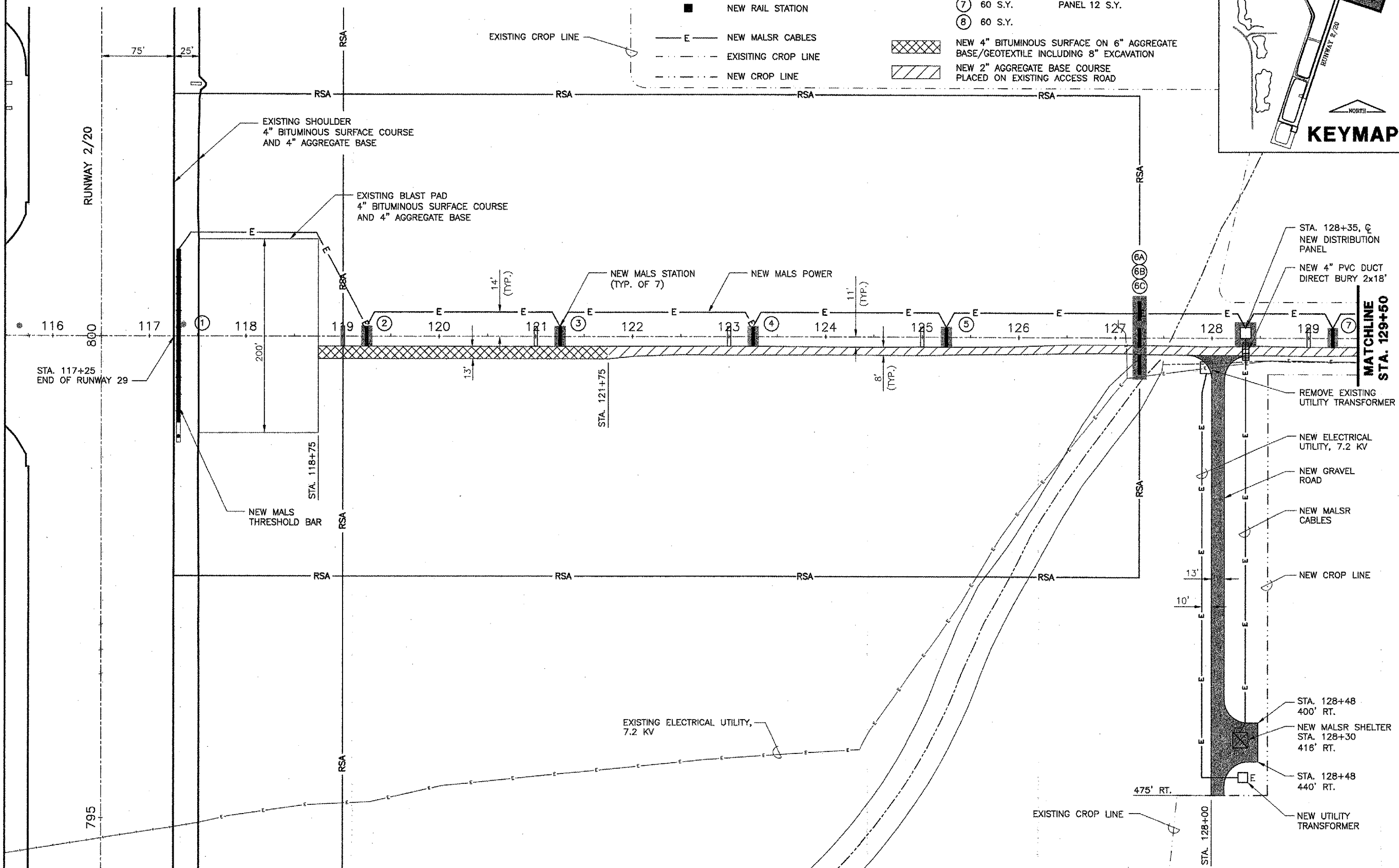
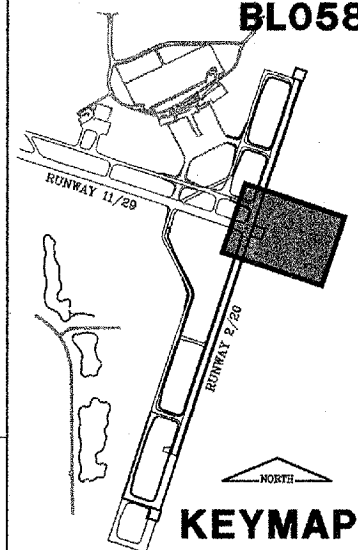
BL058

K:\Bloomington\0308503\draw\sheet\ FILE: 011\_MALSr\_SITE\_PLAN\_1.DWG  
 LAYOUT: Layout1  
 UPDATE BY: dallen  
 SURVEY BOOK #  
 DATE: Wed 12/22/04 9:31am  
 XREF DWG: DPABase.dwg  
 PRPGEO.dwg  
 TB.DWG  
 CLNTINF.DWG  
 KEY.dwg

REVISIONS

NUMBER	BY	DATE

0 1 2  
 THIS BAR IS EQUAL TO 2" AT FULL SCALE (34X22).



BLOOMINGTON-NORMAL AIRPORT AUTHORITY  
 CENTRAL ILLINOIS REGIONAL AIRPORT  
 BLOOMINGTON, ILLINOIS

INSTALL RUNWAY 29 MALSr  
 MALSr SITE PLAN 1

**CMT**  
 CRAWFORD, MURPHY & TILLY, INC.  
 CONSULTING ENGINEERS  
 © Copyright, CMT, Inc.

DESIGN BY: TM  
 DRAWN BY: CMT  
 CHECKED BY: RLV  
 APPROVED BY: RLV  
 DATE: 12/25/2004  
 JOB No: 03085-03-00