

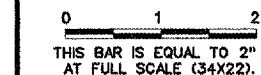
A DETAIL FRANGIBLE EMT MALS BAR (STA 119+25 THRU STA 125+25) FOUNDATION
 SEE NOTES 3, 7, AND 13.
 SCALE IN FEET

MALS FRANGIBLE EMT LIGHT BAR NOTES
 SEE SPECIFICATION FAA-GL-918C PARAGRAPH 13A.2.

CONSTRUCT THE MALS BAR SUCH THAT:

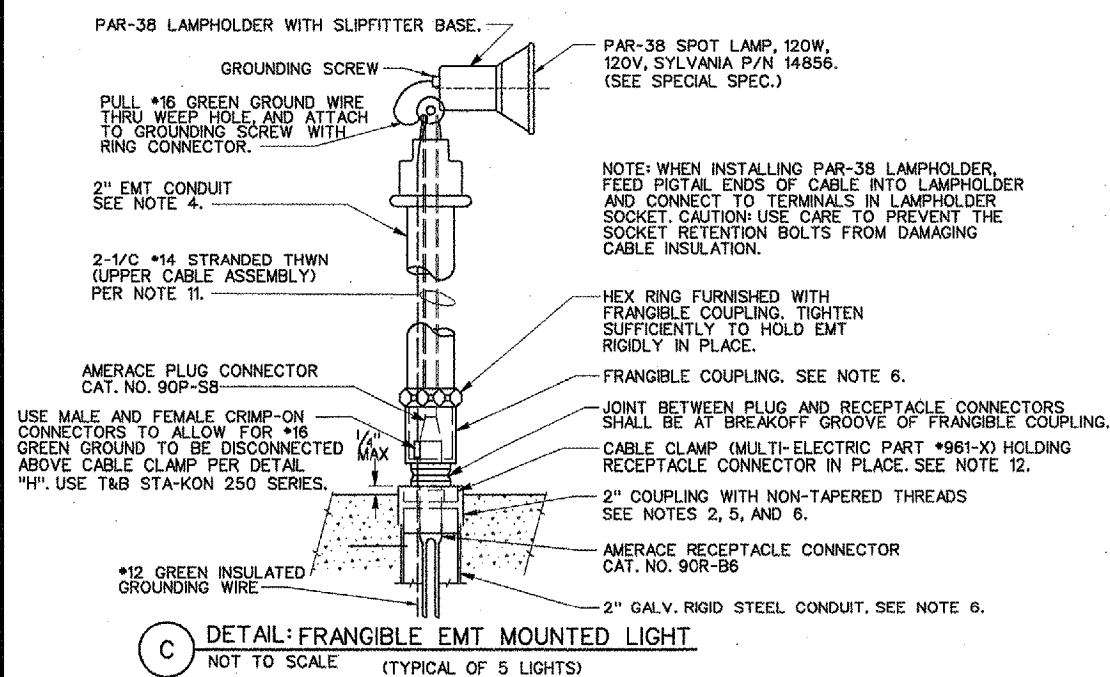
1. THE LIGHT BASE TOP FLANGE IS HORIZONTAL WITHIN A TOLERANCE OF 1/16" VERTICAL PER 1 FOOT HORIZONTAL. SEE NOTE 7.
2. THE 2" GALVANIZED RIGID STEEL (GRS) COUPLINGS ARE VERTICAL WITHIN A TOLERANCE OF 1/16" HORIZONTAL PER 1 FOOT VERTICAL. SEE NOTE 7.
3. THE LIGHT BAR MEETS THE INSTALLATION TOLERANCES REQUIRED IN SPECIFICATION FAA-GL-918C PARAGRAPHS 13A.2b AND 13A.2e. SEE NOTE 7.
4. EMT CONDUIT IS USED WHERE SPECIFIED WITHOUT SUBSTITUTION. EMT IS CUT SQUARE AND DEBURRED.
5. APPLY ANTI-SEIZE COMPOUND TO THE THREADS OF THE FRANGIBLE COUPLING AND OF THE LIGHT BASE FLANGE BOLTS.
6. THE 2" GRS CONDUIT IS THREADED INTO THE 2" COUPLING SUCH THAT WHEN THE FRANGIBLE COUPLING IS THREADED TIGHTLY INTO THE 2" COUPLING, ONE THREAD OF THE FRANGIBLE COUPLING PROJECTS ABOVE THE TOP OF THE 2" COUPLING.
7. TO ACHIEVE CONSTRUCTION WITHIN THE TOLERANCES OF NOTES 1, 2 AND 3 ABOVE, IT IS RECOMMENDED THAT THE ASSEMBLY OF LIGHT BASE, CONDUITS, AND COUPLINGS BE HELD IN PLACE WITH A JIG DURING CONCRETE PLACEMENT AND SET. IT IS NOT ACCEPTABLE TO CORRECT ANY OUT-OF-TOLERANCE DIMENSIONS BY TILTING OR BENDING EMT LIGHT MASTS.
8. THE TEMPORARY 17 3/4" DIAMETER PLYWOOD COVER PROVIDED WITH THE LIGHT BASE IS USED TO FORM THE 1/4" DEEP RECESS IN THE CONCRETE FOR THE BASE PLATE, AND TO PROVIDE THE 3/8" CLEARANCE.
9. EACH CABLE ENTERING OR EXITING A SPLICE HAS A SLACK LOOP AT THE SPLICE OF SUFFICIENT LENGTH TO MAKE THE SPLICE ABOVE THE LIGHT BASE.
10. LOWER CABLE ASSEMBLY IS 2-1/C *10 TYPE U.S.E. CABLES AND WATERTIGHT RECEPTACLE CONNECTOR, AMERACE CAT NO 90R-B6. CONNECTOR OF LOWER CABLE ASSEMBLY IS HELD IN PLACE BY CABLE CLAMP PER DETAIL "C".
11. UPPER CABLE ASSEMBLY IS 2-1/C *14 STRANDED TYPE THWN CABLES AND WATERTIGHT PLUG CONNECTOR, AMERACE CAT NO 90P-S8. JOINT BETWEEN PLUG AND RECEPTACLE CONNECTORS IS AT THE FRANGIBLE COUPLING BREAKOFF GROOVE.
12. A HOLE IS DRILLED IN THE CABLE CLAMP, AND THE *12 GREEN INSULATED GROUNDING CONDUCTOR IS PULLED THROUGH IT.
13. LIGHT BAR SHALL BE CENTERED ON A LINE PERPENDICULAR TO THE RUNWAY CENTERLINE.

REVISIONS		
NUMBER	BY	DATE

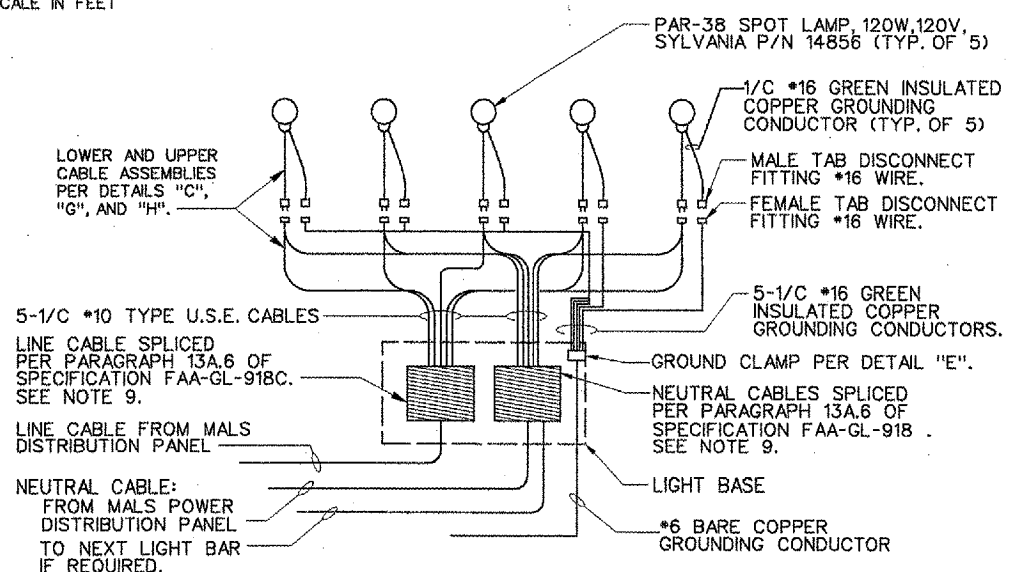


BLOOMINGTON-NORMAL AIRPORT AUTHORITY
 CENTRAL ILLINOIS REGIONAL AIRPORT
 BLOOMINGTON, ILLINOIS

MALS EMT LIGHT BAR - 1



C DETAIL: FRANGIBLE EMT MOUNTED LIGHT
 NOT TO SCALE (TYPICAL OF 5 LIGHTS)



B DETAIL: WIRING DIAGRAM FOR FRANGIBLE EMT MALS BAR
 (STA 119+25 THRU STA 125+25)

CMT
 CRAWFORD, MURPHY & TILLY, INC.
 CONSULTING ENGINEERS

DESIGN BY:	TM
DRAWN BY:	CMT
CHECKED BY:	RMV
APPROVED BY:	RMV
DATE:	12/25/2004
JOB No:	030850300