

NOTES:

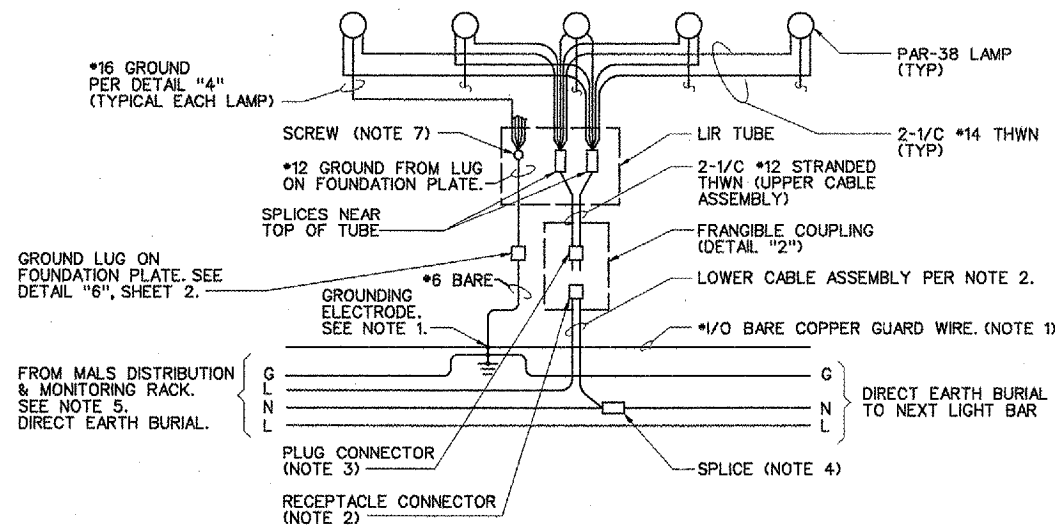
LOW IMPACT RESISTANT STRUCTURES ARE MANUFACTURED BY JAQUITH INDUSTRIES, INC. 600 E. BRIGHTON AVENUE, SYRACUSE, NY 13210-4213 PHONE: (315) 478-5700

CONSTRUCT THE MALS SUCH THAT:

- GROUNDING CONDUCTORS ARE ATTACHED TO GROUNDING ELECTRODES WITH EXOTHERMIC WELDING KITS.
- LOWER CABLE ASSEMBLIES ARE 2-1/C \*8 TYPE U.S.E. CABLES AND RECEPTACLE CONNECTOR, AMERACE CAT. NO. 90R-C6. THE RECEPTACLE CONNECTOR IS HELD IN PLACE BY THE CABLE CLAMP PER DETAIL "2".
- UPPER CABLE ASSEMBLIES ARE 2-1/C \*12 STRANDED THWN CABLES AND AMERACE PLUG CONNECTOR, STYLE, 90P-S6.
- SPLICES ARE MADE WITH 3M SPLICING KITS AND CRIMPIT CONNECTORS.
- CIRCUITRY IS PER DRAWING SYSTEM WIRING DIAGRAM - 1 & - 2.
- CAUTION IS EXERCISED TO PREVENT SOCKET RETENTION BOLTS FROM DAMAGING CABLE INSULATION.
- THE \*10 SLOTTED HEX HEAD STAINLESS STEEL SCREWS (3 EACH COME WITH EACH TUBE CAP) ARE USED TO JOIN GROUND WIRES. ALSO USE THE SCREWS WITH CLAMPS, TO CLAMP BUNDLES OF CABLES TO THE INSIDE OF THE TUBE.
- LIR STRUCTURE IS ASSEMBLED PER DRAWING LIR ASSEMBLY DETAILS - 1 & - 2.
- EACH POWER CABLE OR GROUND WIRE CONNECTED TO A PAR-38 LAMPHOLDER HAS AT LEAST 3" OF SLACK, FOR EASE OF MAINTENANCE.
- THE 2" CONDUIT IS THREADED INTO THE 2" COUPLING SUCH THAT WHEN THE FRANGIBLE COUPLING IS THREADED TIGHTLY INTO THE 2" COUPLING, ONE THREAD OF THE FRANGIBLE COUPLING PROJECTS ABOVE THE TOP OF THE 2" COUPLING.

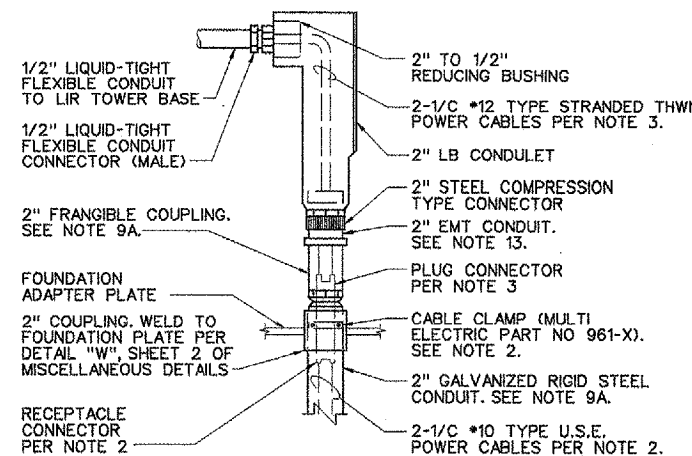
(NOTES CONTINUED ON MALS SHEET MG-20 LIR TOWER - 2)

1 DETAIL-TILT-DOWN MALS BAR - STATIONS 127+25 THROUGH 131+25 (STA. 6-8) SCALE: NONE (LOOKING PARALLEL TO CL OF RUNWAY) SEE NOTE 8.

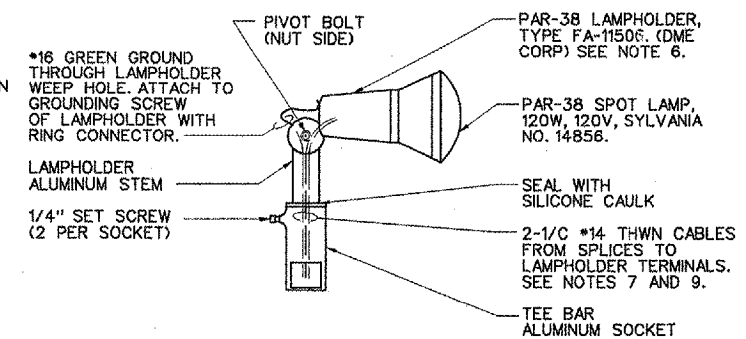


3 DETAIL-CONNECTIONS FOR FRANGIBLE LIR LIGHT BAR STATIONS 127+25 THROUGH 131+25 (STA. 6-8) SCALE: NONE

2 DETAIL-MALS BAR CONDULET STATIONS 127+25 THROUGH 131+25 SCALE: NONE



2 DETAIL-MALS BAR CONDULET STATIONS 127+25 THROUGH 131+25 SCALE: NONE



4 DETAIL-PAR-38 LAMPHOLDER MOUNTING SCALE: NONE

REVISIONS

NUMBER	BY	DATE

0 1 2  
THIS BAR IS EQUAL TO 2" AT FULL SCALE (34X22).

BLOOMINGTON-NORMAL AIRPORT AUTHORITY  
CENTRAL ILLINOIS REGIONAL AIRPORT  
BLOOMINGTON, ILLINOIS

MALS MG-20 LIR TOWER - 1

CMT  
CRANFORD MURPHY & TILLY, INC.  
CONSULTING ENGINEERS  
©Copyright CMT, Inc.

DESIGN BY:	TM
DRAWN BY:	CMT
CHECKED BY:	RW
APPROVED BY:	RW
DATE:	12/25/2004
JOB No:	030850300