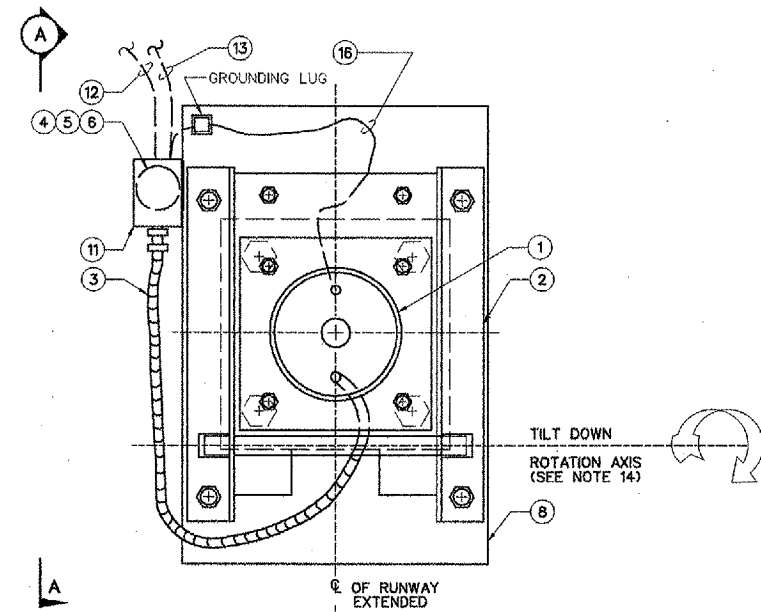
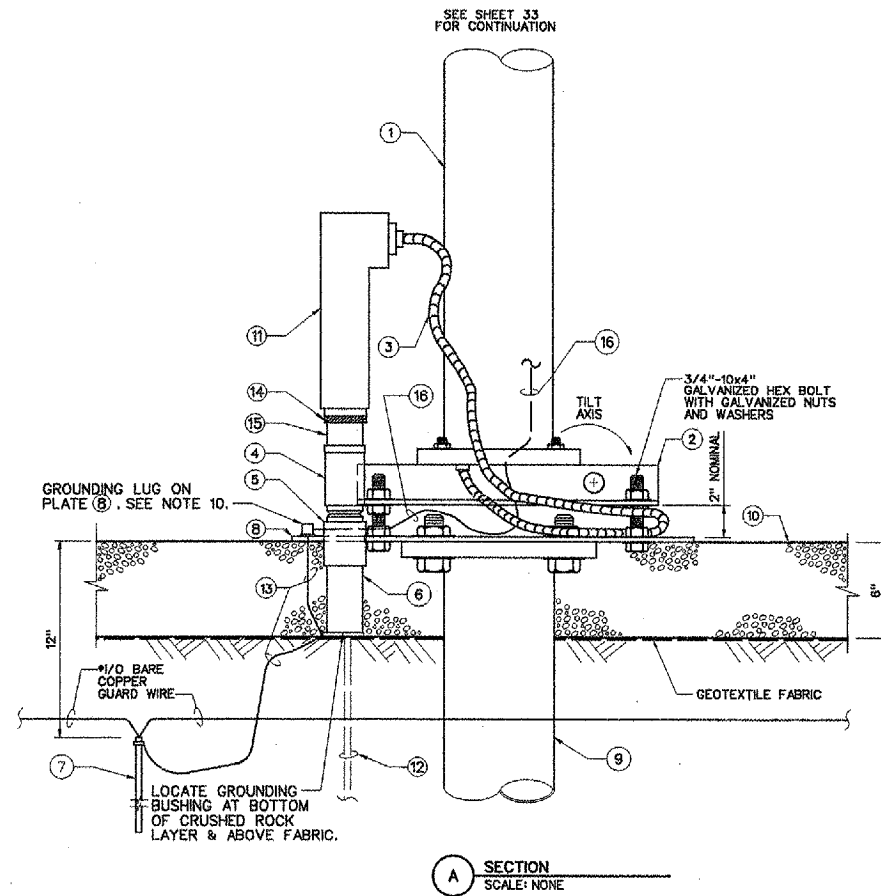


5 DETAIL-FOUNDATION PLATE
 SCALE: 3" = 1'-0"



6 DETAIL-LIR TOWER MOUNTING
 SCALE: 3" = 1'-0"



A SECTION
 SCALE: NONE

- NOTES:** (CONTINUED) CONSTRUCT THE MALS SUCH THAT:
10. WELDS AND ALL OTHER PLACES WHERE THE ZINC COATING HAS BEEN DAMAGED, ARE Sanded TO BRIGHT METAL AND COATED WITH ZINC RICH COMPOUND (ZRC), PER SPECIFICATIONS.
 11. ENOUGH SLACK LENGTH IS PROVIDED TO PREVENT STRAIN ON THE CONDUIT AND CABLES, WHEN THE TOWER IS TILTED UP AND DOWN.
 12. CABLING AND ELECTRICAL CONNECTIONS ARE PER DWG. GL-D-6606-11-4.
 13. SUBSTITUTION OF RIGID CONDUIT FOR EMT IS NOT ALLOWED.
 14. THE TOWER TILT DOWN DIRECTION IS IN ACCORDANCE WITH TABLE "A", OF DWG. GL-D-6606-11-2, SHEET 2.
 15. USE STAINLESS STEEL FASTENERS THROUGHOUT. MAKE UP ALL STAINLESS STEEL CONNECTIONS WITH ANTI-SEIZE COMPOUND RATED FOR STAINLESS STEEL.

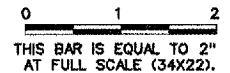
NUMBERED LEGEND: INSTALL THE FOLLOWING ITEMS:

- 1 FRANGIBLE LIR T-BAR TOWER.
- 2 TOWER BASE ASSEMBLY.
- 3 1/2" LIQUID-TIGHT FLEXIBLE CONDUIT. SEE NOTE 11.
- 4 2" FRANGIBLE COUPLING.
- 5 2" GALVANIZED RIGID STEEL CONDUIT COUPLING WELDED PERPENDICULAR TO FOUNDATION PLATE PER DETAIL "W" (MISCELLANEOUS DETAILS - 1 SHEET). SEE NOTES 9A AND 10.
- 6 2" GALVANIZED RIGID STEEL CONDUIT WITH GROUNDING BUSHING EXTENDED TO BOTTOM OF CRUSHED ROCK COURSE.
- 7 3/4"x10' COPPERCLAD STEEL GROUNDING ELECTRODE.
- 8 3/8" FOUNDATION PLATE PER DETAIL "5", ATTACHED TO ANCHOR FOUNDATION WITH 1" BOLTS, AND FLUSH WITH CRUSHED ROCK FINISHED GRADE.
- 9 SCREW-IN-ANCHOR FOUNDATION, A.B. CHANCE CAT NO T112-0262, 7' LONG.
- 10 CRUSHED ROCK MAINTENANCE AREA PER DETAIL "9", ON SHEET 3.
- 11 2" LB CONDULET ON FRANGIBLE COUPLING PER DETAIL "2", SHEET 1.
- 12 MALS POWER CABLES, LOWER CABLE ASSEMBLY PER SHEET 1.
- 13 #6 BARE COPPER GROUND WIRE. GROUND WIRE IS CONNECTED TO GROUND LUG ON FOUNDATION PLATE PER DETAIL "3", SHEET 1. #6 BARE TRANSITIONS TO WIRE #6 IN THE LUG.
- 14 2" STEEL COMPRESSION TYPE CONNECTOR.
- 15 2" EMT CONDUIT.
- 16 #12 GREEN INSULATED GROUND WIRE. SEE NOTE 11.

RODENT CONTROL:
 PLUG OR SCREEN ALL HOLES TO PREVENT RODENT ACCESS TO INSIDE OF THE LIR TOWER.

REVISIONS

NUMBER	BY	DATE



BLOOMINGTON-NORMAL AIRPORT AUTHORITY
CENTRAL ILLINOIS REGIONAL AIRPORT
BLOOMINGTON, ILLINOIS

MALS MG-20 LIR TOWER - 2

CMT
 CRAWFORD, MURPHY & TILLY, INC.
 CONSULTING ENGINEERS

© Copyright CMT, Inc.

DESIGN BY:	TM
DRAWN BY:	CMT
CHECKED BY:	RLV
APPROVED BY:	RLV
DATE:	12/25/2004
JOB No:	030850300