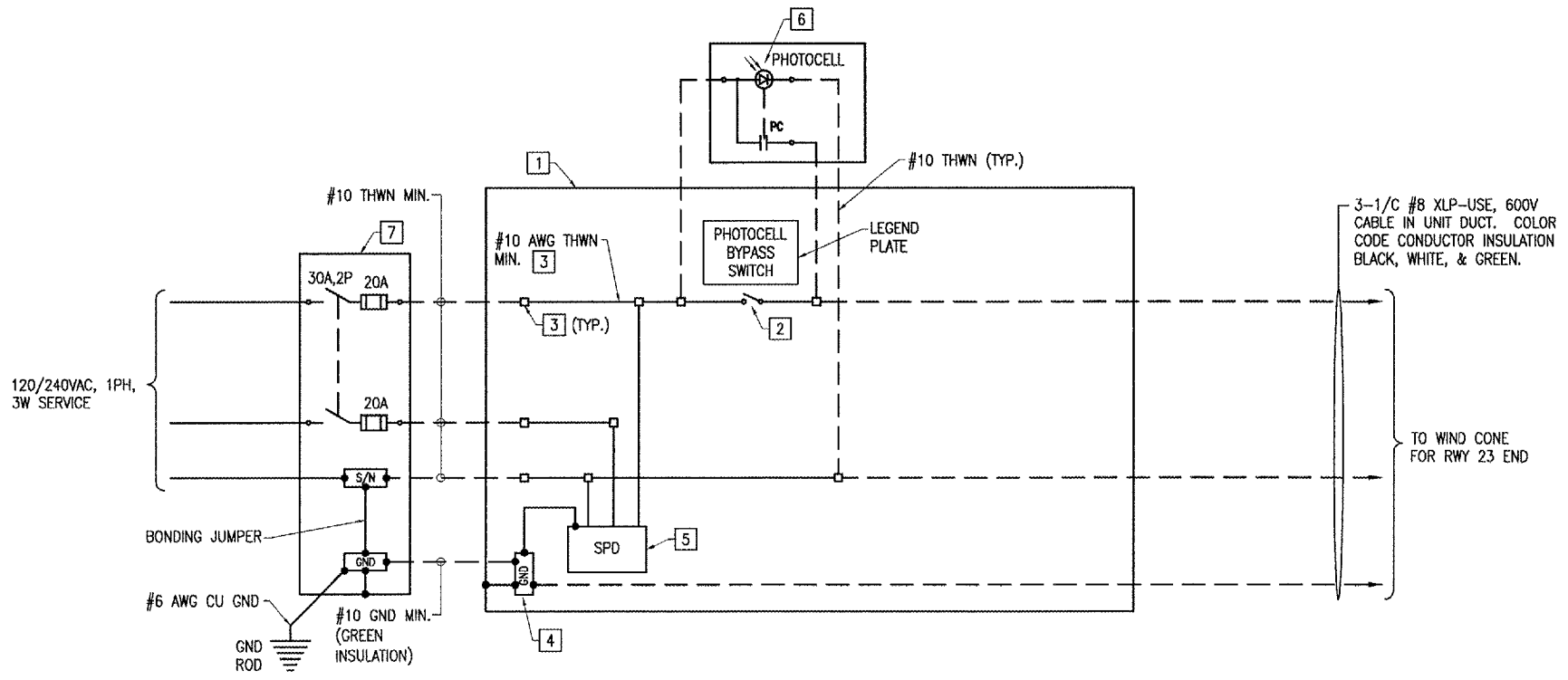


CONTROL PANEL FOR RWY 5 WIND CONE & RWY 15 WIND CONE

PROVIDE LEGEND PLATE FOR CONTROL PANEL LABELED
"CONTROL PANEL RWY 5 WIND CONE, RWY 15 WIND CONE"



CONTROL PANEL FOR RWY 23 WIND CONE

PROVIDE LEGEND PLATE FOR CONTROL PANEL LABELED
"CONTROL PANEL RWY 23 WIND CONE"

KEYED NOTES

- 1 UL LISTED NEMA 4X STAINLESS STEEL CONTROL PANEL ENCLOSURE ADEQUATELY SIZED TO HOLD THE RESPECTIVE COMPONENTS AND EQUIPMENT. PROVIDE MOUNTING BRACKET OR INNER DOOR TO MOUNT PHOTOCELL BYPASS SWITCH.
- 2 20 AMP, 120 VAC, 1 POLE SPECIFICATION GRADE TOGGLE SWITCH. MOUNT ON PANEL INNER DOOR OR SUPPORT BRACKET PROVIDE LEGEND PLATES LABELED "PHOTOCELL BYPASS SWITCH", "ON", & "OFF" TO INDICATE SWITCH FUNCTION & POSITIONS.
- 3 POWER CONTROL WIRING SHALL BE SIZED AS REQUIRED PER NEC MINIMUM #10 AWG TYPE MTW, THW, OR THWN, COPPER. TERMINAL BLOCKS FOR POWER & CONTROL WIRING SHALL BE 600 VOLT, WITH AMPERAGE RATINGS IN CONFORMANCE WITH NEC TABLE 310-16 USING 75 DEGREE C WIRE FOR THE RESPECTIVE WIRE LUG RANGE, BOX LUG TYPE, SQUARE D CLASS 9080, TYPE GC6, OR APPROVED EQUAL.
- 4 EQUIPMENT GROUNDING BAR: PROVIDE A GROUNDING BAR MOUNTED AND BONDED INSIDE THE PANEL ENCLOSURE, ADEQUATELY SIZED TO ACCOMMODATE ALL GROUND CONDUCTORS TO OR FROM THE CONTROL PANEL. TERMINATE ONE GROUND WIRE PER LUG/TERMINAL.
- 5 U.L. LISTED PER UL1449, AC SURGE PROTECTOR SUITABLE FOR 120/240 VAC, 1 PH, 3W PLUS GROUND SYSTEM, WITH SURGE CURRENT RATING OF 40 KA (MIN.), 8x20 MICROSECOND WAVE, PER MODE, AND STATUS INDICATION LIGHTS, JOSLYN MODEL 1265-21, SQUARE D CAT. NO. TVS120XR40S OR APPROVED EQUAL. MAINTAIN LEADS AS SHORT & AS STRAIGHT AS POSSIBLE. INCLUDE MOUNTING BRACKET.
- 6 PHOTOCELL RATED 2000 WATTS AT 120 VAC, WITH OFF DELAY, AND -40 DEGREE C TO 60 DEGREE C OPERATING TEMPERATURE RANGE, TORK MODEL NO. 2101, OR APPROVED EQUAL. PHOTOCELL SHALL BE MOUNTED JUST ABOVE ROOF LEVEL OF RESPECTIVE BUILDING WHERE CONTROL PANEL IS INSTALLED. PHOTOCELL SHALL FACE NORTH.
- 7 30 AMP, 2 POLE, 240 VAC, U.L. LISTED, HEAVY DUTY FUSIBLE SAFETY SWITCH IN A NEMA 4X STAINLESS STEEL ENCLOSURE, WITHOUT KNOCKOUTS, SQUARE D CLASS 3110, CAT. NO. H221DS OR APPROVED EQUAL. PROVIDE TWO 20 AMP, U.L. LISTED CLASS RK5 FUSES AS MANUFACTURED BY BUSSMANN. INCLUDE 2 SPARE FUSES OF THE SAME SIZE AND TYPE. INCLUDE LEGEND PLATE "LABELED SERVICE DISCONNECT 120/240 VAC, 1 PH, 3W MAX FUSE SIZE: 20 AMP." SEE "ELECTRICAL ONE LINE DIAGRAM FOR WIND CONES" FOR ADDITIONAL DETAILS.

NOTES

1. FURNISH & INSTALL A WEATHERPROOF WARNING LABEL FOR EACH SERVICE DISCONNECT & CONTROL PANEL TO WARN PERSONS OF POTENTIAL ELECTRIC ARC FLASH HAZARDS, PER THE REQUIREMENTS OF NEC 110.16 "FLASH PROTECTION". LABELS SHALL BE HAZARD COMMUNICATION SYSTEMS, LLC (190 OLD MILFORD RD., P.O. BOX 1174, MILFORD, PA 18337 PHONE: 1-877-748-0244) PART NO. H6010-9VWHBJ OR APPROVED EQUAL.
2. ELECTRIC SERVICE & WIND CONE CONTROL WORK SHALL BE PAID FOR UNDER THE FOLLOWING:
AS800460 ELECTRICAL SERVICE FOR RUNWAY 5 WIND CONE PER LUMP SUM
AS800461 ELECTRICAL SERVICE FOR RUNWAY 23 WIND CONE PER LUMP SUM

WORK SHOWN ON THIS SHEET IS FOR BID ALTERNATE NO. 1

BY	
REVISION	
DATE	

MT. VERNON AIRPORT

 MT. VERNON, ILLINOIS
 I.L. PROJ.: MW-XXXX
 A.I.P. PROJ.: 3-17-00XX-XX

U.L. Project No. 819-05RWYD-0800	FILE NAME: E-608.DWG	SCALE: NONE	DATE: 01/14/05
LAYOUT	KNL	12/13/04	
DRAWN	MV	12/13/04	
REVIEWED	CAH	01/14/05	

HANSON
 Hanson Professional Services Inc.
 15215 South State Street
 Springfield, Illinois 62703-2886
 Offices Nationwide

REHABILITATE RUNWAY 5-23
 CONTROL PANELS FOR RWY 5, RWY 15, & RWY 23 WIND CONES

JAN 31, 2005 11:18 AM BAK
 I:\AIRPORTS\MTVERNON\819-05RWY\DESIGN\SHEETS\E-608.DWG - Work-FLR