

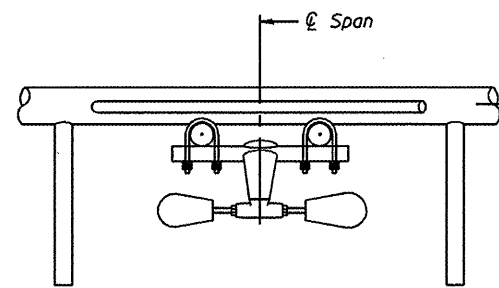
PLAN DETAIL "A"  
Span between Panel Points

PLAN DETAIL "B"  
Span at Panel Point

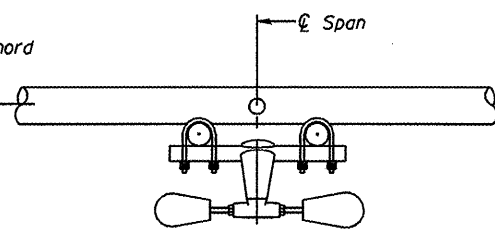
PLAN DETAIL "C"  
Span at Chord Splice

\* Center of horizontal to center of splice dimension may vary. Verify before drilling holes in mounting tube.

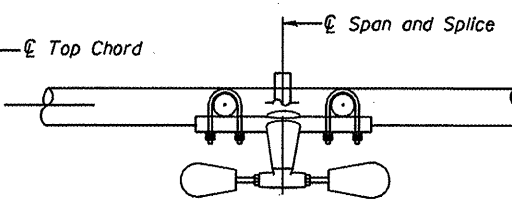
**NOTES**  
 Damper: One damper per truss. (31 lbs. minimum Stockbridge-Type Aluminum - 29" minimum between ends of weights) Cost included in Overhead Sign Structure...  
 Materials: Materials: Aluminum tubes shall be ASTM B221 alloy 6061 temper T6. Cost included in Overhead Sign Structure...



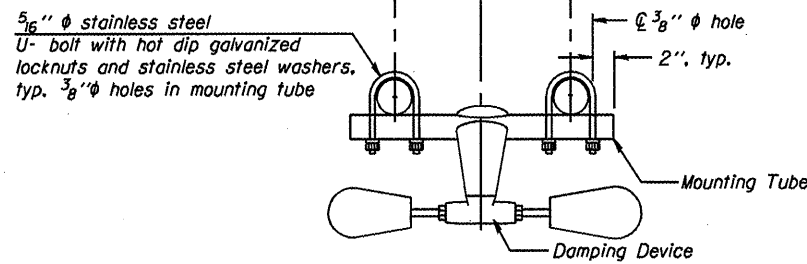
SECTION A-A



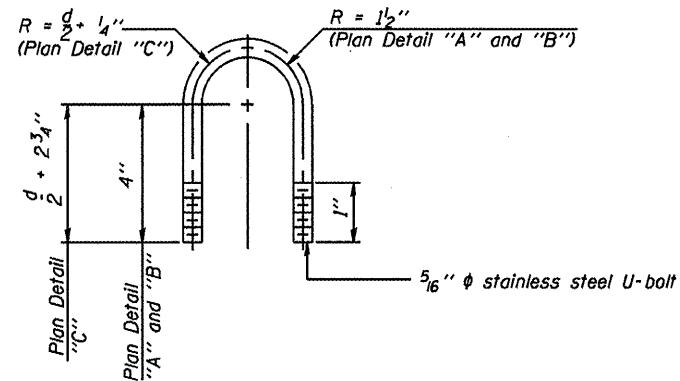
SECTION B-B



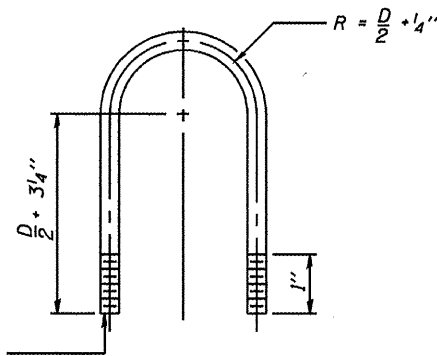
SECTION C-C



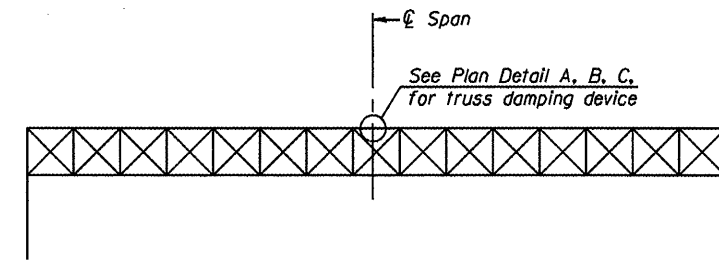
TRUSS DAMPING DEVICE CONNECTION DETAIL  
(Typical)



DAMPING DEVICE MOUNTING TUBE U-BOLT DETAIL  
(Typical)



TOP CHORD TO CROSS TUBE U-BOLT DETAIL  
(Typical - Detail "A" and "B")



ELEVATION  
Aluminum Overhead Sign Truss

OS-A-D

7-1-10

USER NAME *	DESIGNED -	REVISED -
PLOT SCALE *	CHECKED -	REVISED -
PLOT DATE *	DRAWN -	REVISED -
	CHECKED -	REVISED -

STATE OF ILLINOIS  
DEPARTMENT OF TRANSPORTATION

OVERHEAD SIGN STRUCTURE  
DAMPING DEVICE

F.A. RTE.	SECTION	COUNTY	TOTAL SHEETS	SHEET NO.
Various	D-6 OVD SIN STR REPL II-II	Logan/Sangamon	29	13
			CONTRACT NO. 46134	
ILLINOIS FED. AID PROJECT				