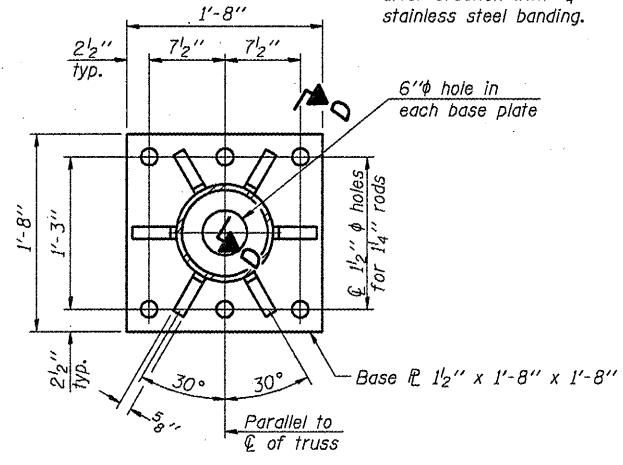
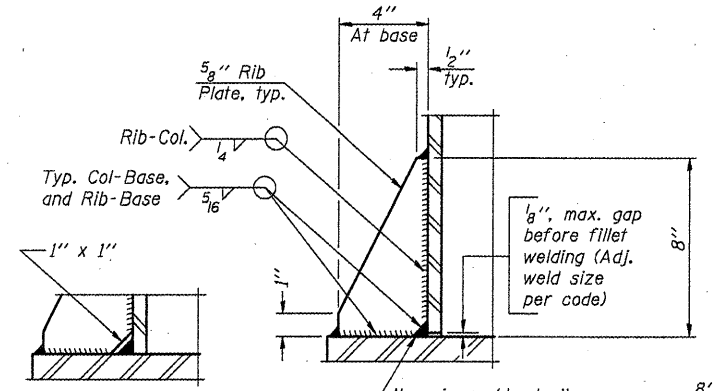


DETAIL B

Ribs shall be cut to fit slope of pipe.
 Stainless Steel Standard Grade Wire Cloth, 3" wide, 1/4" maximum opening with a minimum wire diameter of AWG. No. 16 with a minimum 2" lap. Secure to base plate after erection with 3/4" stainless steel banding.

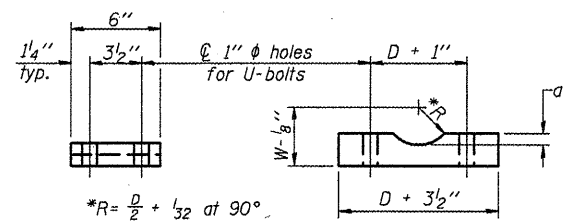


SECTION B-B



SECTION D-D

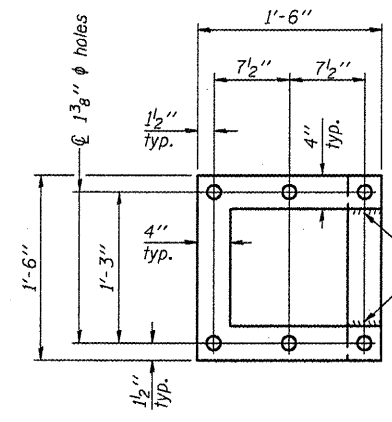
** Alternate detail if welding col. to base plate first, then snip inside corner of ribs. Terminate weld on rib 1/4" from snip.



SADDLE SHIM DETAIL

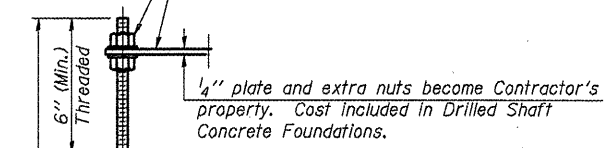
ASTM B26 Alloy 356-F
 or
 ASTM B209 Alloy 6061-T651
 (4 required per sign truss)

Truss Chord Nominal Dia.	a
5"	3 3/4"
5 1/2"	13/16"
6"	7/8"
6 1/2"	15/16"
7"	1"



POSITIONING PLATE(S)

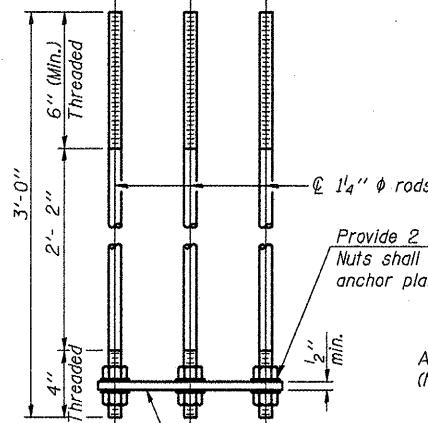
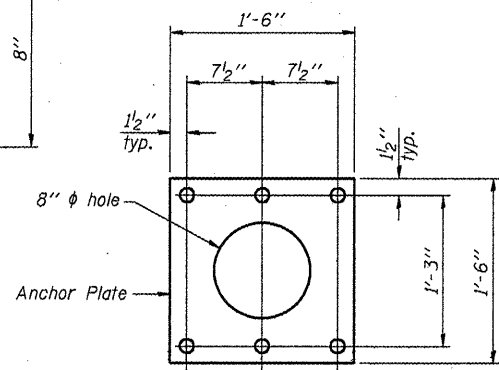
At each location, provide 1/4" thick positioning plate(s) and six (6) additional nuts to be used with leveling nuts to maintain anchor bolts position during concrete placement.



ANCHOR ROD DETAIL
 Drilled Shaft Foundation

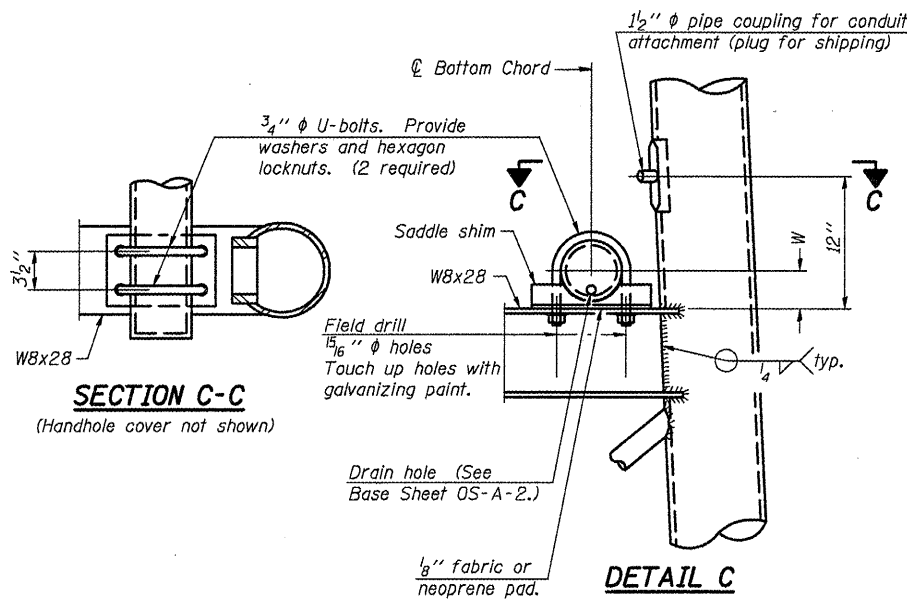
All Thread = NC (National Coarse)

Provide 1 uncoated nut per rod. Deform thread or use chemical thread lock to secure.



ANCHOR ROD DETAIL
 Spread Footing Foundation

All Thread = NC (National Coarse)



SECTION C-C

DETAIL C

10" PIPE SUPPORT FRAME DETAILS

Anchor rods shall conform to AASHTO M314 Grade 36 or 50 and meet Charpy V-Notch (CVN) energy of 15 lb.-ft. at 40° F. Galvanize upper 12" per AASHTO M232. No welding shall be permitted on rods.

OS-A-6A

7-1-10

#D-5 OVD SIN STR REPL 2011-17

FILE NAME =	USER NAME = bucklesj	DESIGNED - JAL	REVISED -
ct:\pw\work\p\dots\bucklesj\d0241273\056140-shd-details.dgn		DRAWN - BBP	REVISED -
PLOT SCALE = 40.0000' / IN.		CHECKED -	REVISED -
PLOT DATE = 10/29/2010		DATE - 09/23/10	REVISED -

STATE OF ILLINOIS
 DEPARTMENT OF TRANSPORTATION

OVERHEAD SIGN STRUCTURES
 SUPPORT FRAME DETAILS - ALUMINUM TRUSS

SCALE:	SHEET NO.	OF SHEETS	STA.	TO STA.
--------	-----------	-----------	------	---------

F.A.I. RTE.	SECTION	COUNTY	TOTAL SHEETS	SHEET NO.
74	.	VERMILION	39	13
CONTRACT NO. 46140			ILLINOIS FED. AID PROJECT	