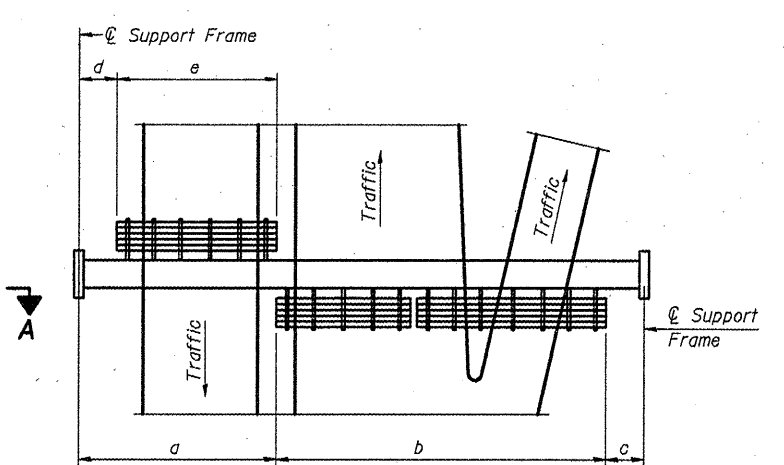


TYPICAL FRONT ELEVATION
With lights and handrail omitted for clarity.
For Section B-B, see Base Sheet OS-A-10.

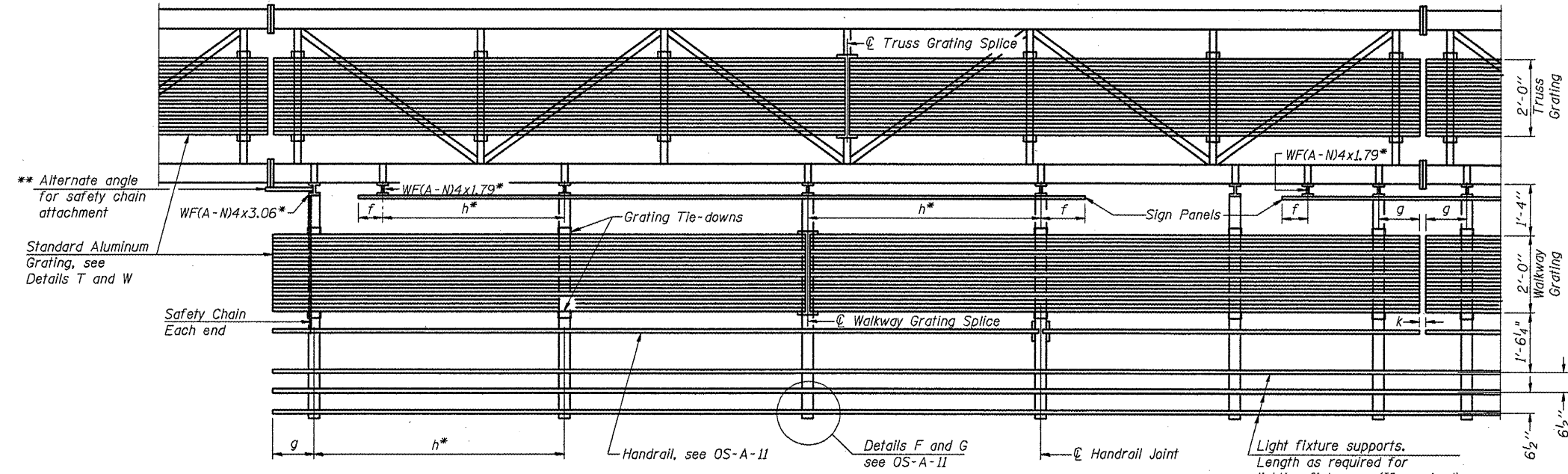


PLAN WALKWAY AND HANDRAIL SKETCH
(Road plan beneath truss varies)

BRACKET TABLE

WF(A-N)4x1.79 or WF(A-N)4x3.06 ASTM B308, Alloy 6061-T6		
Sign Width		Number Brackets Required
Greater Than	Less Than or Equal To	
	8'-0"	2
8'-0"	14'-0"	3
14'-0"	20'-0"	4
20'-0"	26'-0"	5
26'-0"	32'-0"	6

Notes:
* Space walkway brackets WF(A-N)4x3.06 and sign brackets WF(A-N)4x1.79 for efficiency and within limits shown:
f = 12" maximum, 4" minimum (End of sign to center of nearest bracket)
g = 12" maximum, 4" minimum (End of walkway grating to center of nearest support bracket)
h = 6'-0" maximum (center to center of sign and/or walkway support brackets, WF(A-N)4x1.79 or WF(A-N)4x3.06)
k = 2" maximum gap between adjacent walkway grating sections and handrail ends
** If walkway bracket at safety chain location is behind sign, add angle to bracket, see Alternate Safety Chain Attachment on Base Sheet OS-A-11.
For Details T and W, Section B-B and Grating Splice Details see Base Sheet OS-A-10.
For Handrail Details see Base Sheet OS-A-11.



SECTION A-A

Handrail and walkway shall span a minimum of three brackets between splices and/or gap joints. Place all sign and walkway brackets as close to panel points as practical. Handrail joints, grating, and light support splices placed as needed.

Structure Number	Station	a	b	c	d	e	Walkway Grating and Handrail Lengths
5 S 092 1074 R213.03	1860+02	18'-6"	40'-0"	11'-6"			40'-0"
SEE ALSO "SIGN TRUSS MOUNTING DETAILS" - SHEET #6							

Truss grating to facilitate inspection shall run full length (center to center of support frames) ±12" on overhead trusses. Cost of truss grating is included in "Overhead Sign Structure".

Walkway and Truss Grating width dimensions are nominal and may vary ±1/2" based on available standard widths.

OS-A-9

7-1-10

FILE NAME =	USER NAME = bucklesJJ	DESIGNED - JAL	REVISED -
ca:\pwwork\pwwork\bucklesJJ\d0241273\056140-shd-details.dgn		DRAWN - BBP	REVISED -
PLOT SCALE = 48.0000' / IN.		CHECKED -	REVISED -
PLOT DATE = 10/29/2010		DATE - 09/23/10	REVISED -

**STATE OF ILLINOIS
DEPARTMENT OF TRANSPORTATION**

OVERHEAD SIGN STRUCTURES ALUMINUM WALKWAY DETAILS			
SCALE:	SHEET NO.	OF SHEETS	STA. TO STA.

F.A.I. R.T.C.	SECTION	COUNTY	TOTAL SHEETS	SHEET NO.
74		VERMILION	39	14
CONTRACT NO. 46140				
ILLINOIS FED. AID PROJECT				

*D-5 OVD SIN STR REPL 2011-17