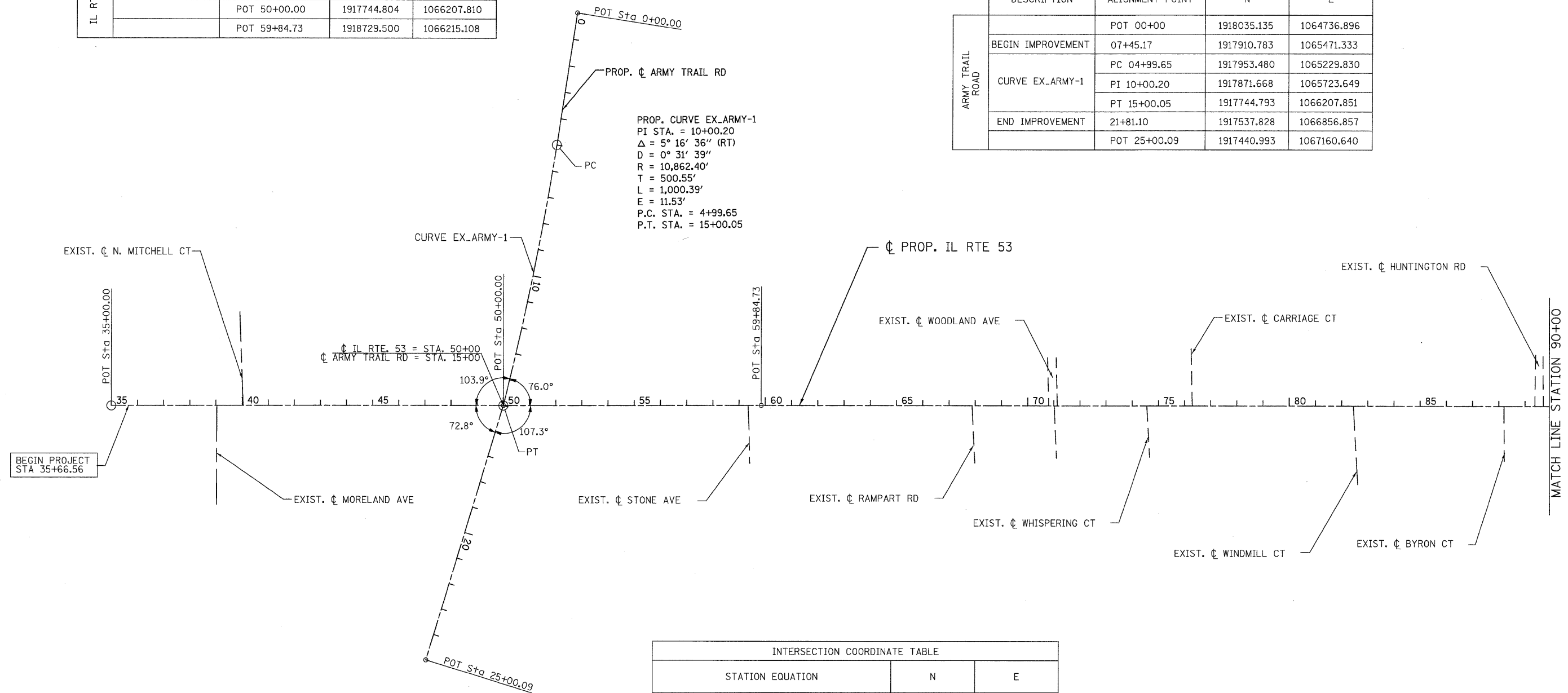


IL RTE 53 COORDINATE TABLE			
	DESCRIPTION	ALIGNMENT POINT	
IL RTE 53		POT 35+00.00	1916244.852
	BEGIN PROJECT	35+66.56	1916285.915
		POT 50+00.00	1917744.804
		POT 59+84.73	1918729.500

SIDE ROAD COORDINATE TABLE				
	DESCRIPTION	ALIGNMENT POINT		
ARMY TRAIL ROAD		POT 00+00	1918035.135	
	BEGIN IMPROVEMENT	07+45.17	1917910.783	
	CURVE EX_ARMY-1	PC	04+99.65	1917953.480
		PI	10+00.20	1917871.668
		PT	15+00.05	1917744.793
	END IMPROVEMENT	21+81.10	1917537.828	
	POT 25+00.09	1917440.993	1067160.640	

PROP. CURVE EX\_ARMY-1  
 PI STA. = 10+00.20  
 $\Delta = 5^\circ 16' 36''$  (RT)  
 $D = 0^\circ 31' 39''$   
 $R = 10,862.40'$   
 $T = 500.55'$   
 $L = 1,000.39'$   
 $E = 11.53'$   
 P.C. STA. = 4+99.65  
 P.T. STA. = 15+00.05



INTERSECTION COORDINATE TABLE		
STATION EQUATION	N	E
CL IL RTE. 53 = STA. 50+00		
CL ARMY TRAIL RD = STA. 15+00	1917744.792	1066207.854

PATRICK ENGINEERING INC. 4970 VARSITY DRIVE LISLE, IL 60532 patrickengineering.com	USER NAME = Rdwj.Lvsle PLOT CONFIG = PDF(Grey_Large).plt PLOT SCALE = 1:200 PLOT DATE = 12/3/2010	DESIGNED - CPK DRAWN - ERC CHECKED - CPK DATE - 12/3/2010	REVISED - REVISED - REVISED - REVISED -	Illinois Department of Transportation	<b>ILLINOIS ROUTE 53 ALIGNMENT PLAN</b>		F.A. RTE. 2578 SECTION 532B COUNTY DUPAGE TOTAL SHEETS 781 SHEET NO. 64
	SCALE: 1"=200' SHEET ALI-01 OF 5 STA. B.O.P. TO STA. 90+00				FED. ROAD DIST. NO. ILLINOIS FED. AID PROJECT CONTRACT NO.		

G:\DOT\9356\_A0\_LL53\Drawings\CADD Sheets\019139797-sht-ATB\_064-067.dgn