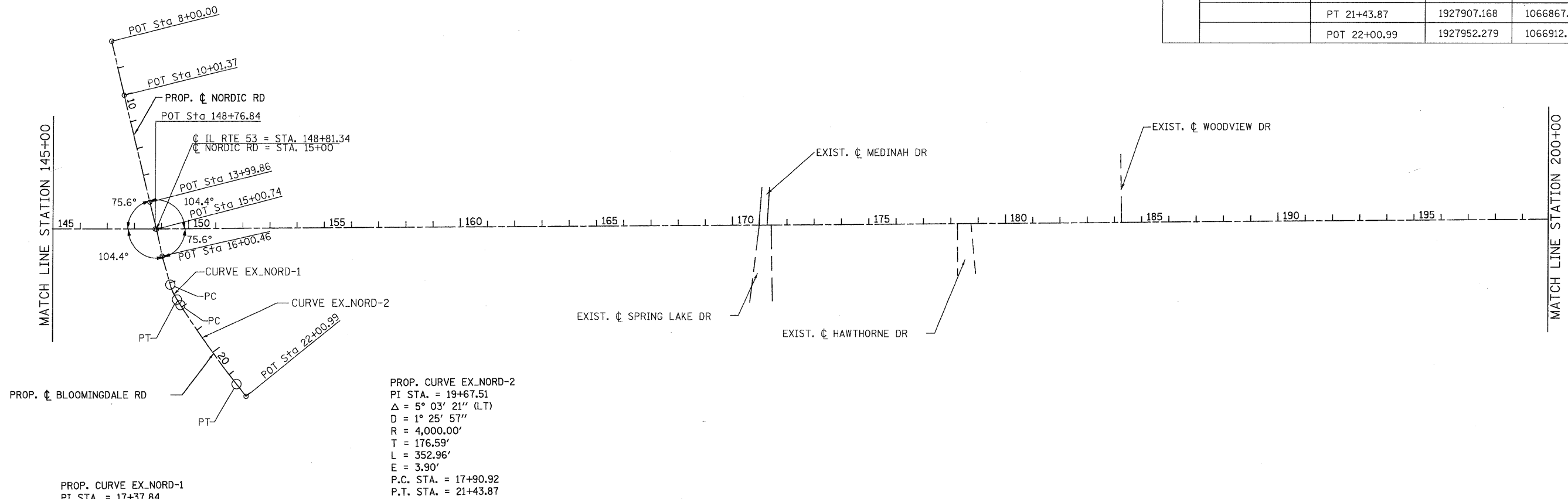


INTERSECTION COORDINATE TABLE		
STATION EQUATION	N	E
CL IL RTE 53 = STA. 148+81.34 CL NORDIC RD = STA. 15+00	1927625.661	1066304.786

SIDE ROAD COORDINATE TABLE				
DESCRIPTION	ALIGNMENT POINT	N	E	
NORDIC RD	POT 08+00	1927463.302	1065623.884	
	BEGIN IMPROVEMENT	08+01.49	1927463.645	1065625.331
	POT 10+01.37	1927508.940	1065820.012	
	POT 13+99.86	1927601.722	1066207.551	
	POT 15+00.74	1927625.842	1066305.502	
	POT 16+00.46	1927646.643	1066403.033	
	PC 17+07.52	1927675.518	1066506.124	
	PI 17+37.84	1927683.702	1066535.321	
	END IMPROVEMENT	17+52.20	1927692.344	1066547.410
	PT 17+67.71	1927700.169	1066560.791	
	PC 17+90.92	1927712.758	1066580.283	
	PI 19+67.51	1927808.623	1066728.586	
	PT 21+43.87	1927907.168	1066867.883	
POT 22+00.99	1927952.279	1066912.938		



PROP. CURVE EX_NORD-1
 PI STA. = 17+37.84
 $\Delta = 17^\circ 14' 38''$ (LT)
 $D = 28^\circ 38' 52''$
 $R = 200.00'$
 $T = 30.33'$
 $L = 60.19'$
 $E = 2.29'$
 P.C. STA. = 17+07.52
 P.T. STA. = 17+67.71

PROP. CURVE EX_NORD-2
 PI STA. = 19+67.51
 $\Delta = 5^\circ 03' 21''$ (LT)
 $D = 1^\circ 25' 57''$
 $R = 4,000.00'$
 $T = 176.59'$
 $L = 352.96'$
 $E = 3.90'$
 P.C. STA. = 17+90.92
 P.T. STA. = 21+43.87

IL RTE 53 COORDINATE TABLE			
DESCRIPTION	ALIGNMENT POINT	N	E
IL RTE 53	POT 101+63.50	1944443.619	1059098.294

G:\NDDT\9356_A0_IL53\Drawings\CADD Sheets\019139797-sh1-ATB_064-067.dgn