

BEGIN PROJECT STA. 35+66.56

RECONSTRUCTION LIMIT O/S = 100.0' RT

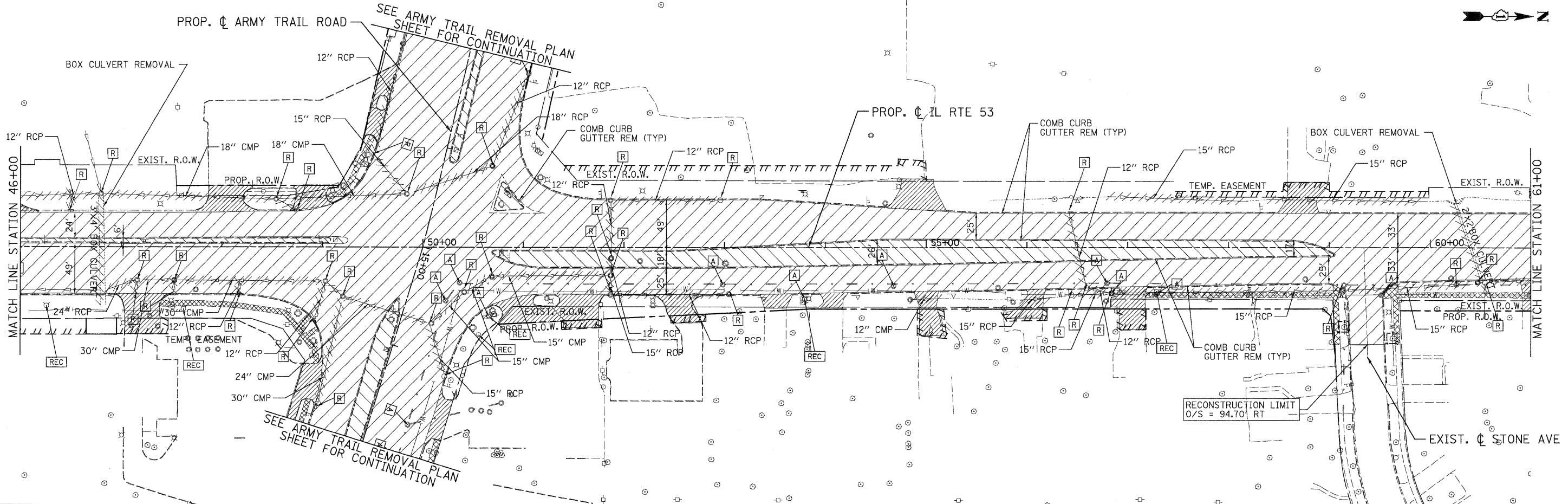
RECONSTRUCTION LIMIT O/S = 97.65' LT

WIDENING AND RESURFACING LIMIT O/S = 129.84' LT

RECONSTRUCTION LIMIT O/S = 79.93' LT

LEGEND:

	STORM SEWER REMOVAL		MEDIAN REMOVAL
	REMOVE STRUCTURE		PAVEMENT REMOVAL
	FRAME AND GRATE/FIRE HYDRANT ADJUSTMENT		DRIVEWAY PAVEMENT REMOVAL
	STRUCTURE TO BE RECONSTRUCTED/FIRE HYDRANT TO BE MOVED		SIDEWALK REMOVAL
	TEMPORARY FENCE		

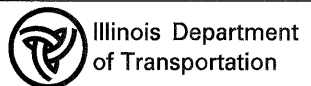


PATRICK ENGINEERING INC.
4970 VARSITY DRIVE
LISLE, IL 60532
patrickengineering.com

USER NAME = Rckw.Lisle
PLOT CONFIG = PDF(Grey_Large).plt
PLOT SCALE = 1:50
PLOT DATE = 12/3/2010

DESIGNED - EJB
DRAWN - EJB
CHECKED - CPK
DATE - 12/3/2010

REVISED -
REVISED -
REVISED -
REVISED -



**ILLINOIS ROUTE 53
REMOVAL PLAN**

SCALE: 1"=50' SHEET REM-01 OF 13 STA. 35+35 TO STA. 61+00

F.A.U. RTE. 2578	SECTION 532B	COUNTY DUPAGE	TOTAL SHEETS 781	SHEET NO. 69
CONTRACT NO.				
FED. ROAD DIST. NO. ILLINOIS FED. AID PROJECT				

G:\1001\9356_A2_IL53\10-arwings\CADD Sheets\019139797-sht-rem01.dgn