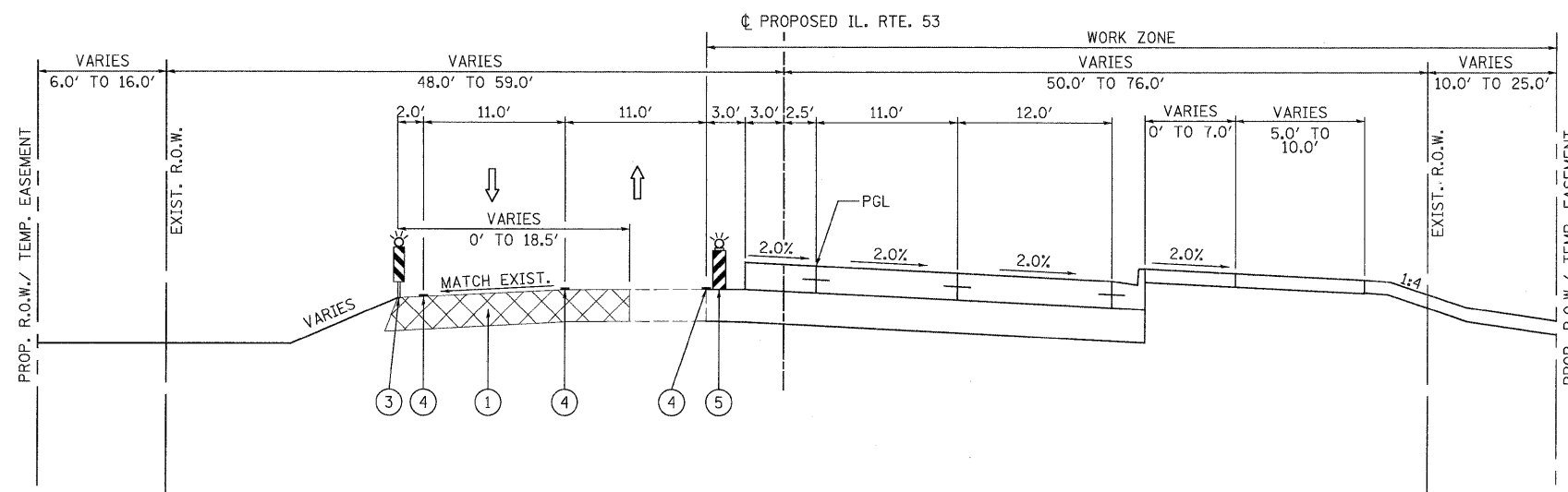


STAGE 1 - PHASE 1
STA. 50+00.00 TO STA. 58+78.73

LEGEND

- ① TEMPORARY PAVEMENT (SEE SPECIAL PROVISION)
- ② TYPE II BARRICADES WITH STEADY BURNING LIGHTS (50 FT C-C TANGENTS, 25 FT C-C @ TAPERS & 12 FT C-C ALONG RADII)
- ③ VERTICAL PANELS WITH STEADY BURNING LIGHTS @ 50 FT C-C
- ④ TEMPORARY PAVEMENT MARKING
- ⑤ VERTICAL BARRICADES WITH STEADY BURNING LIGHTS (50 FT C-C @ TANGENTS, 25 FT C-C @ TAPERS & 12 FT C-C ALONG RADII)



STAGE 1 - PHASE 1
STA. 58+78.73 TO STA. 103+79.28

NOTE:
CONSTRUCT TEMPORARY PAVEMENT FOR USE IN STAGE 2

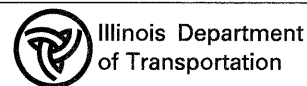


PATRICK ENGINEERING INC.
4970 VARSITY DRIVE
LISLE, IL 60532
patrickengineering.com

USER NAME = ckersten@lisle_r
PLOT CONFIG = PDF0reg_Large.plt
PLOT SCALE = 1:6.66667
PLOT DATE = 12/3/2010

DESIGNED - MJV
DRAWN - EJB
CHECKED - CPK
DATE - 12/3/2010

REVISED -
REVISED -
REVISED -
REVISED -



ILLINOIS ROUTE 53
SUGGESTED MAINTENANCE OF TRAFFIC
TYPICAL SECTIONS - STAGE 1 PHASE 1

| F.A. RTE. | SECTION | COUNTY | TOTAL SHEETS | SHEET NO. |
|--------------------|---------|--------|--------------|-----------|
| 2578 | 532B | DUPAGE | 781 | 111 |
| CONTRACT NO. 60477 | | | | |

SCALE: 1"=50' SHEET MOT-05 OF 136 STA. TO STA.

FED. ROAD DIST. NO. ILLINOIS FED. AID PROJECT