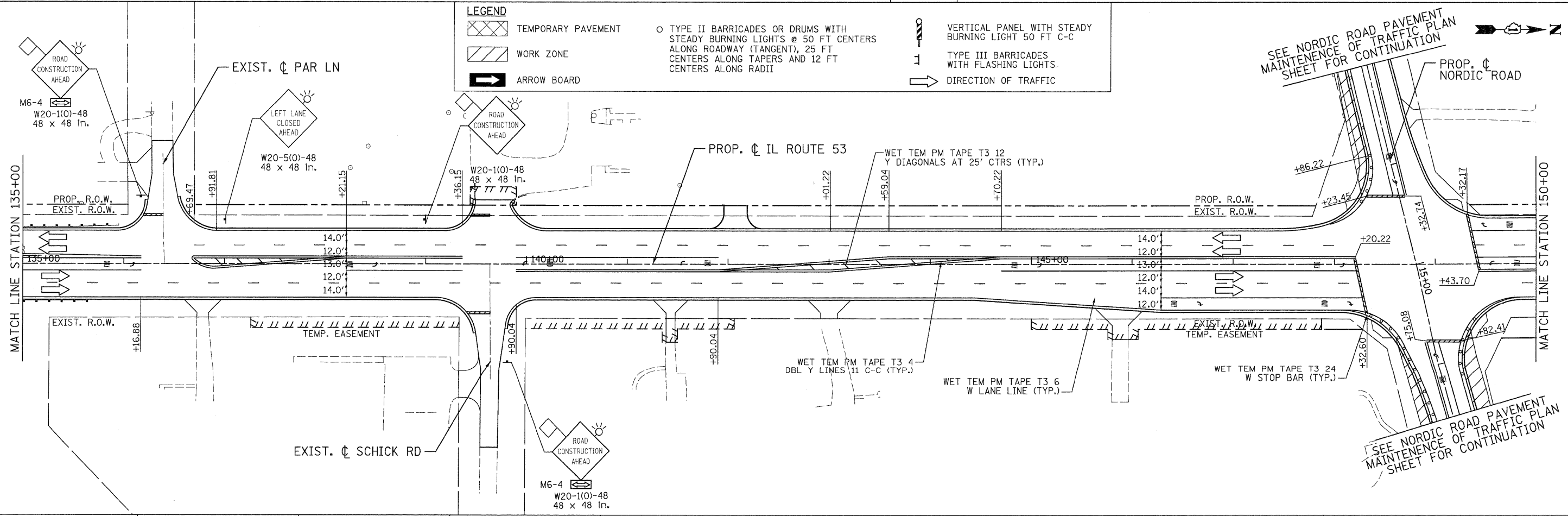


**LEGEND**

- TEMPORARY PAVEMENT
- WORK ZONE
- ARROW BOARD
- TYPE II BARRICADES OR DRUMS WITH STEADY BURNING LIGHTS @ 50 FT CENTERS ALONG ROADWAY (TANGENT), 25 FT CENTERS ALONG TAPERS AND 12 FT CENTERS ALONG RADII
- VERTICAL PANEL WITH STEADY BURNING LIGHT 50 FT C-C
- TYPE III BARRICADES WITH FLASHING LIGHTS
- DIRECTION OF TRAFFIC



PATRICK ENGINEERING INC. 4970 VARSITY DRIVE LISLE, IL 60532 patrickengineering.com	USER NAME = ckersten@lisle-ri	DESIGNED - MJV	REVISED -	Illinois Department of Transportation	<b>ILLINOIS ROUTE 53</b> <b>SUGGESTED STAGES OF CONSTRUCTION &amp; TRAFFIC CONTROL</b> <b>STAGE 3 PHASE 1</b>		F.A.U. RTE. = 2578	SECTION = 532B	COUNTY = DUPAGE	TOTAL SHEETS = 781	SHEET NO. = 203		
	PLOT CONFIG = PDFtoGrey_Large.plt	DRAWN - MJV	REVISED -		SCALE: 1"=50'	SHEET = MOT-97 OF 136	STA. 121+00 TO STA. 150+00	FED. ROAD DIST. NO. = ILLINOIS	FED. AID PROJECT =	CONTRACT NO. 60477			
	PLOT SCALE = 1:168	CHECKED - JJC	REVISED -										
	PLOT DATE = 12/3/2010	DATE = 12/3/2010	REVISED -										

G:\1001\9356\_A2\_IL(53)\Drawings\CADD\_Sheets\01913977-shit-staging\_203.dgn