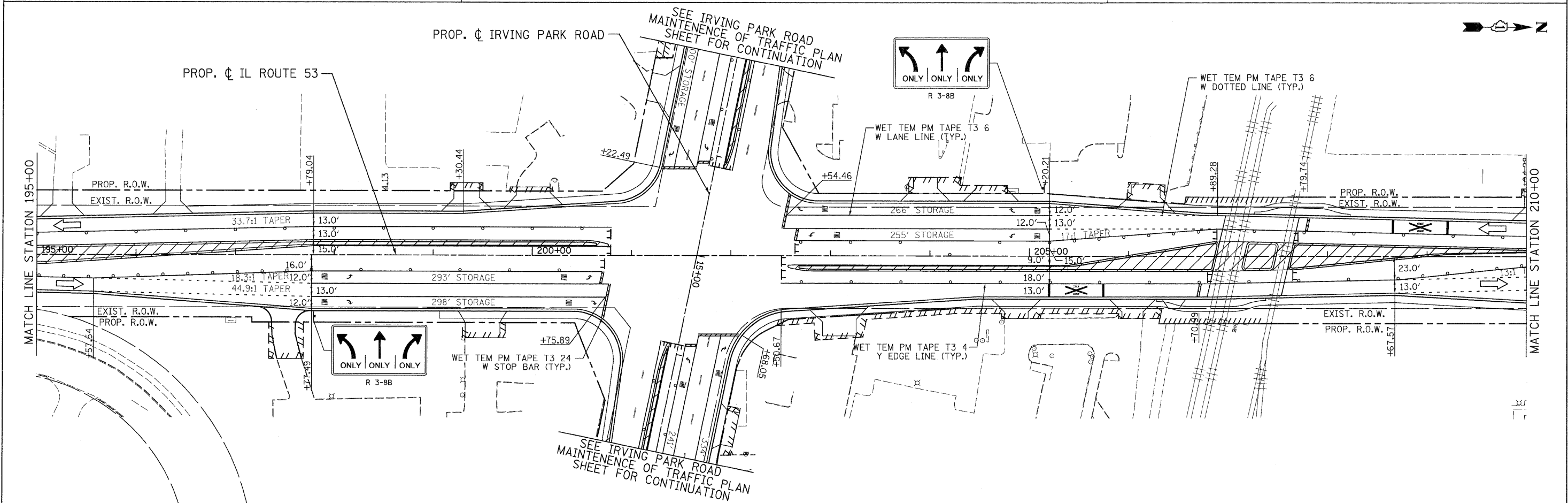


LEGEND

| | | | | | |
|--|--------------------|--|--|--|--|
| | TEMPORARY PAVEMENT | | TYPE II BARRICADES OR DRUMS WITH STEADY BURNING LIGHTS @ 50 FT CENTERS ALONG ROADWAY (TANGENT), 25 FT CENTERS ALONG TAPERS AND 12 FT CENTERS ALONG RADII | | VERTICAL PANEL WITH STEADY BURNING LIGHT 50 FT C-C |
| | WORK ZONE | | TYPE III BARRICADES WITH FLASHING LIGHTS | | DIRECTION OF TRAFFIC |
| | ARROW BOARD | | | | |



| | | | | | | | | | | | |
|---|------------------------------------|----------------|-----------|---------------------------------------|---|----------------------------|---|--------------------|--------|------------------|---------------|
| PATRICK ENGINEERING INC. 4970 VARSITY DRIVE LISLE, IL 60532 patrickengineering.com | USER NAME = ckersten(Lisle,RI) | DESIGNED - MJV | REVISED - | Illinois Department of Transportation | ILLINOIS ROUTE 53 SUGGESTED STAGES OF CONSTRUCTION & TRAFFIC CONTROL STAGE 3 PHASE 2 | | F.A.U. RTE. 2578 | SECTION 532B | COUNTY | TOTAL SHEETS 781 | SHEET NO. 237 |
| | PLOT CONFIG = PDF(Greg, Large).plt | DRAWN - MJV | REVISED - | | | | DUPAGE | CONTRACT NO. 60477 | | | |
| PLOT SCALE = 1:50 | CHECKED - JJC | REVISIED - | | SCALE: 1"=50' | SHEET MOT-131 OF 136 | STA. 180+00 TO STA. 210+00 | FED. ROAD DIST. NO. ILLINOIS FED. AID PROJECT | | | | |
| PLOT DATE = 12/3/2010 | DATE - 12/3/2010 | REVISED - | | | | | | | | | |

G:\IDOT\9356_A8_IL53\Drawings\CADD Sheets\019139797-sht-staging_237.dgn