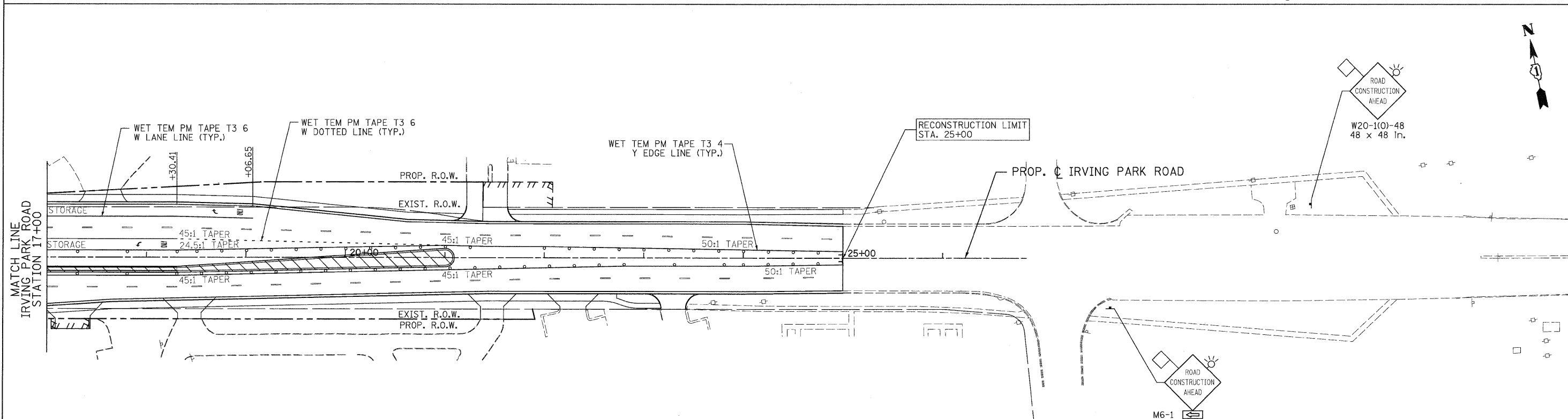
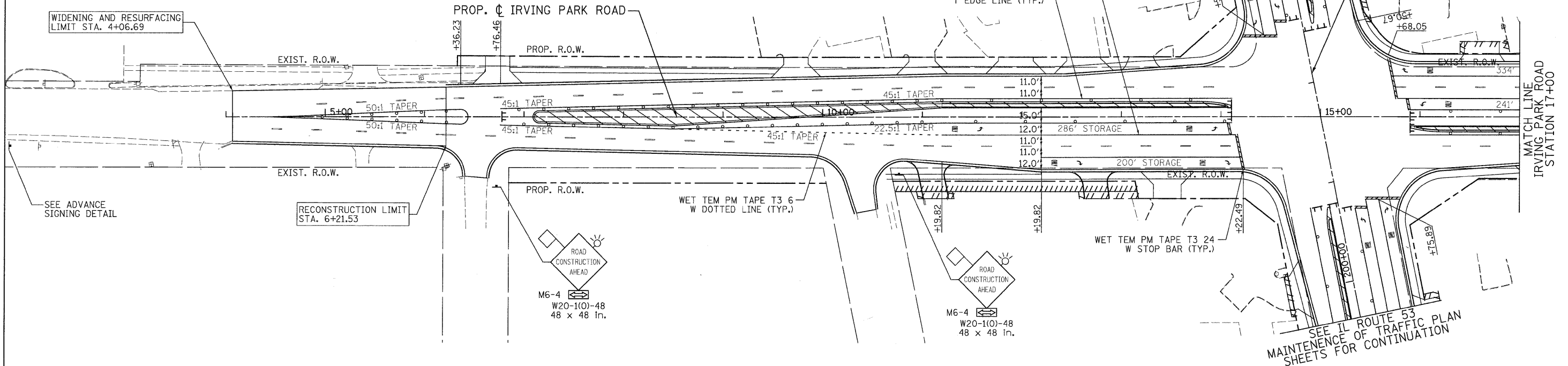
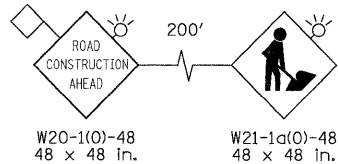


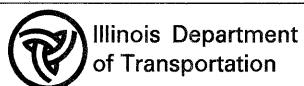
ADVANCE SIGNING DETAIL:



**LEGEND**

TEMPORARY PAVEMENT	TYPE II BARRICADES OR DRUMS WITH STEADY BURNING LIGHTS @ 50 FT CENTERS ALONG ROADWAY (TANGENT), 25 FT CENTERS ALONG TAPERS AND 12 FT CENTERS ALONG RADII	VERTICAL PANEL WITH STEADY BURNING LIGHT 50 FT C-C
WORK ZONE	TYPE III BARRICADES WITH FLASHING LIGHTS	DIRECTION OF TRAFFIC
ARROW BOARD		

PATRICK ENGINEERING INC. 4970 VARSITY DRIVE LISLE, IL 60532 patrickengineering.com	USER NAME = ckersten(Lisle_R)	DESIGNED - MJV	REVISED -
	PLOT CONFIG = PDF(Grey-Large).plt	DRAWN - MJV	REVISED -
	PLOT SCALE = 1:50	CHECKED - JJC	REVISED -
	PLOT DATE = 12/3/2010	DATE - 12/3/2010	REVISED -



**IRVING PARK ROAD  
SUGGESTED STAGES OF CONSTRUCTION & TRAFFIC CONTROL  
STAGE 3 PHASE 2**

SCALE: 1"=50' SHEET MOT-134 OF 136 STA. 4+44.45 TO STA. 24+45.00

F.A. RTE.	SECTION	COUNTY	TOTAL SHEETS	SHEET NO.
2578	532B	DUPAGE	781	240
FED. ROAD DIST. NO. ILLINOIS FED. AID PROJECT			CONTRACT NO. 60477	

G:\1001\9356\_A0\_11.53\Drawings\CADD Sheets\10139797-ah- staging\_240.dgn