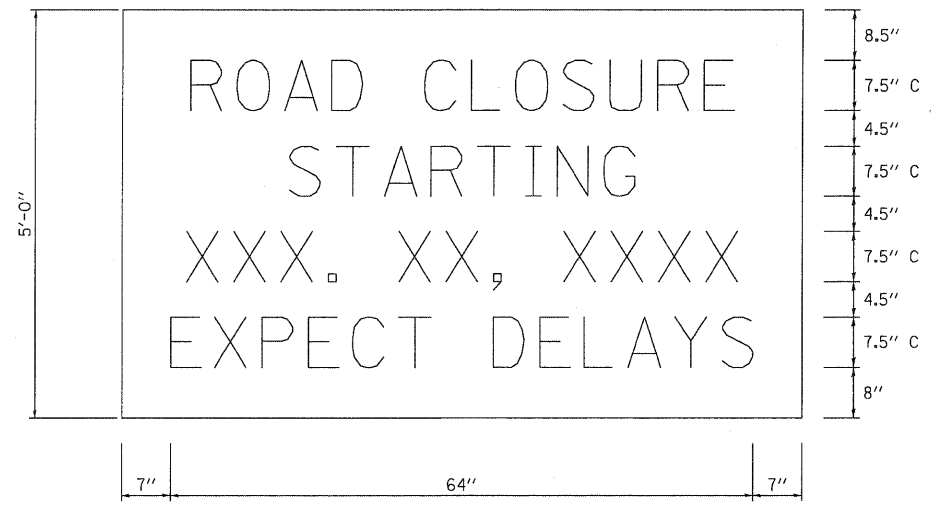
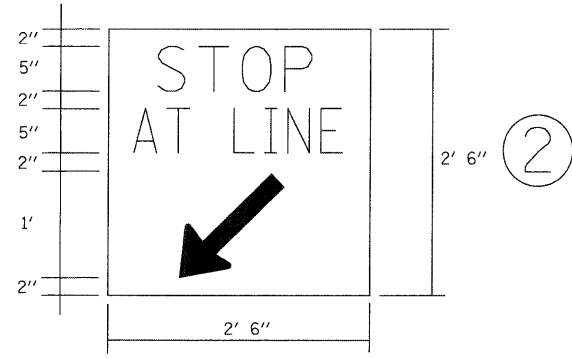
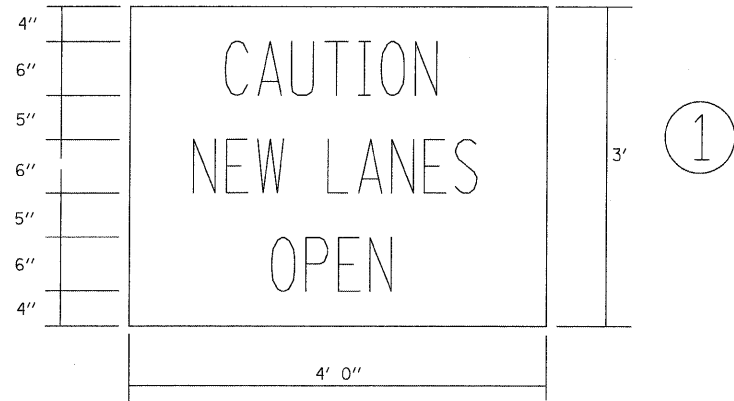


AT ENDS OF PROJECT

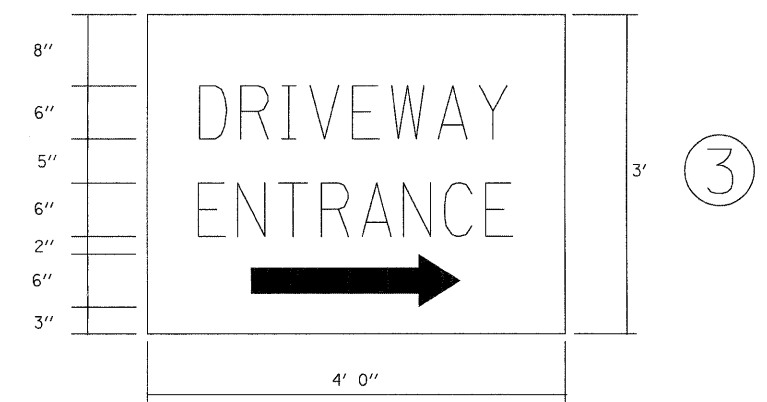


TEMPORARY INFORMATION SIGNING (BM-19)



AT SIDE ROADS  
(MOUNTED SEPARATELY)

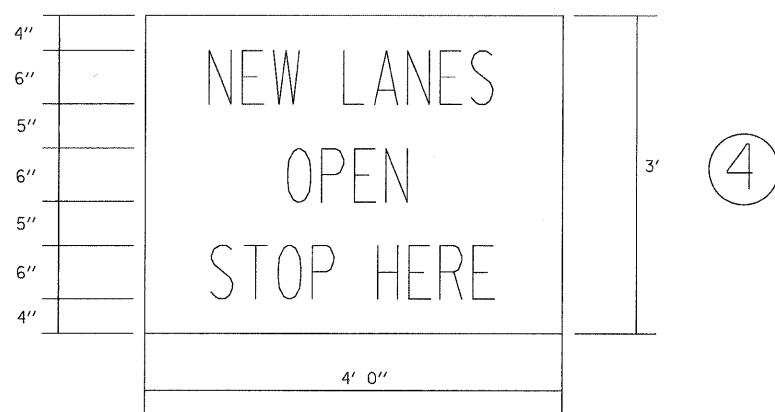
NOTE:  
ABOVE SIGN SHALL BE BLACK ON ORANGE  
REFLECTIVE BACKGROUND



AT COMMERCIAL ENTRANCES

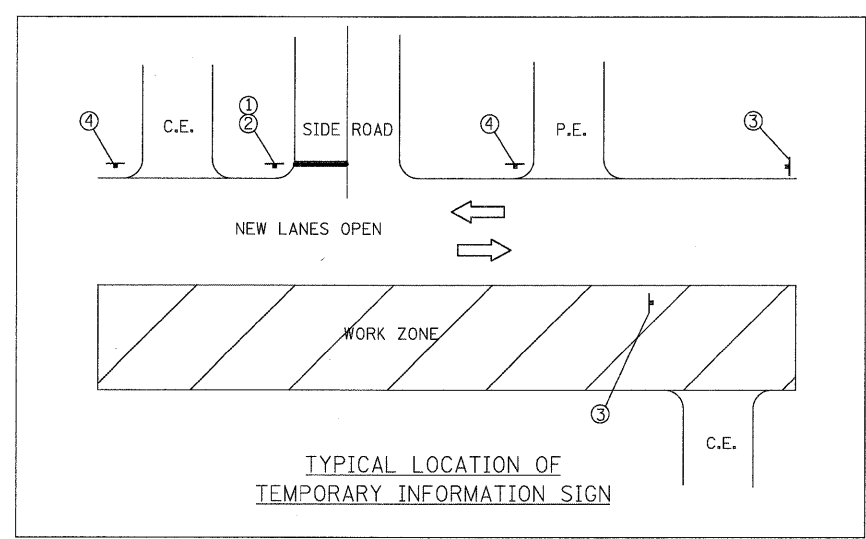
NOTE:  
SIGN SHALL BE GREEN ON WHITE REFLECTIVE  
BACKGROUND WITH .50 in. BORDER.  
TWO SIGNS SHALL BE USED AT EACH COMMERCIAL  
DRIVEWAY AS DIRECTED BY THE ENGINEER.  
HALF OF THE SIGNS SHALL REQUIRE THE ARROW  
TO POINT TO THE LEFT AND THE OTHER HALF  
TO THE RIGHT (AS SHOWN).

SEE SPECIAL PROVISION FOR "TEMPORARY  
INFORMATION SIGNS" FOR ADDITIONAL INFORMATION.  
ALL DIMENSIONS ARE IN FEET  
UNLESS OTHERWISE SHOWN.



AT ENTRANCES

NOTE:  
ABOVE SIGNS SHALL BE BLACK ON ORANGE  
REFLECTIVE BACKGROUND



TYPICAL LOCATION OF  
TEMPORARY INFORMATION SIGN



USER NAME = ckerster(Lisle.R)  
PLOT CONFIG = PDF(Greg.L)regl.plt  
PLOT SCALE = 1:500  
PLOT DATE = 12/3/2010

DESIGNED - MJV  
DRAWN - MJV  
CHECKED - CPK  
DATE - 12/3/2010

REVISED -  
REVISED -  
REVISED -  
REVISED -



MCHENRY COUNTY  
DIVISION OF TRANSPORTATION

ILLINOIS ROUTE 53  
MAINTENANCE OF TRAFFIC  
TEMPORARY SIGNING DETAIL

SCALE: N/A SHEET NO. MOT-135 OF 136 STA. TO STA.

F.A.P. RTE.	SECTION	COUNTY	TOTAL SHEETS	SHEET NO.
2578	532B	DUPAGE	781	241
FED. ROAD DIST. NO.			ILLINOIS FED. AID PROJECT	
			CONTRACT NO. 60477	