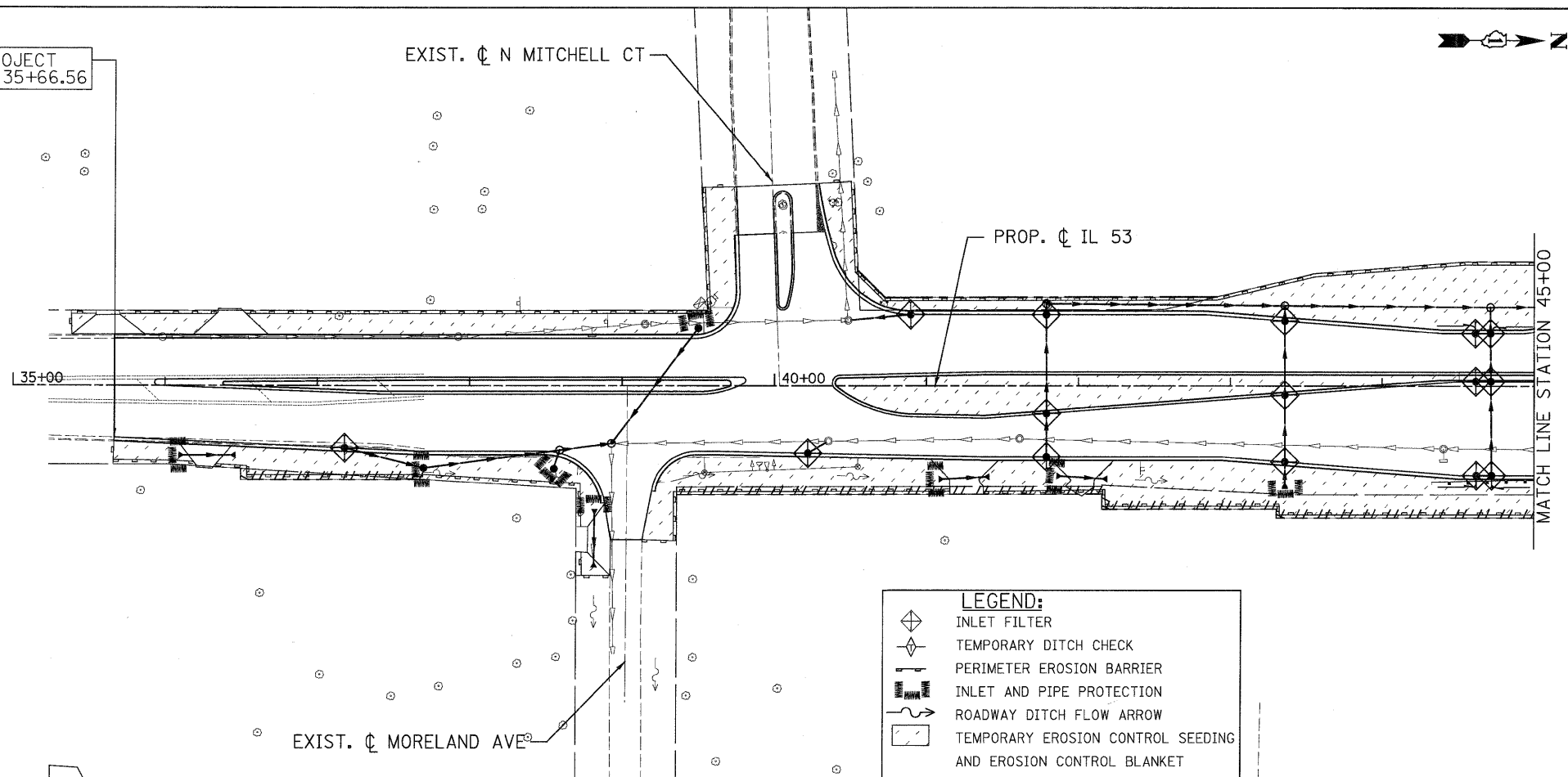


EROSION CONTROL GENERAL NOTES:

1. THE CONSTRUCTION LIMIT WILL BE STAKED/APPROVED BY THE ENGINEER PRIOR TO COMMENCING CONSTRUCTION. THE CONSTRUCTION LIMITS MAY BE ADJUSTED BY THE ENGINEER TO PRESERVE TREES AND NO ADDITIONAL COMPENSATION WILL BE PAID TO THE CONTRACTOR FOR CHANGES IN THE CONSTRUCTION LIMITS.
2. EROSION CONTROL ITEMS ARE CONSIDERED TO BE HIGH PRIORITY ITEMS ON THIS CONTRACT. THE ENGINEER WILL IMPLEMENT ALL PROVISIONS OF THE SPECIFICATION NECESSARY TO ASSURE THAT EROSION CONTROL ITEMS ARE CONSTRUCTED AND MAINTAINED IN A TIMELY WAY. ALL EROSION CONTROL MEASURES SHALL BE INSTALLED PRIOR TO BEGINNING ANY CONSTRUCTION ACTIVITIES WHICH WILL POTENTIALLY CREATE ERODABLE CONDITIONS.
3. THE EROSION CONTROL MEASURES SHOWN ARE BUT A GRAPHICAL REPRESENTATION OF SUGGESTED MEASURES. DEVIATIONS FROM THIS PLAN ARE TO BE EXPECTED PENDING A JOBSITE INSPECTION BETWEEN THE CONTRACTOR AND THE DEPARTMENT.
4. THE CONTRACTOR WILL BE REQUIRED TO IMPLEMENT AND MAINTAIN SEDIMENT CONTROL MEASURES PRIOR TO STRIPPING EXISTING VEGETATION.
5. TEMPORARY EROSION CONTROL SEEDING SHALL BE PROVIDED PER SUB-STAGE AS SOON AS ROUGH GRADING IS COMPLETED IN A SECTION.
6. ANY AREA WHERE THERE IS NO PROPOSED GRADING THE EXISTING GROUND COVER SHALL REMAIN.
7. THE CONTRACTOR SHALL PROVIDE TO THE RESIDENT ENGINEER A PLAN TO HAVE A STABILIZED CONNECTION BETWEEN UPSTREAM AND DOWNSTREAM ENDS OF STORM SEWERS UNDER CONSTRUCTION WHEN RAIN IS FORECASTED DURING STORM SEWER CONSTRUCTION, SO THAT FLOW WILL NOT CAUSE EROSION.

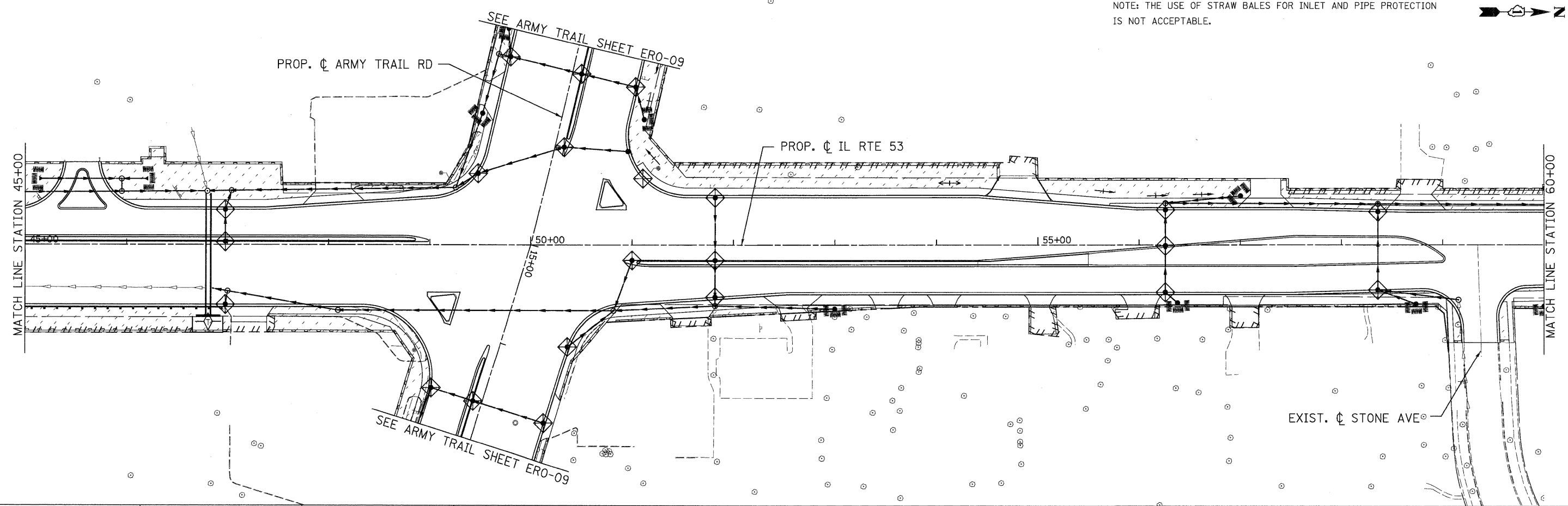
BEGIN PROJECT
STATION 35+66.56



LEGEND:

- INLET FILTER
- TEMPORARY DITCH CHECK
- PERIMETER EROSION BARRIER
- INLET AND PIPE PROTECTION
- ROADWAY DITCH FLOW ARROW
- TEMPORARY EROSION CONTROL SEEDING AND EROSION CONTROL BLANKET

NOTE: THE USE OF STRAW BALES FOR INLET AND PIPE PROTECTION IS NOT ACCEPTABLE.



PATRICK ENGINEERING INC. 4970 VARSITY DRIVE LISLE, IL 60532 patrickengineering.com	USER NAME = akersten(Lisle.R)	DESIGNED - J. MACKE	REVISED -	Illinois Department of Transportation	ILLINOIS ROUTE 53 SOIL EROSION AND SEDIMENT CONTROL PLAN		F.A.U. RTE. 2578	SECTION 532B	COUNTY DUPAGE	TOTAL SHEETS 781	SHEET NO. 243	
	PLOT CONFIG = PDF(Grey-Large).plt	DRAWN - J. MACKE	REVISED -		SCALE: 1"=50'	SHEET ERO-01 OF 13	STA. 35+66.56 TO STA. 60+00	FED. ROAD DIST. NO.	ILLINOIS	FED. AID PROJECT	CONTRACT NO. 60477	
	PLOT SCALE = 1:50	CHECKED - D. DOERFLER	REVISED -									
	PLOT DATE = 12/3/2010	DATE - 12/3/2010	REVISED -									

G:\1001\9356_A2(IL53)\Drawings\CADD Sheets\019139797-sht-eros.243.dgn