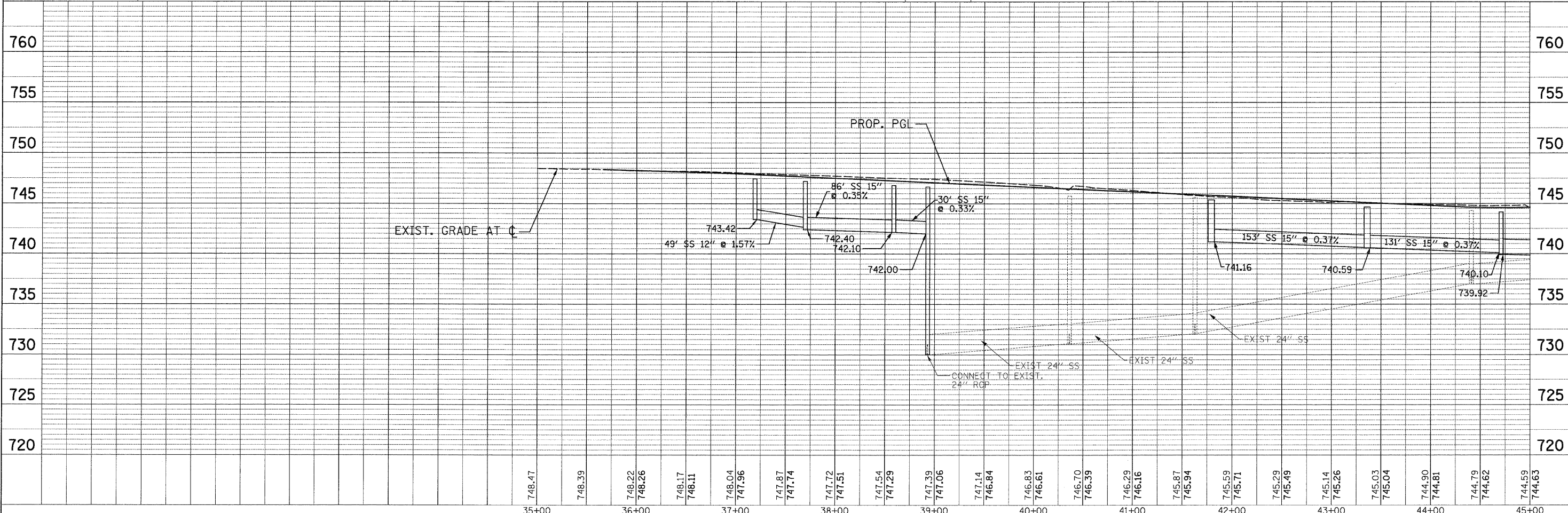
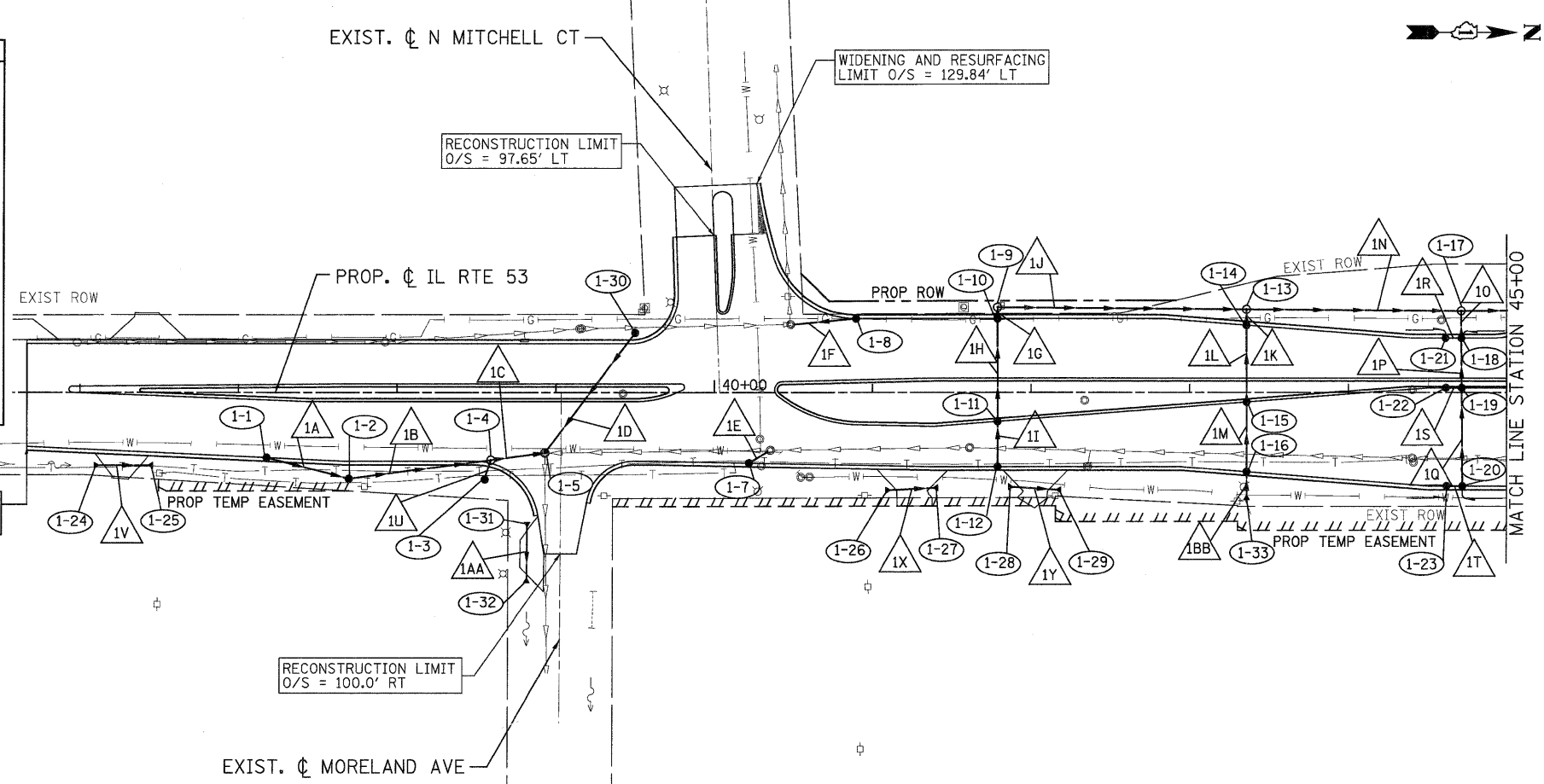


LEGEND:

BOUNDARY LINES/SYMBOLS	EXISTING	PROPOSED	BOUNDARY LINES/SYMBOLS	EXISTING	PROPOSED
REFERENCE LINE/CENTERLINE AND STATIONING	—+0+00	—+0+00	MANHOLE	○	⊙
STORM SEWER	—	—	FLARED END SECTION	△	▲
CATCH BASIN	○	●	RIGHT OF WAY LINE	—	—
HEADWALL/ENDWALL	⌋	⌋	TEMPORARY EASEMENT	///	///
OPEN LID MANHOLE/INLET	□	□	PERMANENT EASEMENT	////	////
SWALE	—	—	DITCH	—	—
DETENTION HIGH WATER LEVEL (HWL)	—	—	RIPRAP	■	■
STORM SEWER REMOVAL	—	—	DITCH CHECK	—	—
STRUCTURE REMOVAL	—	—	GAS LINE	—G—	—G—
STRUCTURE RECONSTRUCTION	—	—	TELEPHONE LINE	—T—	—T—
STRUCTURE ADJUSTMENT	—	—	AERIAL LINE	—A—	—A—
GUTTER OUTLET	—	—	SANITARY SEWER	—S—	—S—
WETLAND	—	—	CABLE TELEVISION	—CTV—	—CTV—
			WATER MAIN	—W—	—W—
			PIPE UNDERDRAIN	—	—

PLAN	DATE
BY	
REVIEWED	
PLOTTED	
ALIGNED	
CHECKED	
NO. _____	
NOTE BOOK	
NO. _____	
STRUCTURE	
NOTATIONS	
CHKD	

PROFILE	DATE
BY	
REVIEWED	
PLOTTED	
ALIGNED	
CHECKED	
NO. _____	
NOTE BOOK	
NO. _____	
STRUCTURE	
NOTATIONS	
CHKD	



<p>PATRICK ENGINEERING INC. 4970 VARSITY DRIVE LISLE, IL 60532 patrickengineering.com</p>	USER NAME = akersten(Lisle,IL) PLOT CONFIG = PDF(Grey, Large).plt PLOT SCALE = 1:50 PLOT DATE = 12/3/2010 1:05:03 PM	DESIGNED - D.DOERFLER DRAWN - D.DOERFLER CHECKED - A.JAMES DATE - 12/3/2010	REVISED - REVISED - REVISED - REVISED -	<p>Illinois Department of Transportation</p>	ILLINOIS ROUTE 53 DRAINAGE AND UTILITIES PLAN AND PROFILE			F.A.U. RTE. 2578 SECTION 532B COUNTY TOTAL SHEETS 781 SHEET NO. 264 CONTRACT NO. 60477
	SCALE: 1"=50' SHEET NO. DRA-09 OF 36 STA. 35+66.56 TO STA. 45+00				FED. ROAD DIST. NO. ILLINOIS FED. AID PROJECT			

G:\1001\9356.A0\1153\Drawings\CADD Sheets\019139797-sht-drain_264.dgn