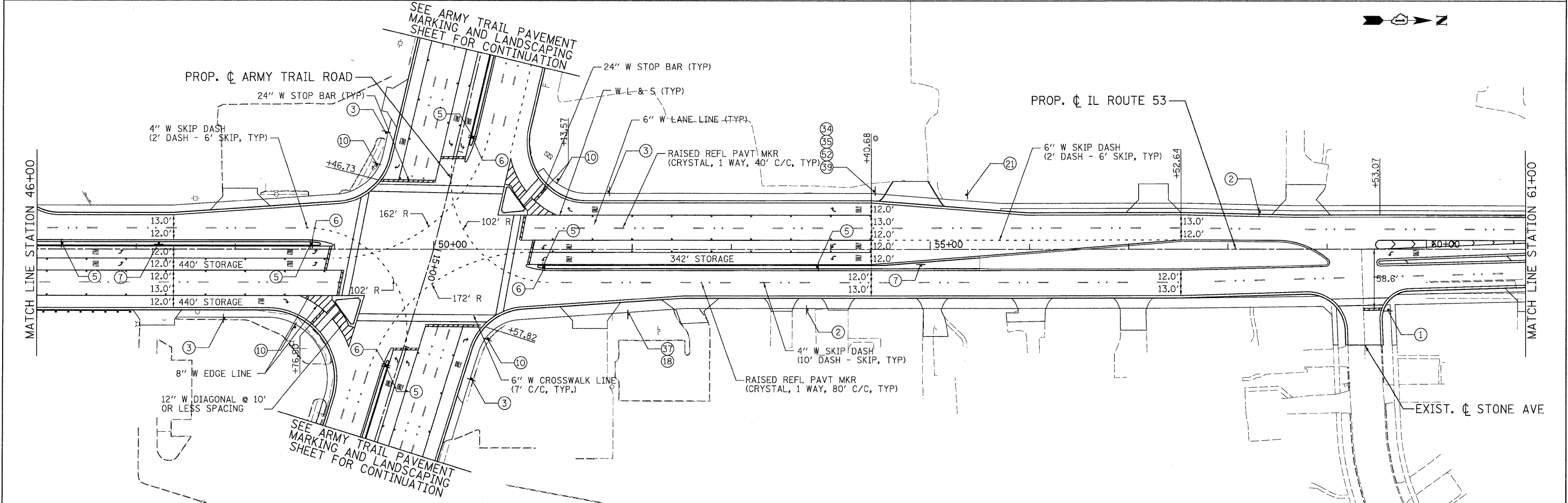


**STRIPING NOTE:**

1. FINAL PAVEMENT MARKING ON CONCRETE PAVEMENT SHALL BE POLYUREA PAVEMENT MARKING.
2. FINAL PAVEMENT MARKING ON HMA PAVEMENT SURFACE SHALL BE THERMOPLASTIC PAVEMENT MARKING.
3. THE CONTRACTOR SHALL CONTACT DON CHIARUGI AT 847-741-9857 TWO WEEKS PRIOR TO INSTALLING FINAL PAVEMENT MARKINGS.



**PATRICK ENGINEERING INC.**  
 4870 VARSITY DRIVE  
 LISLE, IL 60532  
 patrickengineering.com

USER NAME = Rdey\_L1210  
 PLOT CONFIG = PDF16reg\_Large.plt  
 PLOT SCALE = 1:50  
 PLOT DATE = 12/3/2010

DESIGNED - EJB  
 DRAWN - EJB  
 CHECKED - CPK  
 DATE - 12/3/2010

REVISED -  
 REVISED -  
 REVISED -  
 REVISED -



**ILLINOIS ROUTE 53  
 PAVEMENT MARKING & SIGNING PLAN**

SCALE: 1"=50' SHEET PMK-02 OF 14 STA. 35+35 TO STA. 61+00

F.A.U. RTE.	SECTION	COUNTY	TOTAL SHEETS	SHEET NO.
2578	532B	DUPAGE	781	323
CONTRACT NO. 60477				
FED. ROAD DIST. NO. [ILLINOIS] FED. AID PROJECT				

G:\1001\9356\_A2 (11.53)\Drawings\CADD Sheets\1019139797-sht-pmk\_323.dgn