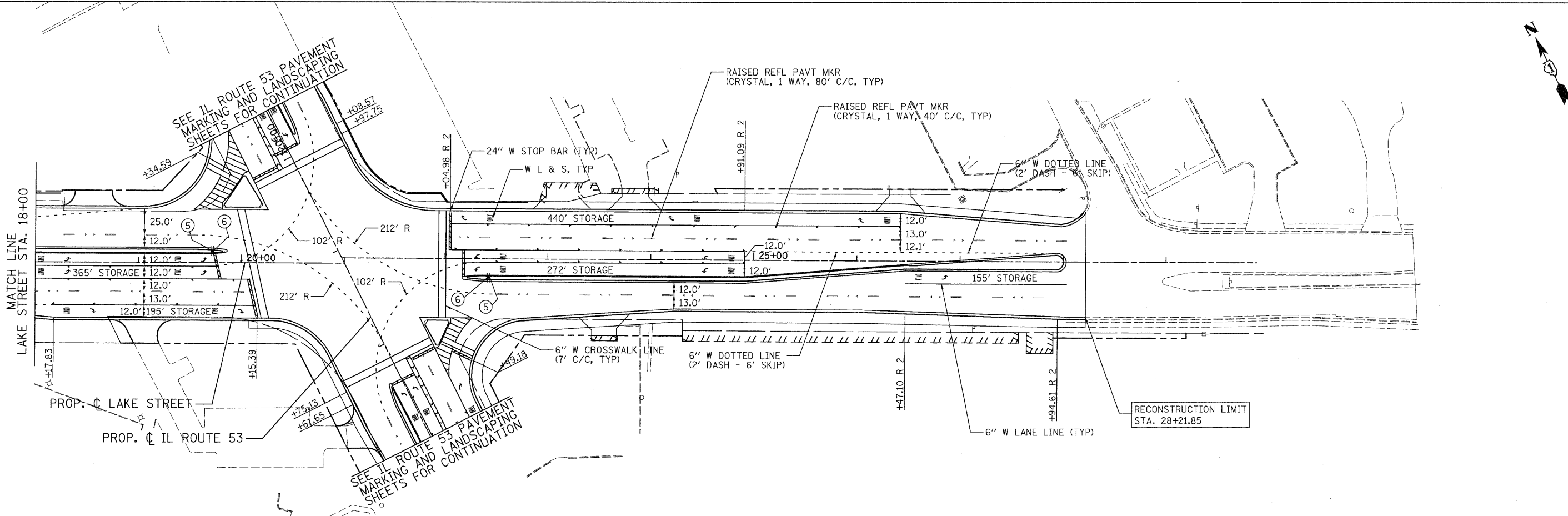


- NOTE:
1. FINAL PAVEMENT MARKING ON CONCRETE PAVEMENT SHALL BE POLYUREA PAVEMENT MARKING.
 2. FINAL PAVEMENT MARKING ON HMA PAVEMENT SURFACE SHALL BE THERMOPLASTIC PAVEMENT MARKING.
 3. THE CONTRACTOR SHALL CONTACT DON CHIARUGI AT 847-741-9857 TWO WEEKS PRIOR TO INSTALLING FINAL PAVEMENT MARKINGS.

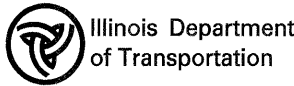


PATRICK ENGINEERING INC.
 4970 VARSITY DRIVE
 LISLE, IL 60532
 patrickengineering.com

USER NAME = Rdwy_Lisle
 PLOT CONFIG = PDF(Grey_Large).plt
 PLOT SCALE = 1:50
 PLOT DATE = 12/3/2010

DESIGNED - EJB
 DRAWN - EJB
 CHECKED - CPK
 DATE - 12/3/2010

REVISED -
 REVISED -
 REVISED -
 REVISED -



**LAKE STREET
 PAVEMENT MARKING & SIGNING PLAN**

SCALE: 1"=50' SHEET PMK-11 OF 14 STA. TO STA.

F.A. RTE.	SECTION	COUNTY	TOTAL SHEETS	SHEET NO.
2578	532B	DUPAGE	781	332
CONTRACT NO. 60477				
FED. ROAD DIST. NO. ILLINOIS FED. AID PROJECT				

G:\IDOT\9356_A01(11.53)\Dr-wings\CADD Sheets\019139797-ht-pmk_332.dgn