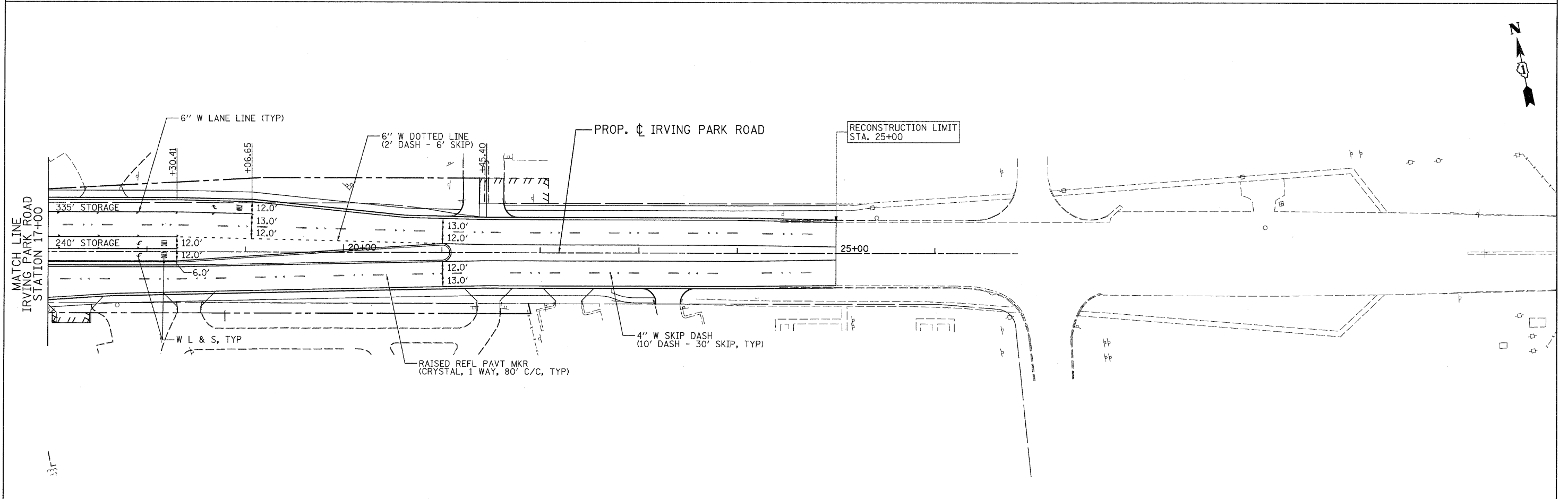


- NOTE:
1. FINAL PAVEMENT MARKING ON CONCRETE PAVEMENT SHALL BE POLYUREA PAVEMENT MARKING.
  2. FINAL PAVEMENT MARKING ON HMA PAVEMENT SURFACE SHALL BE THERMOPLASTIC PAVEMENT MARKING.
  3. THE CONTRACTOR SHALL CONTACT DON CHIARUGI AT 847-741-9857 TWO WEEKS PRIOR TO INSTALLING FINAL PAVEMENT MARKINGS.



PATRICK ENGINEERING INC. 4970 VARSITY DRIVE LISLE, IL 60532 patrickengineering.com	USER NAME = Rdw.Lisle PLOT CONFIG = PDF(Grey, Large).plt PLOT SCALE = 1:50 PLOT DATE = 12/3/2010	DESIGNED - EJB DRAWN - EJB CHECKED - CPK DATE - 12/3/2010	REVISED - REVISED - REVISED - REVISED -	Illinois Department of Transportation	<b>IRVING PARK ROAD          PAVEMENT MARKING &amp; SIGNING PLAN</b>		F.A. RTE. 2578 SECTION 532B COUNTY DUPAGE TOTAL SHEETS 781 SHEET NO. 334	CONTRACT NO. 60477
	SCALE: 1"=50'    SHEET PMK-13 OF 14    STA. 4+44.45 TO STA. 24+45.00					FED. ROAD DIST. NO.    ILLINOIS FED. AID PROJECT		

G:\DOT\9356\_A8\_(IL53)\D-awings\CADD Sheets\019139797-sht-pmk\_334.dgn