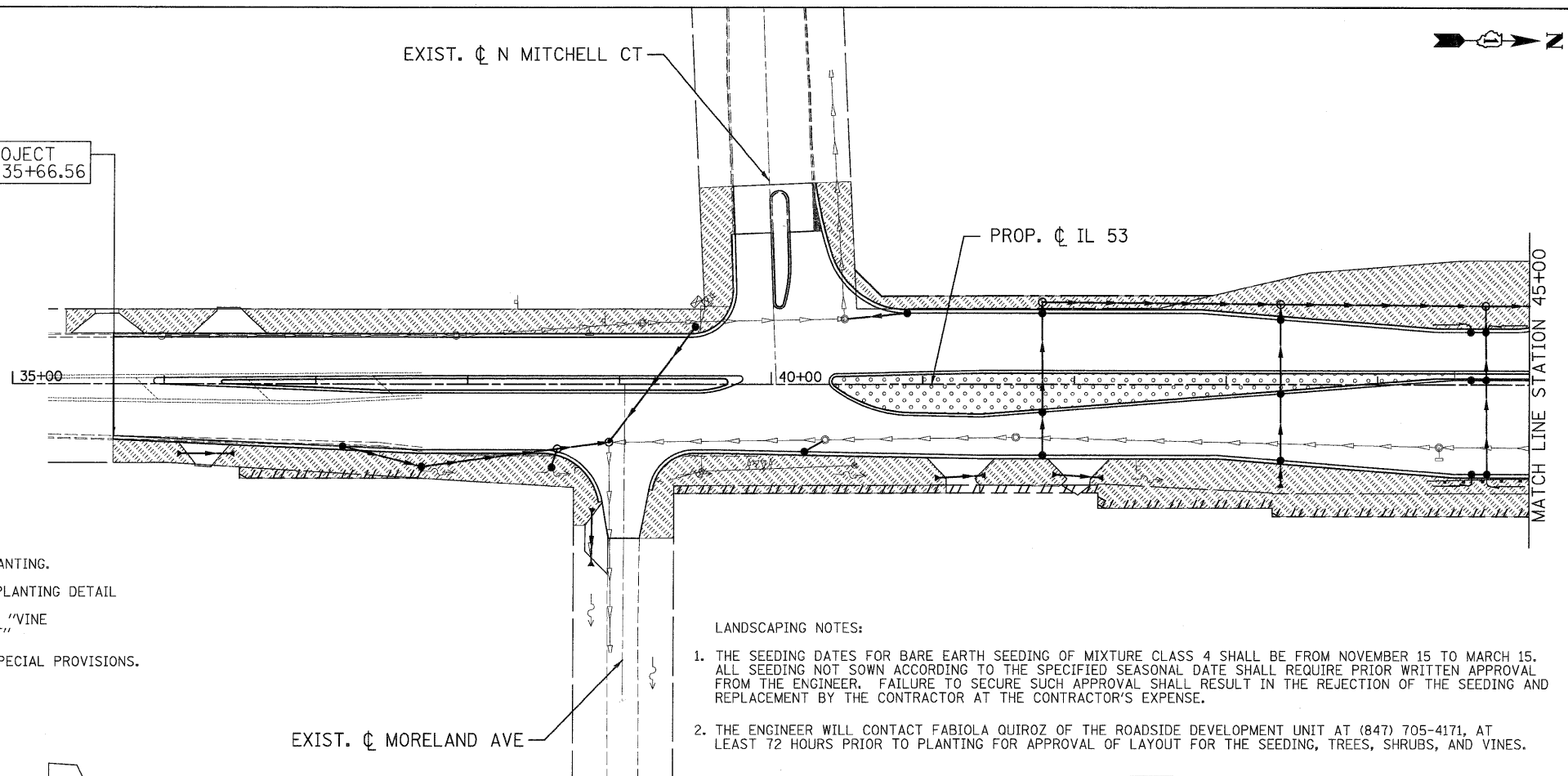


VINE PLANTING DETAIL

NOTES:

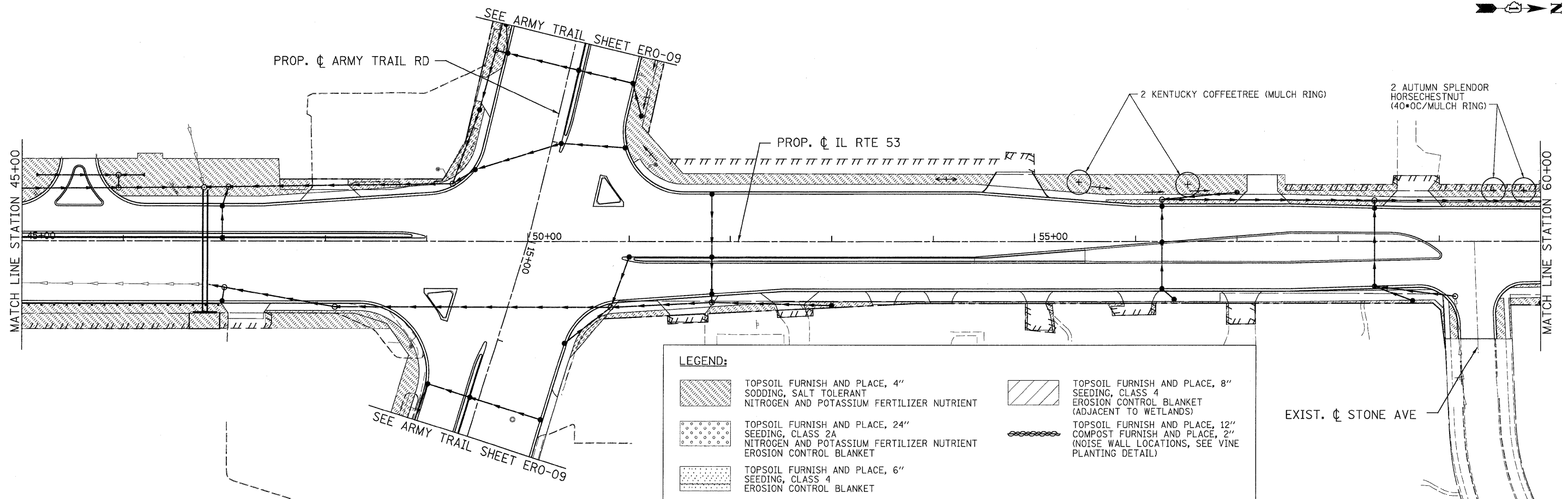
1. SEE LANDSCAPE PLANS FOR SPECIFIC LOCATIONS OF VINES.
2. COMPOST AND TOPSOIL SHALL BE THOROUGHLY ROTOTILLED TO A DEPTH OF 4" PRIOR TO PLANTING.
3. MULCH BED SHALL BE PLACED OVER ROTOTILLED COMPOST/TOPSOIL AS SHOWN IN THE VINE PLANTING DETAIL AND ACCORDING TO IDOT STANDARD SPECIFICATION 253.11 EXCEPT THAT NO WEED BARRIER FABRIC IS REQUIRED. THE COST OF MULCH COVER IS INCLUDED WITH PAYMENT FOR "VINE PARTHENOCISSUS QUINQUEFOLIA ENGEL-MANNII (ENGELMANNII VIRGINIA CREEPER), 1 GALLON POT"
4. PRE-EMERGENT GRANULAR HERBICIDE SHALL BE PLACED IN MULCH BEDS ACCORDING TO THE SPECIAL PROVISIONS.

BEGIN PROJECT STATION 35+66.56



LANDSCAPING NOTES:

1. THE SEEDING DATES FOR BARE EARTH SEEDING OF MIXTURE CLASS 4 SHALL BE FROM NOVEMBER 15 TO MARCH 15. ALL SEEDING NOT SOWN ACCORDING TO THE SPECIFIED SEASONAL DATE SHALL REQUIRE PRIOR WRITTEN APPROVAL FROM THE ENGINEER. FAILURE TO SECURE SUCH APPROVAL SHALL RESULT IN THE REJECTION OF THE SEEDING AND REPLACEMENT BY THE CONTRACTOR AT THE CONTRACTOR'S EXPENSE.
2. THE ENGINEER WILL CONTACT FABIOLA QUIROZ OF THE ROADSIDE DEVELOPMENT UNIT AT (847) 705-4171, AT LEAST 72 HOURS PRIOR TO PLANTING FOR APPROVAL OF LAYOUT FOR THE SEEDING, TREES, SHRUBS, AND VINES.



LEGEND:

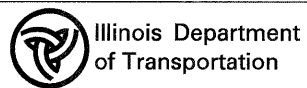
- | | | | |
|--|---|--|---|
| | TOPSOIL FURNISH AND PLACE, 4" SODDING, SALT TOLERANT NITROGEN AND POTASSIUM FERTILIZER NUTRIENT | | TOPSOIL FURNISH AND PLACE, 8" SEEDING, CLASS 4 EROSION CONTROL BLANKET (ADJACENT TO WETLANDS) |
| | TOPSOIL FURNISH AND PLACE, 24" SEEDING, CLASS 2A NITROGEN AND POTASSIUM FERTILIZER NUTRIENT EROSION CONTROL BLANKET | | TOPSOIL FURNISH AND PLACE, 12" COMPOST FURNISH AND PLACE, 2" (NOISE WALL LOCATIONS, SEE VINE PLANTING DETAIL) |
| | TOPSOIL FURNISH AND PLACE, 6" SEEDING, CLASS 4 EROSION CONTROL BLANKET | | |

PATRICK ENGINEERING INC.
4970 VARSITY DRIVE
LISLE, IL 60532
patrickengineering.com

USER NAME = Rdkj.Lisle
PLOT CONFIG = PDF(Greg_Large).plt
PLOT SCALE = 1:50
PLOT DATE = 12/3/2010

DESIGNED - J. MACKE
DRAWN - J. MACKE
CHECKED - D. DOERFLER
DATE - 12/3/2010

REVISED -
REVISED -
REVISED -
REVISED -



ILLINOIS ROUTE 53
LANDSCAPING DETAILS

SCALE: 1"=50' SHEET LCPE-1 OF 13 STA. 35+66.56 TO STA. 60+00

F.A.U. RTE.	SECTION	COUNTY	TOTAL SHEETS	SHEET NO.
2578	532B	DUPAGE	781	336
CONTRACT NO. 60477				