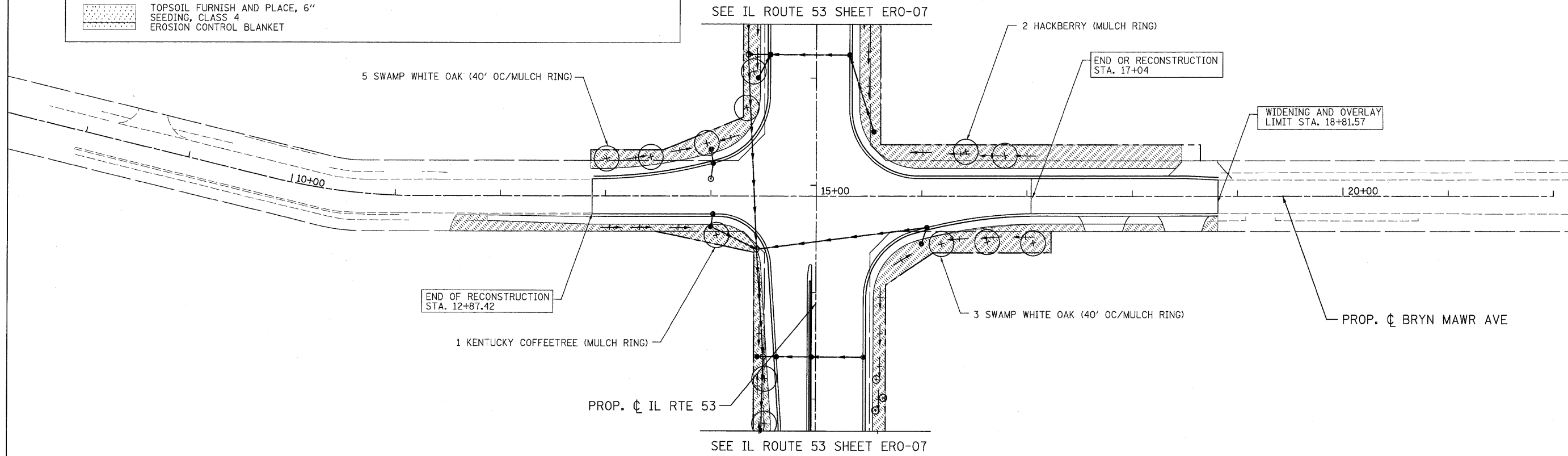
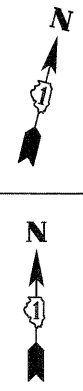


LEGEND:

	TOPSOIL FURNISH AND PLACE, 4" SODDING, SALT TOLERANT NITROGEN AND POTASSIUM FERTILIZER NUTRIENT		TOPSOIL FURNISH AND PLACE, 8" SEEDING, CLASS 4 EROSION CONTROL BLANKET (ADJACENT TO WETLANDS)
	TOPSOIL FURNISH AND PLACE, 24" SEEDING, CLASS 2A NITROGEN AND POTASSIUM FERTILIZER NUTRIENT EROSION CONTROL BLANKET		TOPSOIL FURNISH AND PLACE, 12" COMPOST FURNISH AND PLACE, 2" (NOISE WALL LOCATIONS, SEE VINE PLANTING DETAIL)
	TOPSOIL FURNISH AND PLACE, 6" SEEDING, CLASS 4 EROSION CONTROL BLANKET		

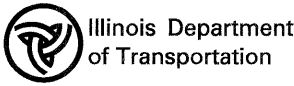


PATRICK ENGINEERING INC.
 4970 VARSITY DRIVE
 LISLE, IL 60532
 patrickengineering.com

USER NAME = Rdky.Lt1e
 PLOT CONFID= PDFGreg.Large.plt
 PLOT SCALE = 1:50
 PLOT DATE = 12/3/2010

DESIGNED - D. DOERFLER
 DRAWN - C. HELLAND
 CHECKED - A. JAMES
 DATE - 12/3/2010

REVISED -
 REVISED -
 REVISED -
 REVISED -



**NORDIC ROAD AND BRYN MAWR AVENUE
 LANDSCAPING DETAILS**

SCALE: 1"=50' SHEET EROS 11 OF 13 STA. TO STA.

F.A. RTE. 2578	SECTION 532B	COUNTY DUPAGE	TOTAL SHEETS 781	SHEET NO. 346
CONTRACT NO. 60477				
FED. ROAD DIST. NO. [ILLINOIS] FED. AID PROJECT				

G:\DOT\9356_A0... (L53)\Drawings\CADD Sheets\019139797-ah-1\Indsep_346.dgn