

WATER MAIN FITTINGS (RJT)

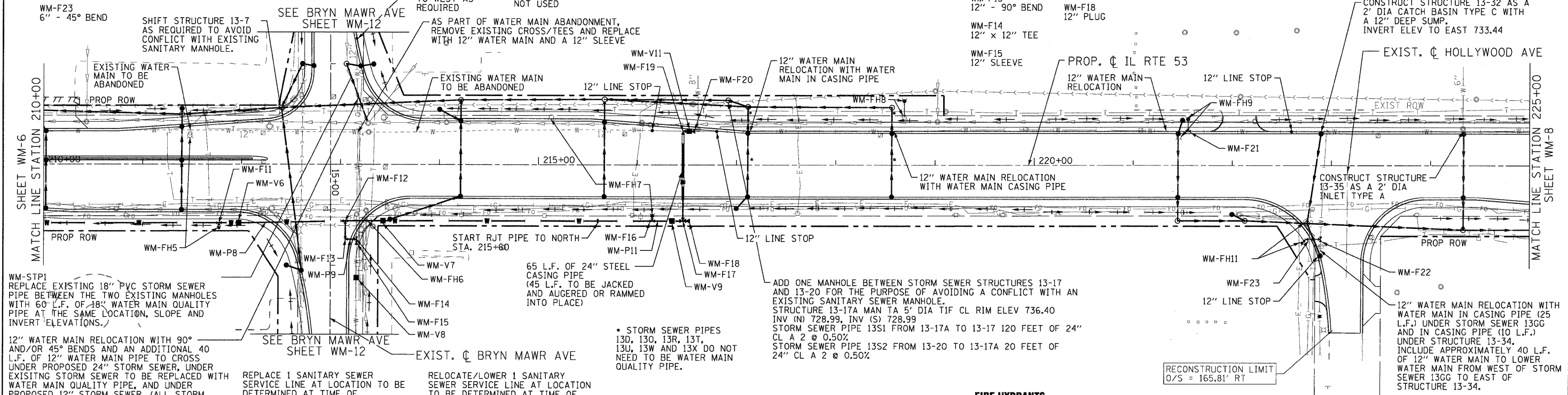
- WM-F21
12" x 6" TEE INSTALLED AS PART OF 12" WATER MAIN RELOCATION.
- WM-F22
12" x 6" TEE INSTALLED AS PART OF 12" WATER MAIN RELOCATION.
- WM-F23
6" - 45° BEND

WATER MAIN VALVES

- WM-V6
12" GATE VALVE IN 5' DIA VALVE VAULT
- WM-V7
12" GATE VALVE IN 5' DIA VALVE VAULT
- WM-V8
12" INSERTION VALVE IN 5' DIA VALVE VAULT
- WM-V9
12" GATE VALVE IN 5' DIA VALVE VAULT
- WM-V10
NOT USED
- WM-V11
12" GATE VALVE IN 5' DIA VALVE VAULT INSTALL BETWEEN WM-F19 AND TEE FOR 8" SERVICE LINE TO WEST

WATER MAIN FITTINGS (RJT)

- WM-F16
12" x 6" TEE
- WM-F17
12" x 12" TEE WITH CONCRETE THRUST BLOCK
- WM-F18
12" PLUG
- WM-F19
12" x 90° BEND WITH CONCRETE THRUST BLOCK
- WM-F20
12" SLEEVE
- WM-F11
12" x 6" TEE
- WM-F12
12" x 12" TEE
- WM-F13
12" - 90° BEND
- WM-F14
12" x 12" TEE
- WM-F15
12" SLEEVE



WM-STP1
REPLACE EXISTING 18" PVC STORM SEWER PIPE BETWEEN THE TWO EXISTING MANHOLES WITH 60' L.F. OF 18" WATER MAIN QUALITY PIPE AT THE SAME LOCATION, SLOPE AND INVERT ELEVATIONS.

12" WATER MAIN RELOCATION WITH 90° AND/OR 45° BENDS AND AN ADDITIONAL 40' L.F. OF 12" WATER MAIN PIPE TO CROSS UNDER PROPOSED 24" STORM SEWER, UNDER EXISTING STORM SEWER TO BE REPLACED WITH WATER MAIN QUALITY PIPE, AND UNDER PROPOSED 12" STORM SEWER, (ALL STORM SEWER PIPE WILL BE WATER MAIN QUALITY PIPE).

COMPLETE THIS WORK AFTER NEW WATER MAIN IS OPERATIONAL, AND REMOVE EXISTING VALVE AND VAULT LOCATED 10' EAST OF PROPOSED 24" STORM SEWER AS PART OF THIS WATER MAIN RELOCATION.

REPLACE 1 SANITARY SEWER SERVICE LINE AT LOCATION TO BE DETERMINED AT TIME OF CONSTRUCTION.

RELOCATE/LOWER 1 SANITARY SEWER SERVICE LINE AT LOCATION TO BE DETERMINED AT TIME OF CONSTRUCTION.

WATER MAIN PIPES

- WM-P8
560 L.F. OF 12" WATER MAIN
- WM-P9
30 L.F. OF 12" WATER MAIN (RJT)
- WM-P10
NOT USED
- WM-P11
200 L.F. OF 12" WATER MAIN (RJT)

WM-FH5
RELOCATE EXISTING FIRE HYDRANT WITH NEW AUXILIARY VALVE AND BOX AND LEADER PIPE.

WM-FH6
RELOCATE EXISTING FIRE HYDRANT WITH 12 L.F. OF 6" LEADER PIPE (RJT), LOCATE FIRE HYDRANT 5' SOUTH OF PROPOSED NORTH RIGHT-OF-WAY LINE. (A 6" LINE STOP MAY BE REQUIRED ON LEADER PIPE, IF LINE STOP IS NEEDED, INSTALL NEW AUXILIARY VALVE AND BOX ON LEADER PIPE.

WM-FH7
RELOCATE EXISTING FIRE HYDRANT WITH NEW AUXILIARY VALVE AND BOX AND LEADER PIPE

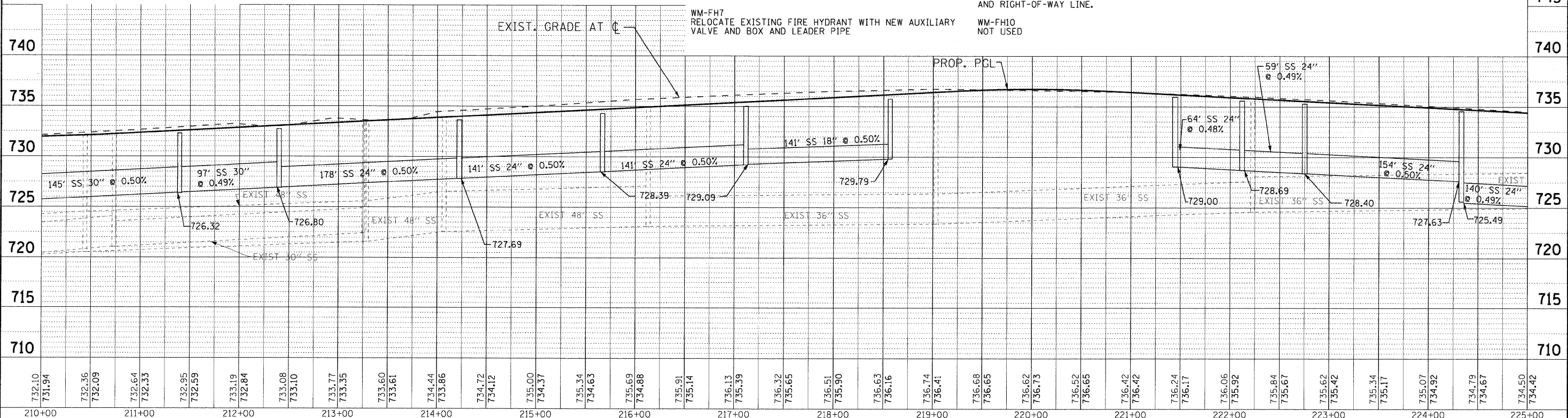
FIRE HYDRANTS

WM-FH8
RELOCATE EXISTING FIRE HYDRANT WITH 16 L.F. OF 6" LEADER PIPE (RJT) LOCATE FIRE HYDRANT 5' EAST OF PROPOSED WEST RIGHT-OF-WAY LINE.

WM-FH9
REMOVE FIRE HYDRANT, AUXILIARY VALVE AND BOX AS PART OF WATER MAIN RELOCATION. INSTALL NEW FIRE HYDRANT, AUXILIARY VALVE AND BOX AND 7 L.F. OF 6" LEADER PIPE (RJT) OVER EXISTING STORM SEWER. LOCATE FIRE HYDRANT BETWEEN EXISTING STORM SEWER AND RIGHT-OF-WAY LINE.

WM-FH10
NOT USED

WM-FH11
REMOVE EXISTING FIRE HYDRANT, AUXILIARY VALVE AND BOX AS PART OF WATER MAIN RELOCATION. RELOCATE EXISTING FIRE HYDRANT WITH 20 L.F. OF 6" LEADER PIPE (RJT), WITH NEW AUXILIARY VALVE AND BOX. LOCATE FIRE HYDRANT 5' SOUTHWEST OF SOUTHWEST CORNER OF SIDEWALK.



PLAN

DATE	
BY	
DESIGNED	
CHECKED	
IN CHARGE	
NO.	

PROFILE

DATE	
BY	
DESIGNED	
CHECKED	
IN CHARGE	
NO.	

	USER NAME = [username]	DESIGNED - SMV	REVISED - 8-27-10 VILLAGE REVIEW		ILLINOIS ROUTE 53 WATER AND SEWER REPLACEMENT PLAN AND PROFILE		F.A.U. RTE. 2578	SECTION 532B	COUNTY	TOTAL SHEETS 781	SHEET NO. 355
		PLOT CONFIG = PDF22X34.plt	DRAWN - UKB		REVISED -	SCALE: 1"=50'	SHEET NO. WM-7 OF 17	STA. 210+00 TO STA. 225+00	FED. ROAD DIST. NO.	ILLINOIS FED. AID PROJECT	CONTRACT NO. 60477

I:\Crystal Lake\117ASV\100647-Rt 53 W and S\CAD-SURVEY\DRAWINGS\DCNS\B&W-WM-PP-sht.26B.dgn