

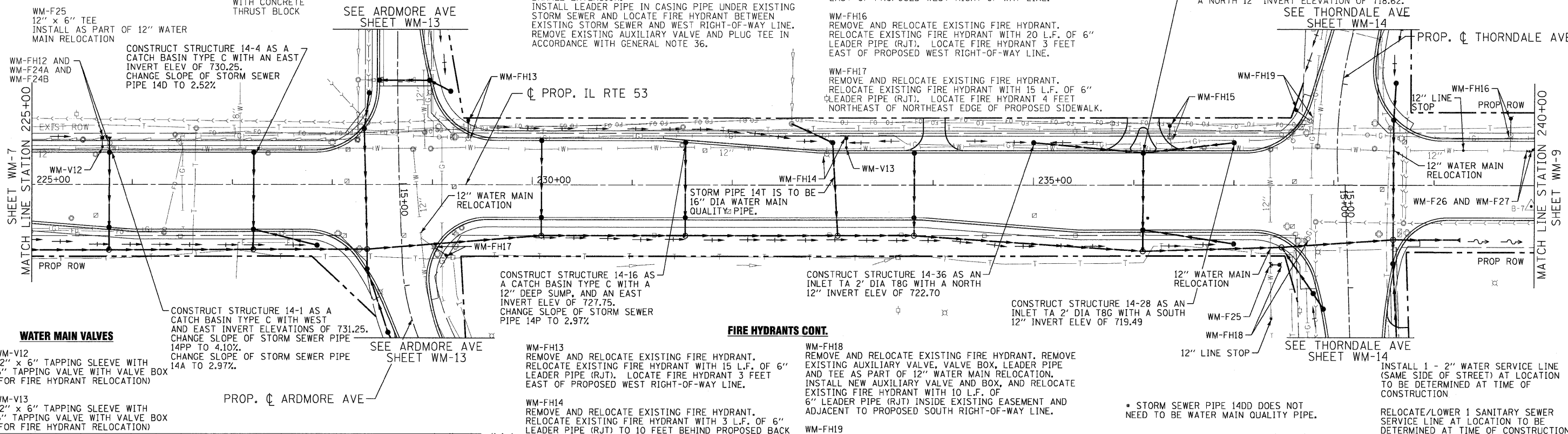
WATER MAIN FITTINGS (RJT)

- WM-F24A
6" - 45° BEND ROLLED DOWN
- WM-F24B
6" - 45° BEND ROLLED UP
- WM-F25
12" x 6" TEE
INSTALL AS PART OF 12" WATER MAIN RELOCATION
- WM-F26
12" SLEEVE
- WM-F27
12" - 45° BEND WITH CONCRETE THRUST BLOCK

FIRE HYDRANTS

- WM-FH12
REMOVE AND RELOCATE EXISTING FIRE HYDRANT. RELOCATE EXISTING FIRE HYDRANT WITH 6 L.F. OF 6" LEADER PIPE (RJT) AND 5 VERT. FT. OF FIRE HYDRANT BARREL EXTENSION. INSTALL LEADER PIPE IN CASING PIPE UNDER EXISTING STORM SEWER AND LOCATE FIRE HYDRANT BETWEEN EXISTING STORM SEWER AND WEST RIGHT-OF-WAY LINE. REMOVE EXISTING AUXILIARY VALVE AND PLUG TEE IN ACCORDANCE WITH GENERAL NOTE 36.
- WM-FH15
REMOVE AND RELOCATE EXISTING FIRE HYDRANT. RELOCATE EXISTING FIRE HYDRANT WITH 15 L.F. OF 6" LEADER PIPE (RJT). LOCATE FIRE HYDRANT 3 FEET EAST OF PROPOSED WEST RIGHT-OF-WAY LINE.
- WM-FH16
REMOVE AND RELOCATE EXISTING FIRE HYDRANT. RELOCATE EXISTING FIRE HYDRANT WITH 20 L.F. OF 6" LEADER PIPE (RJT). LOCATE FIRE HYDRANT 3 FEET EAST OF PROPOSED WEST RIGHT-OF-WAY LINE.
- WM-FH17
REMOVE AND RELOCATE EXISTING FIRE HYDRANT. RELOCATE EXISTING FIRE HYDRANT WITH 15 L.F. OF 6" LEADER PIPE (RJT). LOCATE FIRE HYDRANT 3 FEET NORTHEAST OF NORTHEAST EDGE OF PROPOSED SIDEWALK.

IF THE LOCATION OF STRUCTURE 14-25 CONFLICTS WITH THE EXISTING WATER MAIN, MOVE STRUCTURE 14-25 TO THE EAST AND CONSTRUCT AN ADDITIONAL INLET STRUCTURE AT THE PROPOSED LOCATION OF STRUCTURE 14-25. CONSTRUCT STRUCTURE 14-25 WITH A SOUTH 12" INVERT ELEVATION OF 720.58 AND A NORTH 12" INVERT ELEVATION OF 718.62.



WATER MAIN VALVES

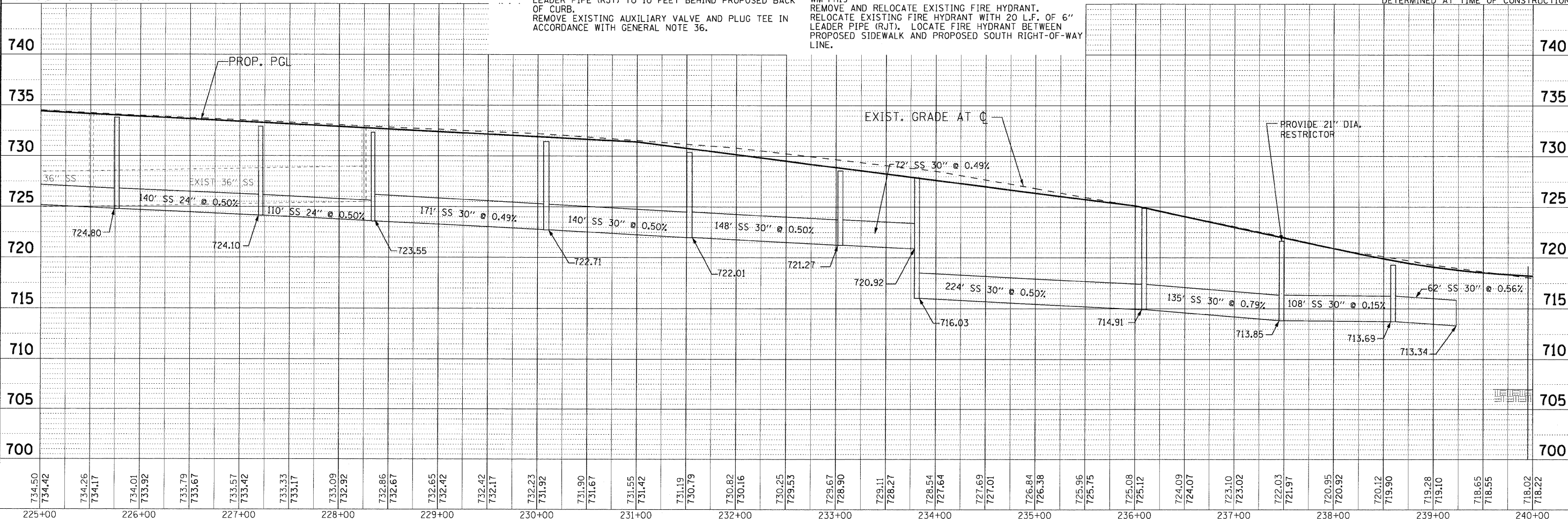
- WM-V12
12" x 6" TAPPING SLEEVE WITH 6" TAPPING VALVE WITH VALVE BOX (FOR FIRE HYDRANT RELOCATION)
- WM-V13
12" x 6" TAPPING SLEEVE WITH 6" TAPPING VALVE WITH VALVE BOX (FOR FIRE HYDRANT RELOCATION)

FIRE HYDRANTS CONT.

- WM-FH13
REMOVE AND RELOCATE EXISTING FIRE HYDRANT. RELOCATE EXISTING FIRE HYDRANT WITH 15 L.F. OF 6" LEADER PIPE (RJT). LOCATE FIRE HYDRANT 3 FEET EAST OF PROPOSED WEST RIGHT-OF-WAY LINE.
- WM-FH14
REMOVE AND RELOCATE EXISTING FIRE HYDRANT. RELOCATE EXISTING FIRE HYDRANT WITH 3 L.F. OF 6" LEADER PIPE (RJT) TO 10 FEET BEHIND PROPOSED BACK OF CURB. REMOVE EXISTING AUXILIARY VALVE AND PLUG TEE IN ACCORDANCE WITH GENERAL NOTE 36.
- WM-FH18
REMOVE AND RELOCATE EXISTING FIRE HYDRANT. REMOVE EXISTING AUXILIARY VALVE, VALVE BOX, LEADER PIPE AND TEE AS PART OF 12" WATER MAIN RELOCATION. INSTALL NEW AUXILIARY VALVE AND BOX, AND RELOCATE EXISTING FIRE HYDRANT WITH 10 L.F. OF 6" LEADER PIPE (RJT) INSIDE EXISTING EASEMENT AND ADJACENT TO PROPOSED SOUTH RIGHT-OF-WAY LINE.
- WM-FH19
REMOVE AND RELOCATE EXISTING FIRE HYDRANT. RELOCATE EXISTING FIRE HYDRANT WITH 20 L.F. OF 6" LEADER PIPE (RJT). LOCATE FIRE HYDRANT BETWEEN PROPOSED SIDEWALK AND PROPOSED SOUTH RIGHT-OF-WAY LINE.

* STORM SEWER PIPE 14DD DOES NOT NEED TO BE WATER MAIN QUALITY PIPE.

INSTALL 1 - 2" WATER SERVICE LINE (SAME SIDE OF STREET) AT LOCATION TO BE DETERMINED AT TIME OF CONSTRUCTION.
RELOCATE/LOWER 1 SANITARY SEWER SERVICE LINE AT LOCATION TO BE DETERMINED AT TIME OF CONSTRUCTION.



DATE	
BY	
REVIEWED	
APPROVED	
PLANNING	
DESIGN	
CONSTRUCTION	

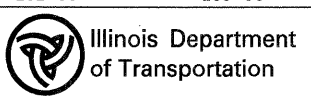
DATE	
BY	
REVIEWED	
APPROVED	
PLANNING	
DESIGN	
CONSTRUCTION	



USER NAME = jasper@baxter.com
PLOT CONFIG = PDF22X34.plt
PLOT SCALE = 1:500
PLOT DATE = 11/24/2010 9:00:56 AM

DESIGNED - SMV
DRAWN - LKB
CHECKED - SMV
DATE - 7-30-2010

REVISED - 8-27-10 VILLAGE REVIEW
REVISED -
REVISED -
REVISED -



**ILLINOIS ROUTE 53
WATER AND SEWER REPLACEMENT PLAN AND PROFILE**

SCALE: 1"=50' SHEET NO. WM-8 OF 17 STA. 225+00 TO STA. 240+00

F.A.U. RTE. 2578	SECTION 532B	COUNTY	TOTAL SHEETS 781	SHEET NO. 356
FED. ROAD DIST. NO.		ILLINOIS FED. AID PROJECT		CONTRACT NO. 60477

I:\Crystal Lake\11ASV\102547-Rt 53 W and S\CAADD-SURVEY\DRAWINGS\DGNS\B&W-WM-PP-sht.263.dgn