

WATER MAIN PIPES

WM-P12
65 L.F. OF 12" WATER MAIN (RJT)

WM-P13
535 L.F. OF 12" WATER MAIN (RJT)
INSTALLED BY HORIZONTAL DIRECTIONAL
DRILLING METHODS.
TERMINATE LOCATOR WIRE IN WM-V14
AND IN WM-V15A.

WM-P14
NOT USED

WM-P15
120 L.F. OF 12" WATER MAIN (RJT)

WM-P16 THRU WM-P19
NOT USED

PROVIDE A MINIMUM OF
18" SEPARATION BETWEEN
TOP OF WATER MAIN AND
BOTTOM OF STORM SEWER

WATER MAIN FITTINGS (RJT)

WM-F28
12" - 45° BEND

WM-F29
12" - 90° BEND

WM-F30
NOT USED

WM-F31
12" - 90° BEND

WM-F32A
12" - 45° BEND, ROLLED UP

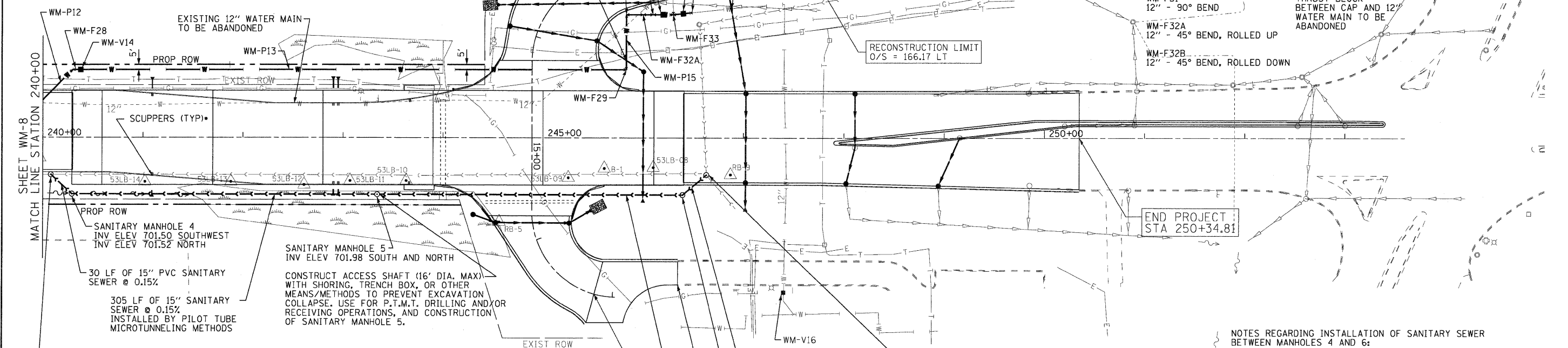
WM-F32B
12" - 45° BEND, ROLLED DOWN

WM-F33
12" X 12" TEE WITH
CONCRETE THRUST BLOCK

WM-F34
12" SLEEVE

WM-F35
12" CAP WITH CONCRETE
THRUST BLOCK
BETWEEN CAP AND 12"
WATER MAIN TO BE
ABANDONED

WM-F36 THROUGH WM-F39
NOT USED



SCUPPERS (TYP.)

SANITARY MANHOLE 4
INV ELEV 701.50 SOUTHWEST
INV ELEV 701.52 NORTH

30 LF OF 15" PVC SANITARY
SEWER @ 0.15%

305 LF OF 15" SANITARY
SEWER @ 0.15%
INSTALLED BY PILOT TUBE
MICROTUNNELING METHODS

CONSTRUCT NEW SANITARY MANHOLE 3
ON EXISTING SEWER
INV ELEV 701.45 SOUTH
INV ELEV 701.45 NORTHEAST
CONSTRUCT SAN MH3 AFTER THE SEWERS
BETWEEN SAN MH'S 4, 5 AND 6 ARE COMPLETE.
BYPASS FLOW FROM SAN MH4 TO THE EXISTING
DOWNSTREAM MANHOLE TO INSTALL SAN MH3.

SANITARY MANHOLE 5
INV ELEV 701.98 SOUTH AND NORTH

CONSTRUCT ACCESS SHAFT (16' DIA. MAX)
WITH SHORING, TRENCH BOX, OR OTHER
MEANS/METHODS TO PREVENT EXCAVATION
COLLAPSE. USE FOR P.T.M.T. DRILLING AND/OR
RECEIVING OPERATIONS, AND CONSTRUCTION
OF SANITARY MANHOLE 5.

WATER MAIN VALVES

WM-V14
12" GATE VALVE WITH 5' DIA
VALVE VAULT

WM-V15A
12" GATE VALVE WITH 5' DIA
VALVE VAULT

WM-V15B
12" GATE VALVE WITH 5' DIA
VALVE VAULT

WM-V16
12" INSERTION VALVE WITH
5' DIA VALVE VAULT.
LOCATION TO BE DETERMINED
AT THE TIME OF CONSTRUCTION.

WM-V17 THROUGH WM-V19
NOT USED

30 LF OF 16" D.I. SANITARY
SEWER @ 0.15%

SANITARY MANHOLE 6
INV ELEV 702.44 SOUTH
INV ELEV 702.46 NORTHWEST

WIDENING AND RESURFACING
LIMIT O/S = 120.80' RT

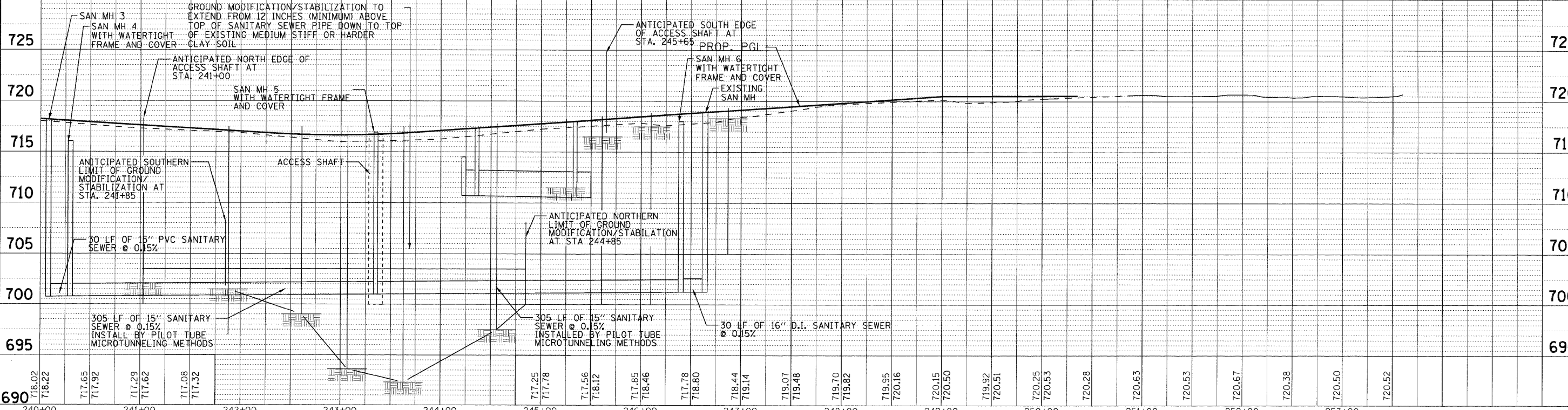
305 LF OF 15" SANITARY
SEWER @ 0.15%
INSTALLED BY PILOT TUBE
MICROTUNNELING METHODS

REMOVE EXISTING 15-INCH SEWER IN SOUTH SIDE
OF EXISTING MANHOLE, AND BREAK OUT EXISTING
INVERT/BENCH. INSTALL NEW 14-INCH, CLASS 50 D.I.
SANITARY SEWER IN SOUTHWEST SIDE OF EXISTING MANHOLE.
INV ELEV 702.51 SE (702.52 W, 703.84 NE)
FORM NEW INVERT/BENCH BETWEEN EXISTING PIPES
AND NEW D.I. PIPE

PROVIDE TEMPORARY BYPASS PUMPING AS REQUIRED
TO COMPLETE WORK AT AND INSIDE EXISTING MANHOLE
(SEE SPECIAL PROVISIONS)

NOTES REGARDING INSTALLATION OF SANITARY SEWER
BETWEEN MANHOLES 4 AND 6:

DEPENDING ON THE SOIL CONDITIONS FOUND AT THE
TIME OF CONSTRUCTION, THE ACCESS SHAFT AT THE
SOUTH END OF THE SANITARY SEWER, NEAR SAN MH 4,
MAY BE MOVED FURTHER NORTH, BUT NO FURTHER
NORTH THAN THE SOUTH EDGE OF THE WETLAND AREA.
THE ACCESS SHAFT AT THE NORTH END OF THE SANITARY
SEWER, NEAR SAN MH 6, MAY BE MOVED FURTHER SOUTH,
BUT NO FURTHER SOUTH THAN 20 FEET NORTH OF THE
PROPOSED BACK OF CURB OF NORWOOD AVENUE.
THE WORK TO INSTALL THE SANITARY SEWER BETWEEN
SANITARY MANHOLES 4 AND 6 WILL BE PAID FOR AT THE
CONTRACT LUMP SUM PRICE, REGARDLESS OF LOCATION
OF ACCESS SHAFTS, AMOUNT OF OPEN CUT TRENCH, AND
AMOUNT OF GRANULAR BACKFILL MATERIAL.



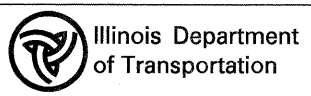
735
730
725
720
715
710
705
700
695

DATE	
BY	
REVISION	
NO.	
DESCRIPTION	
DATE	
BY	
REVISION	
NO.	
DESCRIPTION	
DATE	
BY	
REVISION	
NO.	
DESCRIPTION	

DATE	
BY	
REVISION	
NO.	
DESCRIPTION	
DATE	
BY	
REVISION	
NO.	
DESCRIPTION	
DATE	
BY	
REVISION	
NO.	
DESCRIPTION	



USER NAME = (username)	DESIGNED - SMV	REVISED - 8-27-10 VILLAGE REVIEW
PLOT CONFIG = PDF22X34.plt	DRAWN - UKB	REVISED - 11-2-10 I.D.O.T. REVIEW
PLOT SCALE = 1:50	CHECKED - SMV	REVISED -
PLOT DATE = 11/24/2010 9:10:24 AM	DATE - 7-30-2010	REVISED -



**ILLINOIS ROUTE 53
WATER AND SEWER REPLACEMENT PLAN AND PROFILE**

SCALE: 1"=50' SHEET NO. WM-9 OF 17 STA. 240+00 TO STA. 250+12.07

F.A.U. RTE.	SECTION	COUNTY	TOTAL SHEETS	SHEET NO.
2578	532B	DUPAGE	781	357
CONTRACT NO. 60477			ILLINOIS FED. AID PROJECT	

I:\Crystal Lake\11\ASV\102547-Rt 53 W and S\VCADD-SURVEY\DRAWINGS\DCNS\B&W-WM-PP-sht.270.dgn