

F.A. RTE.	SECTION	COUNTY	TOTAL SHEETS	SHEET NO.
2578	532B	DU PAGE	781	367
ILLINOIS		CONTRACT NO. 60477		

STATE OF ILLINOIS

DEPARTMENT OF TRANSPORTATION

DIVISION OF HIGHWAYS

PLANS FOR PROPOSED HIGHWAY

FAP ROUTE 870 / FAU ROUTE 2578 (ILLINOIS ROUTE 53)

ARMY TRAIL ROAD TO ELGIN O'HARE EXPRESSWAY

ROADWAY RECONSTRUCTION, ADDITIONAL LANES, DRY LAND BRIDGE CONSTRUCTION, TRAFFIC SIGNAL MODERNIZATION AND INTERCONNECT

SECTION 532B

PROJECT NO. _____

DUPAGE COUNTY

C-91-397-97

FOR INDEX OF SHEETS, SEE SHEET NO. 2

HIGHWAY CLASSIFICATION

PRINCIPAL ARTERIAL ROUTE :
(FROM ARMY TRAIL ROAD TO LAKE STREET)

SUBURBAN MINOR ARTERIAL :
(FROM LAKE STREET TO THE ELGIN-O'HARE EXPRESSWAY)

DESIGN DESIGNATION

3500(20) ARTERIAL 14.56 (PCC-20)

2 OF 2

TRAFFIC DATA

IL RTE 53

2002 ADT = 14,200 - 28,800

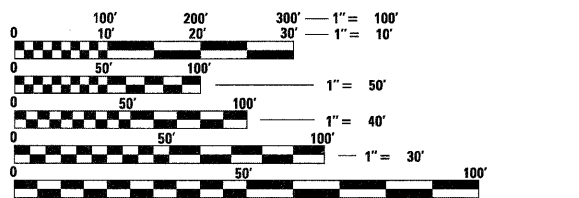
2020 ADT = 26,000 - 35,000

POSTED SPEED LIMIT = 40 MPH

DESIGN SPEED = 45 MPH

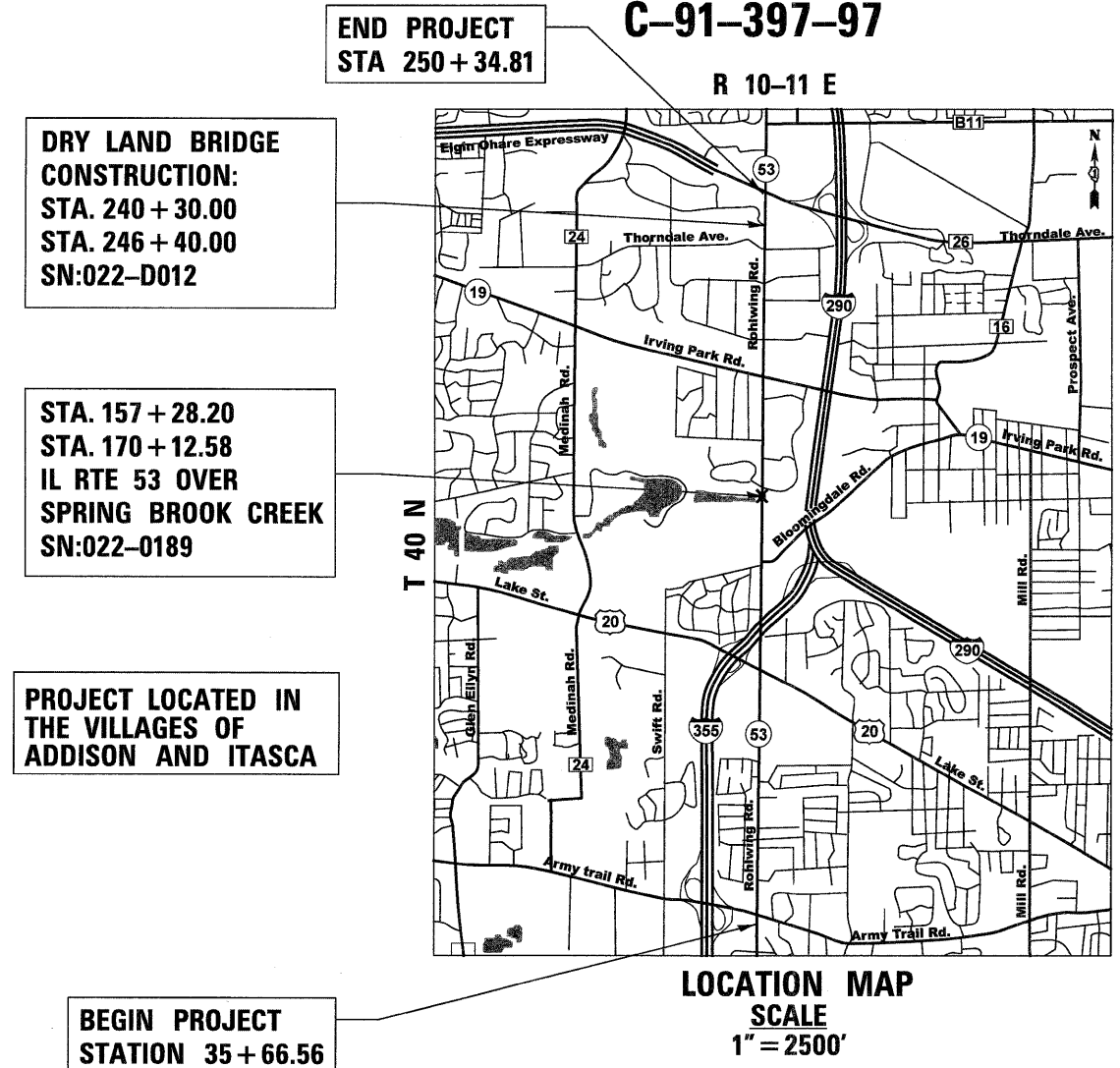
PROJECT DESCRIPTION

THE PROPOSED IMPROVEMENT CONSISTS OF THE WIDENING AND RECONSTRUCTION OF ILLINOIS ROUTE 53 ON THE EXISTING ALIGNMENT, NEW STORM SEWER SYSTEM, NOISE WALLS, DRY LAND BRIDGE, AND TRAFFIC SIGNAL MODERNIZATION.

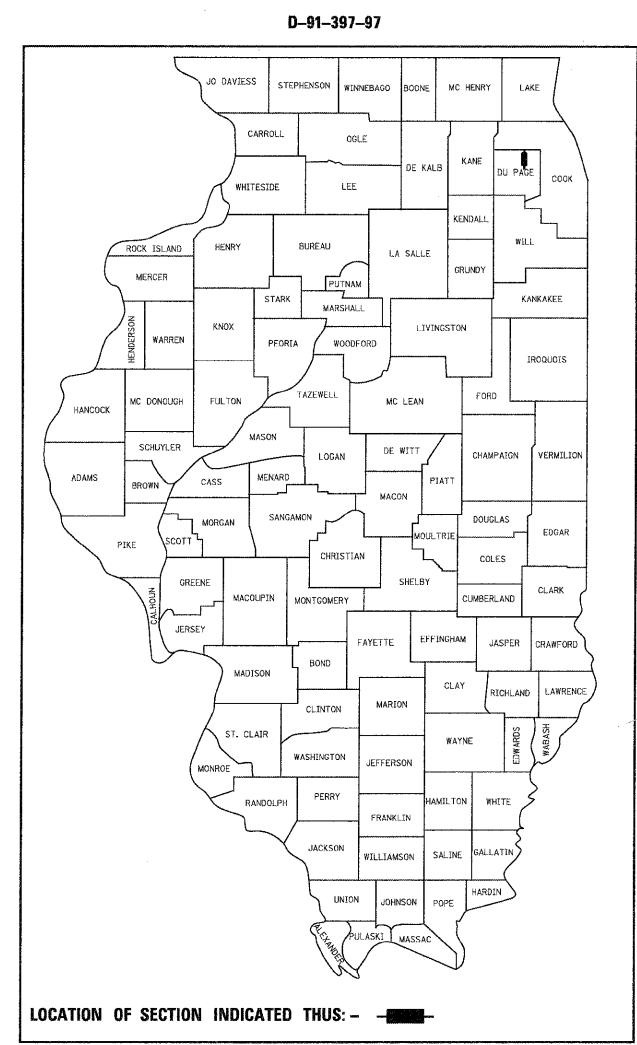


FULL SIZE PLANS HAVE BEEN PREPARED USING STANDARD ENGINEERING SCALES. REDUCED SIZED PLANS WILL NOT CONFORM TO STANDARD SCALES. IN MAKING MEASUREMENTS ON REDUCED PLANS, THE ABOVE SCALES MAY BE USED.

J.U.L.I.E.
JOINT UTILITY LOCATION INFORMATION FOR EXCAVATION
1-800-892-0123 OR 811



GROSS LENGTH ILLINOIS RTE 53 = 21,468.25 FEET = 4.1 MILES
NET LENGTH ILLINOIS RTE 53 = 21,468.25 FEET = 4.1 MILES



PATRICK ENGINEERING INC.
4970 VARSITY DRIVE
LISLE, IL 60532
patrickengineering.com

PRINTED BY THE AUTHORITY OF THE STATE OF ILLINOIS

DISTRICT 1 - DESIGN/CONSULTANT SERVICES SECTION/ RAJENDRA SHAH (847) 705-4555

CONTRACT NO. 60477