

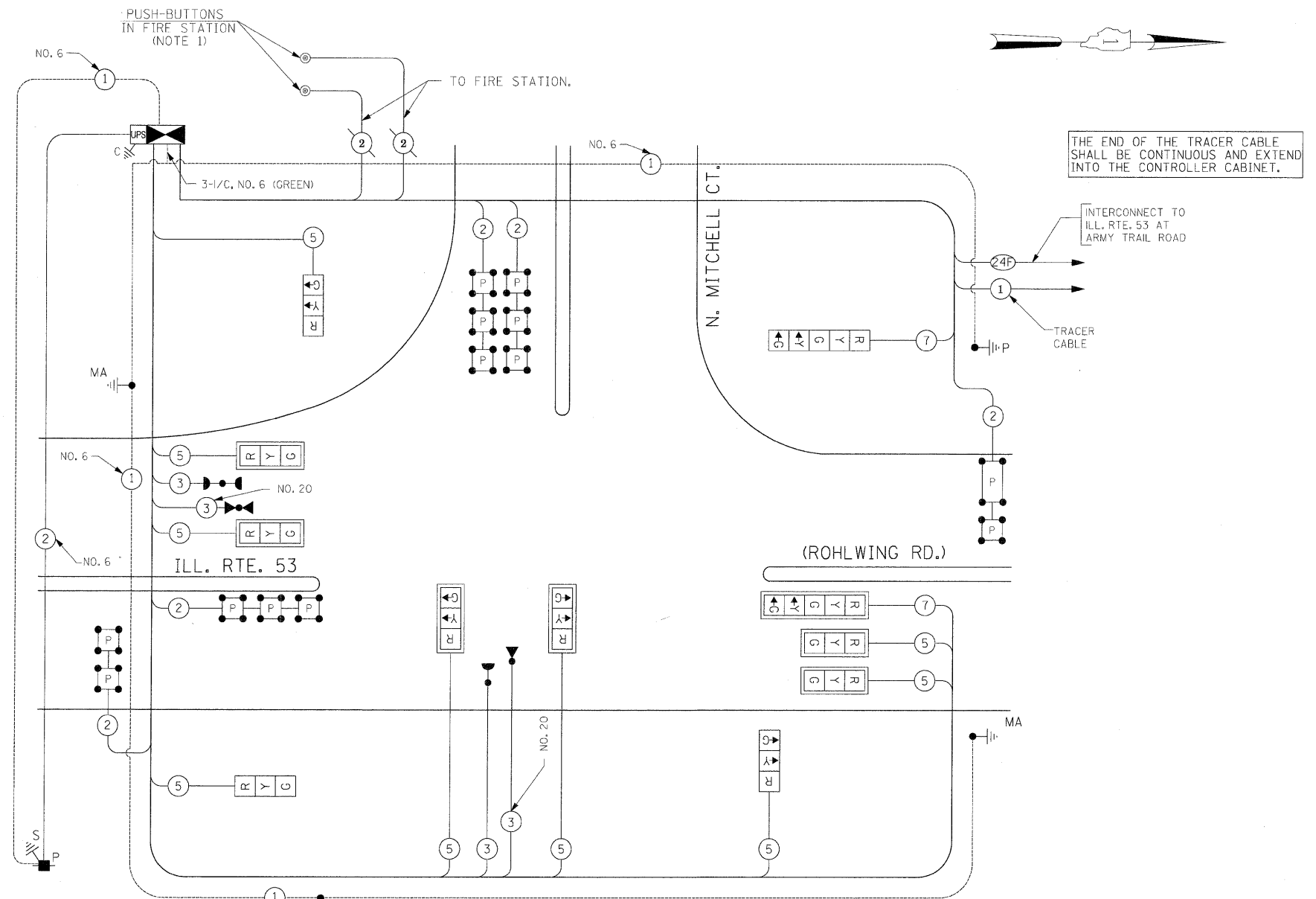
SCHEDULE OF QUANTITIES

| QUANTITY | UNIT | ITEM |
|----------|-------|---|
| 9 | SQ FT | SIGN PANEL - TYPE 1 |
| 21 | SQ FT | SIGN PANEL - TYPE 2 |
| 492 | FOOT | CONDUIT IN TRENCH, 2" DIA., GALVANIZED STEEL |
| 5 | FOOT | CONDUIT IN TRENCH, 2 1/2" DIA., GALVANIZED STEEL |
| 116 | FOOT | CONDUIT IN TRENCH, 3" DIA., GALVANIZED STEEL |
| 50 | FOOT | CONDUIT IN TRENCH, 4" DIA., GALVANIZED STEEL |
| 202 | FOOT | CONDUIT PUSHED, 2" DIA., GALVANIZED STEEL |
| 186 | FOOT | CONDUIT PUSHED, 4" DIA., GALVANIZED STEEL |
| 5 | EACH | HANDHOLE |
| 1 | EACH | HEAVY-DUTY HANDHOLE |
| 1 | EACH | DOUBLE HANDHOLE |
| 663 | FOOT | TRENCH AND BACKFILL FOR ELECTRICAL WORK |
| 1 | EACH | FULL-ACTUATED CONTROLLER AND TYPE IV CABINET, SPECIAL |
| 1 | EACH | TRANSCEIVER-FIBER OPTIC |
| 280 | FOOT | ELECTRIC CABLE IN CONDUIT, SIGNAL NO. 14 3C |
| 1561 | FOOT | ELECTRIC CABLE IN CONDUIT, SIGNAL NO. 14 5C |
| 440 | FOOT | ELECTRIC CABLE IN CONDUIT, SIGNAL NO. 14 7C |
| 905 | FOOT | ELECTRIC CABLE IN CONDUIT, LEAD-IN, NO. 14 1 PAIR |
| 150 | FOOT | ELECTRIC CABLE IN CONDUIT, SERVICE, NO. 6 2C |
| 1 | EACH | TRAFFIC SIGNAL POST, GALVANIZED STEEL 16 FT. |
| 1 | EACH | STEEL MAST ARM ASSEMBLY AND POLE, 28 FT. |
| 1 | EACH | STEEL MAST ARM ASSEMBLY AND POLE, 36 FT. |
| 1 | EACH | STEEL MAST ARM ASSEMBLY AND POLE, 38 FT. |
| 4 | FOOT | CONCRETE FOUNDATION, TYPE A |
| 4 | FOOT | CONCRETE FOUNDATION, TYPE C |
| 10 | FOOT | CONCRETE FOUNDATION, TYPE E 30-INCH DIAMETER |
| 30 | FOOT | CONCRETE FOUNDATION, TYPE E 36-INCH DIAMETER |
| 3 | EACH | SIGNAL HEAD, LED, 1-FACE, 3-SECTION, BRACKET MOUNTED |
| 6 | EACH | SIGNAL HEAD, LED, 1-FACE, 3-SECTION, MAST-ARM MOUNTED |
| 1 | EACH | SIGNAL HEAD, LED, 1-FACE, 5-SECTION, BRACKET MOUNTED |
| 1 | EACH | SIGNAL HEAD, LED, 1-FACE, 5-SECTION, MAST-ARM MOUNTED |
| 7 | EACH | TRAFFIC SIGNAL BACKPLATE, LOUVERED, ALUMINUM |
| 5 | EACH | INDUCTIVE LOOP DETECTOR |
| 2 | EACH | LIGHT DETECTOR |
| 1 | EACH | LIGHT DETECTOR AMPLIFIER |
| 35 | FOOT | REMOVE AND REINSTALL ELECTRIC CABLE FROM CONDUIT |
| 1 | EACH | REMOVE TEMPORARY TRAFFIC SIGNAL INSTALLATION |
| 2 | EACH | REMOVE EXISTING HANDHOLE |
| 472 | FOOT | PREFORMED DETECTOR LOOP |
| 1 | EACH | TEMPORARY TRAFFIC SIGNAL TIMING |
| 1 | EACH | SERVICE INSTALLATION - POLE MOUNTED |
| 1 | EACH | UNINTERRUPTIBLE POWER SUPPLY |
| 586 | FOOT | ELECTRIC CABLE IN CONDUIT, GROUNDING, NO. 6 1C |
| 280 | FOOT | ELECTRIC CABLE IN CONDUIT NO. 20 3/C, TWISTED, SHIELDED |
| 1 | EACH | MODIFY TEMPORARY TRAFFIC SIGNAL INSTALLATION |

* 100% COST TO VILLAGE OF ADDISON

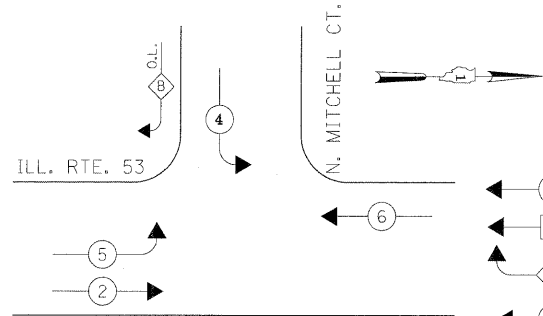
| I.D.O.T. TRAFFIC SIGNAL INSTALLATION ELECTRICAL SERVICE REQUIREMENTS | | | | TOTAL WATTAGE |
|---|----------------------|-------------------|------------|------------------|
| TYPE | NO. LAMPS | WATTAGE | %OPERATION | |
| SIGNAL (RED) | 11 | 135 | 0.50 | 93.5 |
| | 11 | 135 | 0.25 | 68.75 |
| | 11 | 135 | 0.25 | 41.25 |
| ARROW | 4 | 135 | 0.10 | 4.8 |
| PED. SIGNAL | | 90 | 1.00 | |
| CONTROLLER | 1 | 100 | 1.00 | 100 |
| ILLUM. SIGN | | 25 | 0.05 | |
| FLASHER | | | 0.50 | |
| ENERGY COSTS TO: | | | | TOTAL = 308.3 |
| ILLINOIS DEPARTMENT OF TRANSPORTATION 201 WEST CENTER COURT SCHAUMBURG, ILLINOIS 60196-1096 | | | | |
| ENERGY SUPPLY CONTACT: CURTIS TOPPS PHONE: (630) 691-4356 COMPANY: COMMONWEALTH EDISON | | | | |
| FILE NAME = | USER NAME = #USER# | DESIGNED - PKG | REVISED - | |
| #FILE# | | DRAWN - MAA, EA | REVISED - | |
| | PLOT SCALE = #SCALE# | CHECKED - PKG, EA | REVISED - | |
| | PLOT DATE = #DATE# | DATE - 5/10/2010 | REVISED - | |

THE TRAFFIC SIGNAL CONTROL EQUIPMENT FOR THIS PROJECT SHALL BE "ECONOLITE" TO MATCH THE EXISTING ADJACENT SYSTEM.



CABLE PLAN
(NOT TO SCALE)

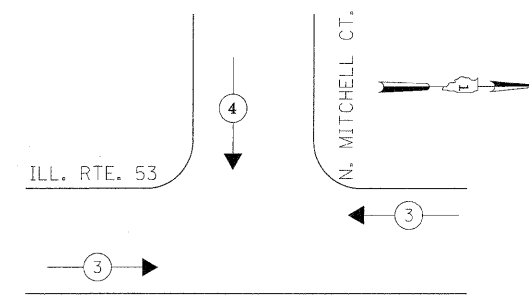
CONTROLLER SEQUENCE



PHASE DESIGNATION DIAGRAM



EMERGENCY VEHICLE PREEMPTION SEQUENCE



NOTE: THE EMERGENCY VEHICLE PREEMPTION FOR THE WEST APPROACH SHALL ALSO BE ACTIVATED VIA PUSH-BUTTONS LOCATED INSIDE THE FIRE STATION PREMISES.

| PROPOSED EMERGENCY VEHICLE PREEMPTORS | | |
|---------------------------------------|---|---|
| EMERGENCY VEHICLE PREEMPTOR | 3 | 4 |
| MOVEMENT | ← | ↓ |

STATE OF ILLINOIS
DEPARTMENT OF TRANSPORTATION

CABLE PLAN, PHASE DESIGNATION DIAGRAM
EMERGENCY VEHICLE PREEMPTION SEQUENCE
SCHEDULE OF QUANTITIES
ILLINOIS ROUTE 53 (ROHLWING RD.) AT N. MITCHELL CT.

| F.A.P. RTE. | SECTION | COUNTY | TOTAL SHEETS | SHEET NO. |
|--------------------|---------|--------|--------------|-----------|
| 2578 | 532B | DuPage | 781 | 437 |
| CONTRACT NO. 60477 | | | | |

SCALE: NONE SHEET NO. OF SHEETS STA. TO STA.

FED. ROAD DIST. NO. - ILLINOIS FED. AID PROJECT