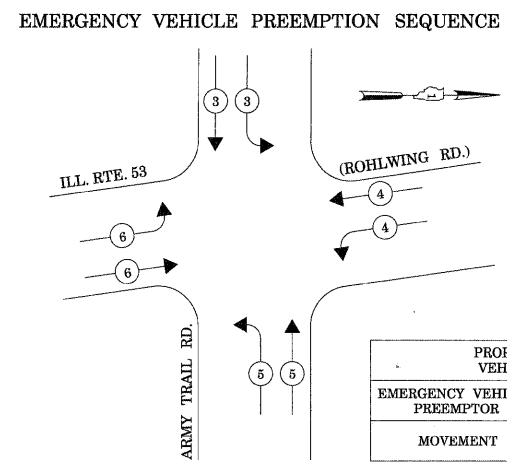
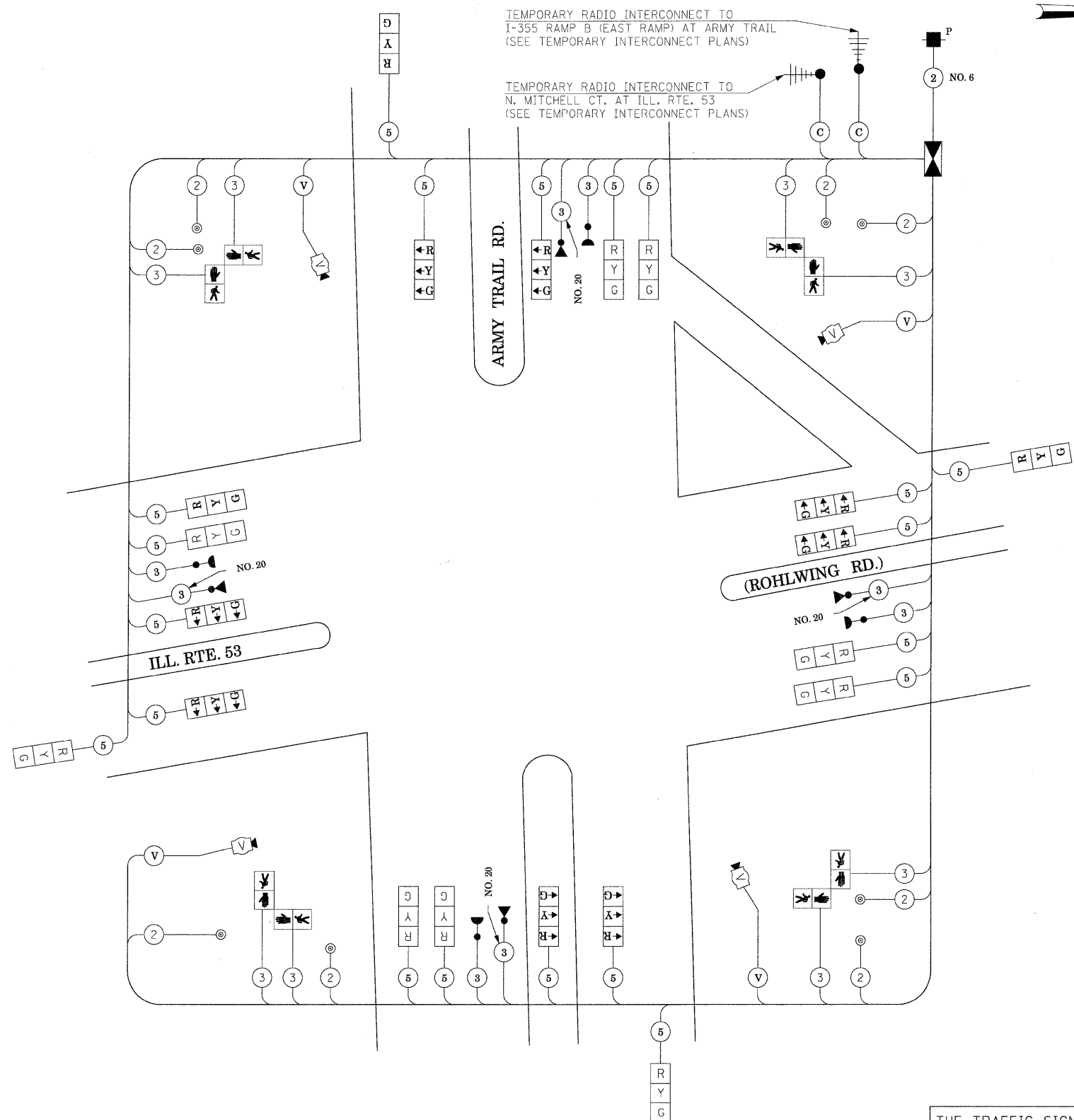


TEMPORARY PHASE DESIGNATION DIAGRAM
 STAGES: PRE-STAGE, S1-1, S1-2, S1-3, S2-1, AND AFTER PROPOSED ROADWAY GEOMETRICS ARE BUILT



PROPOSED EMERGENCY VEHICLE PREEMPTORS				
EMERGENCY VEHICLE PREEMPTOR	3	4	5	6
MOVEMENT	↕	↔	↕	↔

STAGES: PRE-STAGE, S1-1, S1-2, S1-3, S2-1, AND AFTER PROPOSED ROADWAY GEOMETRICS ARE BUILT



TEMPORARY CABLE PLAN
 (NOT TO SCALE)
 STAGES: PRE-STAGE, S1-1, S1-2, S1-3, S2-1, S2-2, S2-3, S3, AND AFTER PROPOSED ROADWAY GEOMETRICS ARE BUILT

THE TRAFFIC SIGNAL CONTROL EQUIPMENT FOR THIS PROJECT SHALL BE "ECONOLITE" TO MATCH THE EXISTING ADJACENT SYSTEM.

I.D.O.T. TRAFFIC SIGNAL INSTALLATION ELECTRICAL SERVICE REQUIREMENTS					TOTAL WATTAGE
TYPE	NO LAMPS	WATTAGE	OPERATION		
SIGNAL (RED)	20	135	17	0.50	170
(YELLOW)	20	135	25	0.25	125
(GREEN)	20	135	15	0.25	75
ARROW	135	12	0.10		
PEDESTRIAN SIGNAL	8	90	25	1.00	200
CONTROLLER	1	100	100	1.00	100
ILLUM. SIGN		25		0.05	
VIDEO SYSTEM	1	150		1.00	150
FLASHER				0.50	
ENERGY COSTS TO:			TOTAL =		820

ILLINOIS DEPARTMENT OF TRANSPORTATION
 201 WEST CENTER COURT
 SCHAUMBURG, ILLINOIS 60196-1096
 ENERGY SUPPLY CONTACT: CURTIS TOPPS
 PHONE: (630) 691-4356
 COMPANY: COMMONWEALTH EDISON