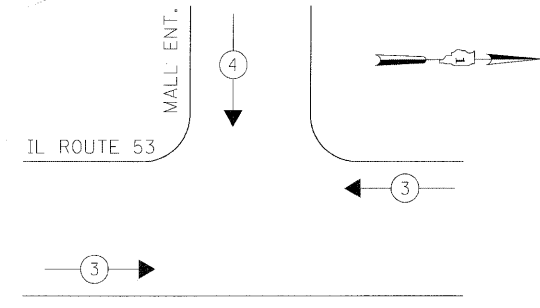


PHASE DESIGNATION DIAGRAM

STAGES: PRE-STAGE, STAGE 1, STAGE 2, STAGE 3, AND AFTER PROPOSED ROADWAY GEOMETRICS ARE BUILT

OVERLAP LETTER	PERMISSIVE PHASE	PROTECTED PHASE
B	4	5

EMERGENCY VEHICLE PREEMPTION SEQUENCE



PROPOSED EMERGENCY VEHICLE PREEMPTORS		
EMERGENCY VEHICLE PREEMPTOR	3	4
MOVEMENT	←	↓

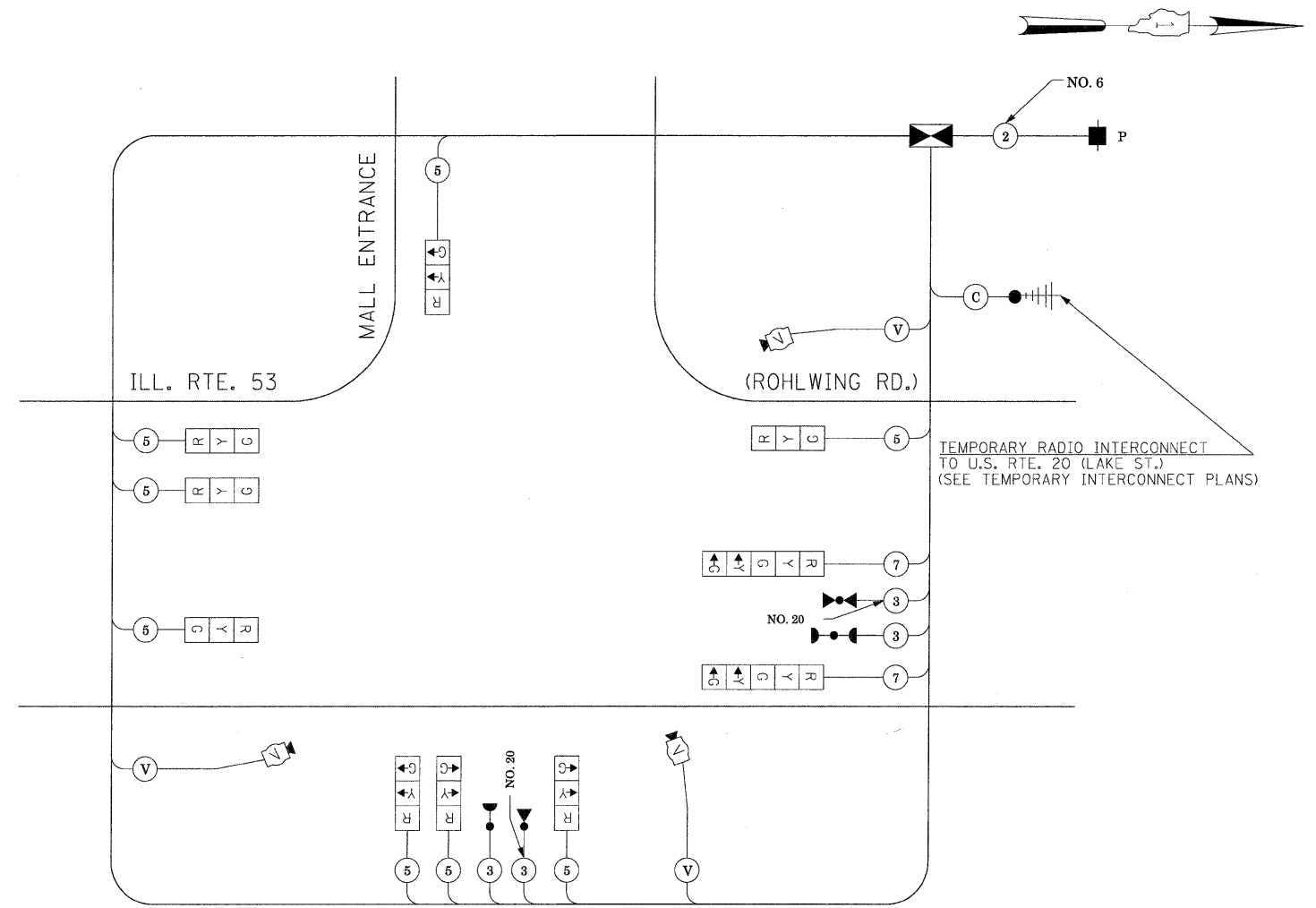
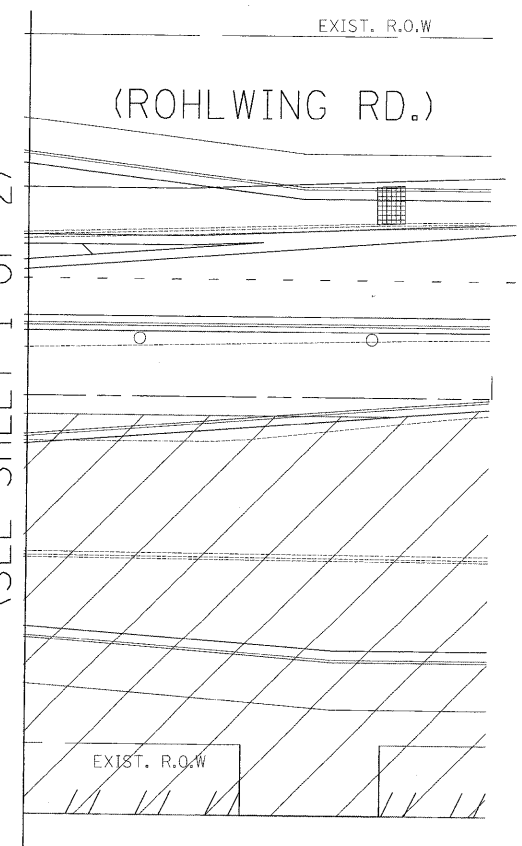
STAGES: PRE-STAGE, STAGE 1, STAGE 2, STAGE 3, AND AFTER PROPOSED ROADWAY GEOMETRICS ARE BUILT

I.D.O.T. TRAFFIC SIGNAL INSTALLATION ELECTRICAL SERVICE REQUIREMENTS					TOTAL WATTAGE
TYPE	NO LAMPS	WATTAGE		%OPERATION	
SIGNAL (RED)	10	135	17	0.50	85
(YELLOW)	10	135	25	0.25	62.5
(GREEN)	10	135	15	0.25	37.5
ARROW	4	135	12	0.10	4.8
PED. SIGNAL		90	25	1.00	
CONTROLLER	1	100	100	1.00	100
ILLUM. SIGN			25	0.05	
VIDEO SYSTEM	1	150		1.00	150
FLASHER				0.50	
ENERGY COSTS TO:				TOTAL =	439.8

ILLINOIS DEPARTMENT OF TRANSPORTATION
201 WEST CENTER COURT
SCHUMBERG, ILLINOIS 60196-1096

ENERGY SUPPLY CONTACT: CURTIS TOPPS
PHONE: (630) 691-4356
COMPANY: COMMONWEALTH EDISON

MATCH LINE STA. 122+00 (SEE SHEET 1 OF 2)



TEMPORARY CABLE PLAN

(NOT TO SCALE)
PRE-STAGE, STAGE 1, STAGE 2, STAGE 3, AND AFTER PROPOSED ROADWAY GEOMETRICS ARE BUILT

THE TRAFFIC SIGNAL CONTROL EQUIPMENT FOR THIS PROJECT SHALL BE "ECONOLITE" TO MATCH THE EXISTING ADJACENT SYSTEM.