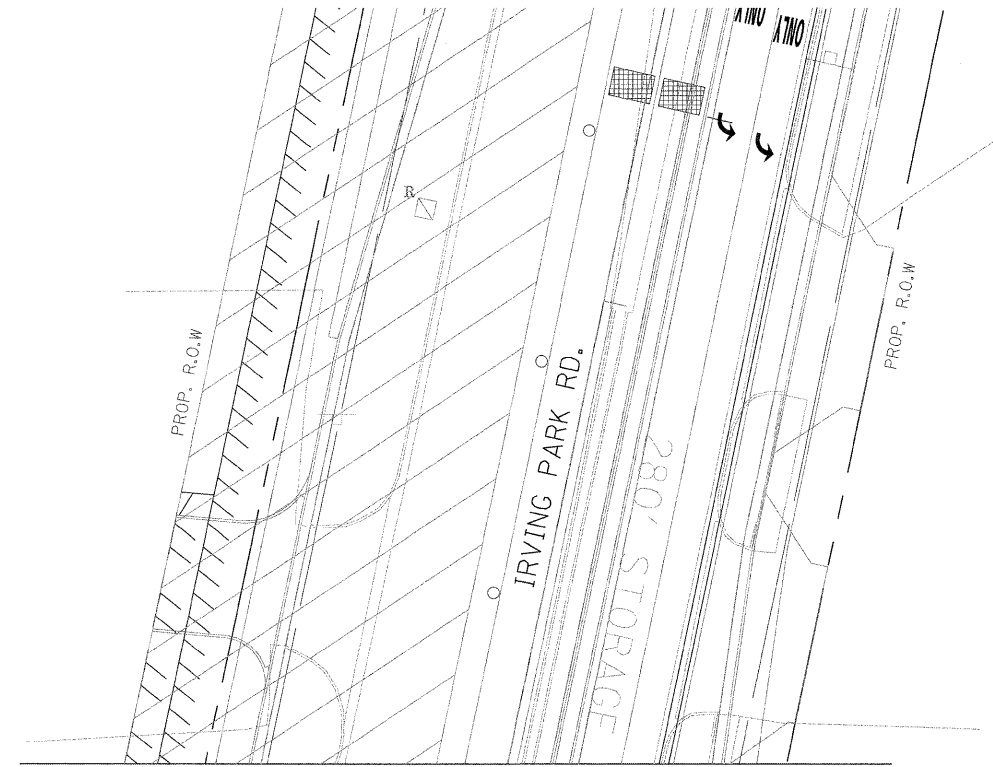
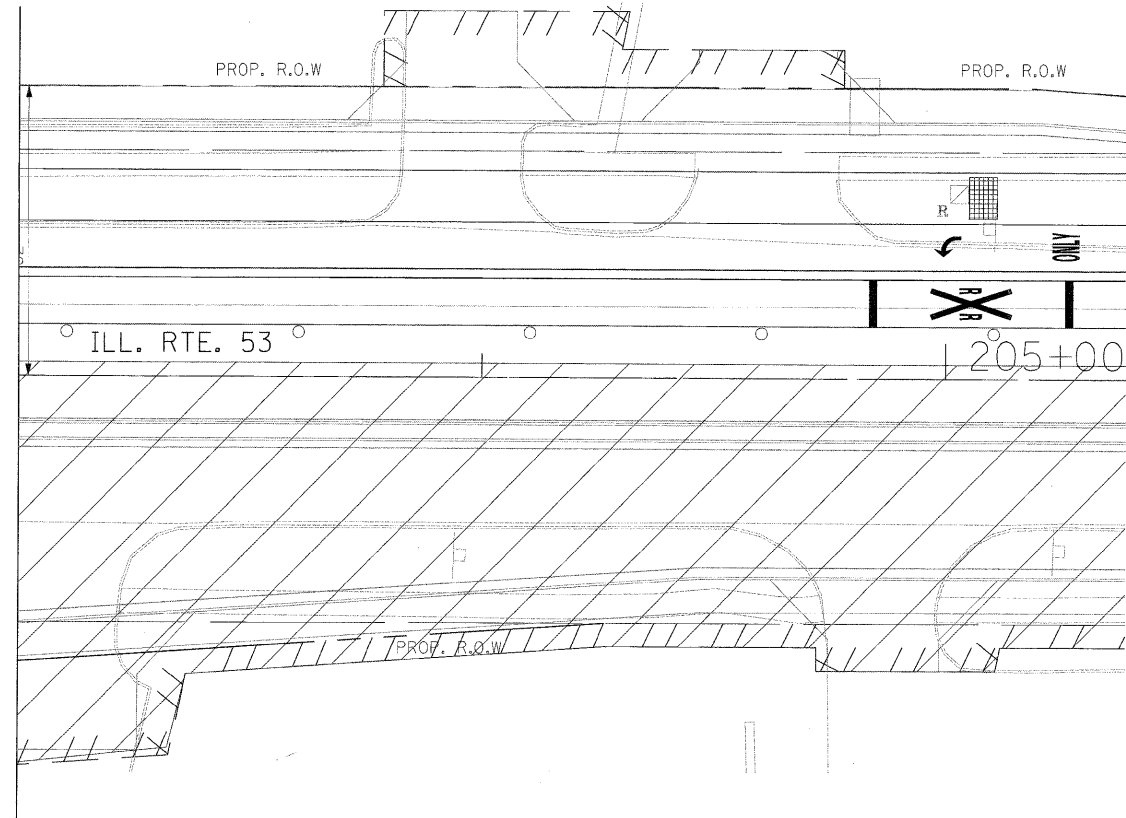


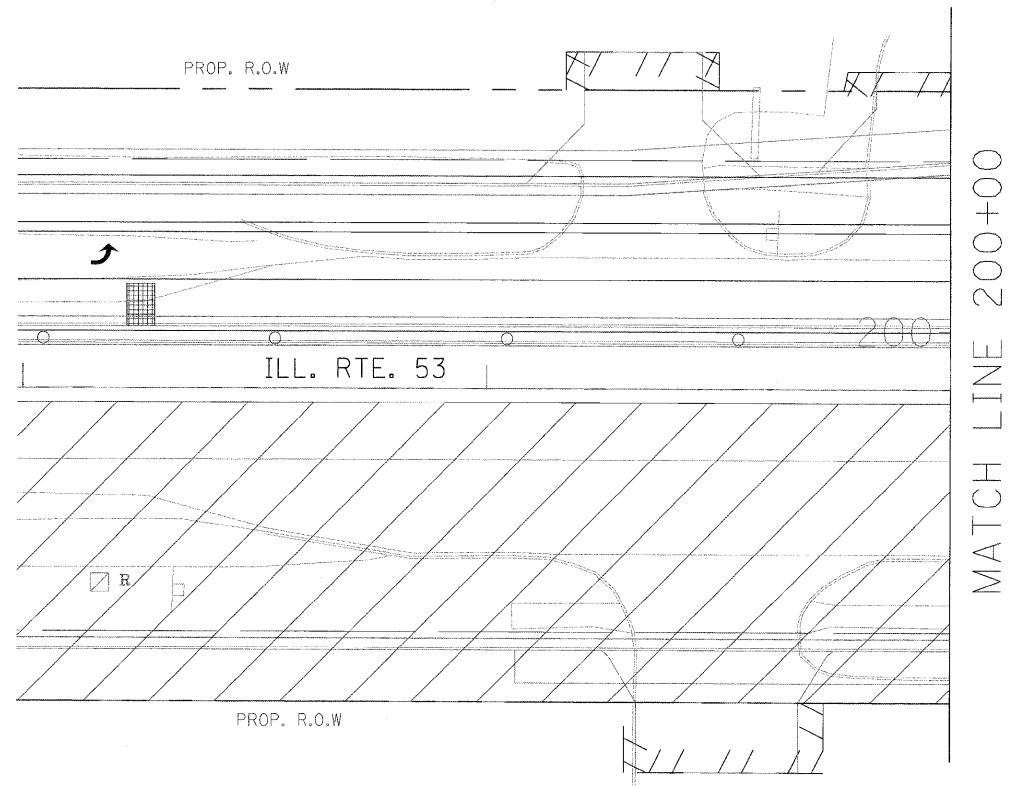


MATCH LINE 203+00



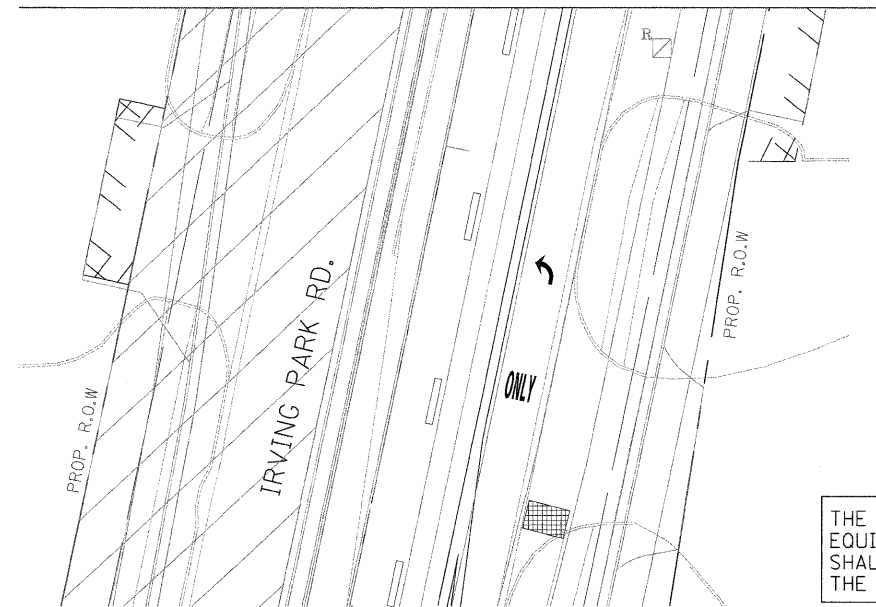
MATCH LINE "B"

NOTE: THE VIDEO DETECTION ZONES SHOWN ON THE PLANS ARE FOR PRE-CONSTRUCTION STAGE (EXISTING GEOMETRICS) AND SHALL BE REDEFINED FOR EACH CONSTRUCTION STAGE AS A PART OF "TEMPORARY TRAFFIC SIGNAL INSTALLATION" WORK.



MATCH LINE 200+00

MATCH LINE "A"



THE TRAFFIC SIGNAL CONTROL EQUIPMENT FOR THIS PROJECT SHALL BE "ECONOLITE" TO MATCH THE EXISTING ADJACENT SYSTEM.

FILE NAME = #FILEL#	USER NAME = #USER#	DESIGNED - PKG	REVISED -	<b>STATE OF ILLINOIS DEPARTMENT OF TRANSPORTATION</b>	<b>TEMPORARY TRAFFIC SIGNAL INSTALLATION AND REMOVAL PLAN ILLINOIS ROUTE 53 (ROHLWING RD.) AT ILL. RTE. 19 (IRVING PARK RD.) PRE STAGE AND STAGE 1 (SHEET 2 OF 5)</b>				F.A.P. RTE. 2578	SECTION 532B	COUNTY DuPage	TOTAL SHEETS 781	SHEET NO. 478
	PLOT SCALE = #SCALE#	DRAWN - MAA, EA	REVISED -		SCALE:	SHEET NO.	OF	SHEETS	STA.	TO STA.	CONTRACT NO. 60477		
	PLOT DATE = #DATE#	CHECKED - PKG, EA	REVISED -		FED. ROAD DIST. NO. -	ILLINOIS			FED. AID PROJECT				
		DATE - 5/10/2010	REVISED -										