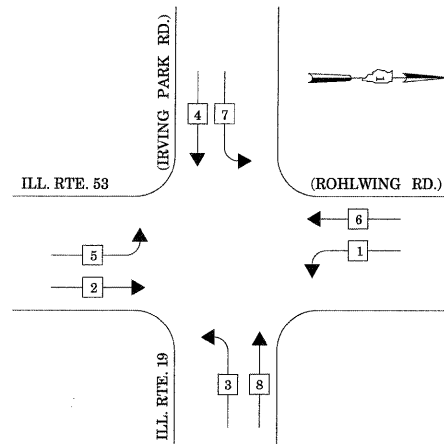


CONTROLLER SEQUENCE

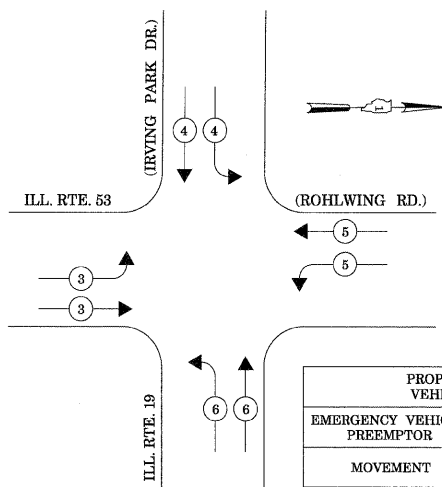


- LEGEND**
- ⊙ DUAL ENTRY PHASE
 - ⊠ SINGLE ENTRY PHASE
 - ◊ O.L. OVERLAP
 - ⊙ PEDESTRIAN PHASE
 - * NUMBER REFERS TO ASSOCIATED PHASE

TEMPORARY PHASE DESIGNATION DIAGRAM

STAGES: PRE-STAGE, S1-1, S1-3, S2-1, S2-3, S3, AND AFTER PROPOSED ROADWAY GEOMETRICS ARE BUILT

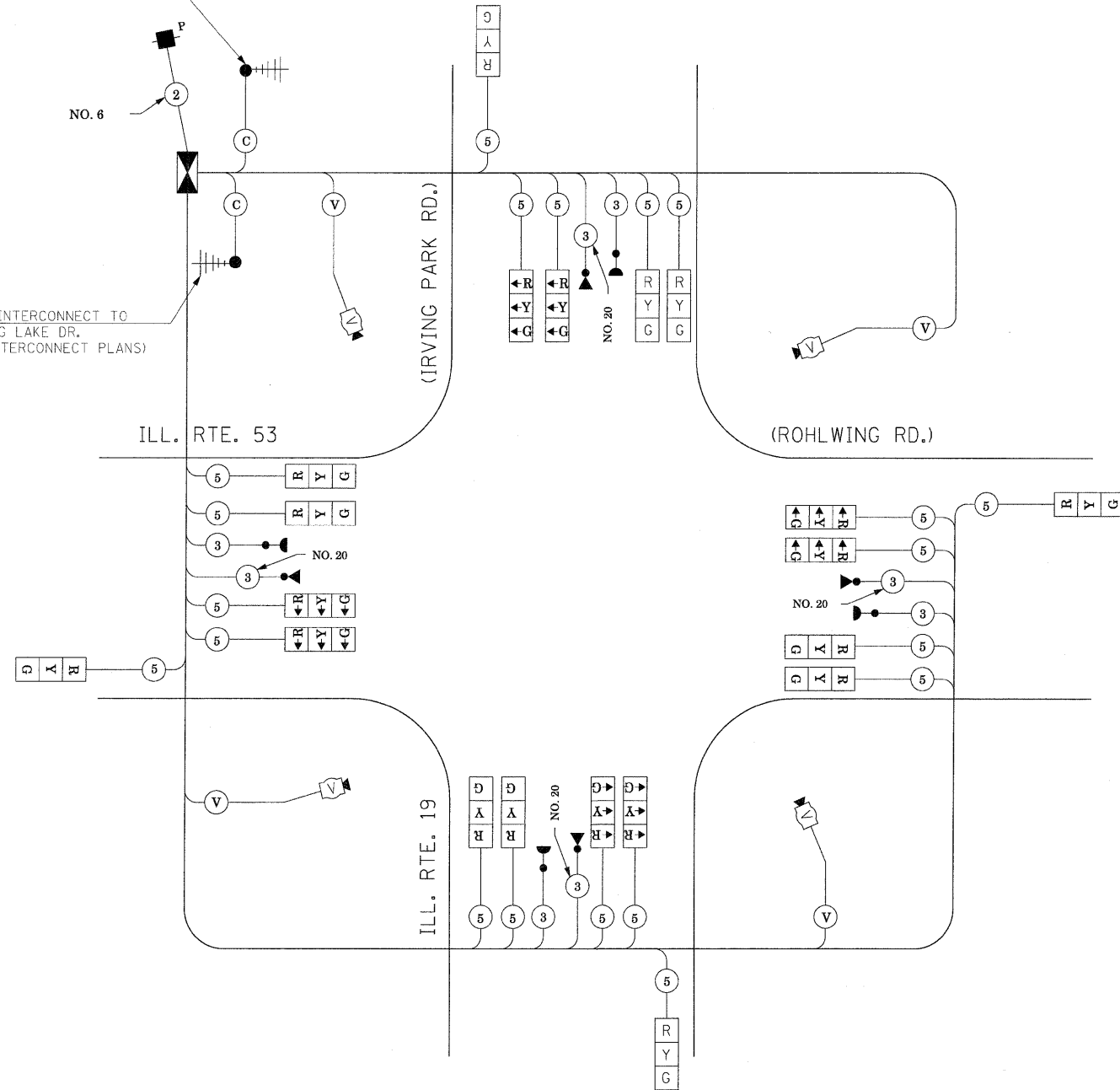
EMERGENCY VEHICLE PREEMPTION SEQUENCE



STAGES: PRE-STAGE, S1-1, S1-3, S2-1, S2-3, S3, AND AFTER PROPOSED ROADWAY GEOMETRICS ARE BUILT

TEMPORARY RADIO INTERCONNECT TO BRYN MAWR AVE. (SEE TEMPORARY INTERCONNECT PLANS)

TEMPORARY RADIO INTERCONNECT TO MEDINAH DR./SPRING LAKE DR. (SEE TEMPORARY INTERCONNECT PLANS)



TEMPORARY CABLE PLAN

(NOT TO SCALE)

STAGES: PRE-STAGE, S1-1, S1-2, S1-3, S2-1, S2-2, S2-3, S3, AND AFTER PROPOSED ROADWAY GEOMETRICS ARE BUILT

THE TRAFFIC SIGNAL CONTROL EQUIPMENT FOR THIS PROJECT SHALL BE "ECONOLITE" TO MATCH THE EXISTING ADJACENT SYSTEM.

I.D.O.T. TRAFFIC SIGNAL INSTALLATION ELECTRICAL SERVICE REQUIREMENTS						TOTAL WATTAGE
TYPE	NO LAMPS	WATTAGE		OPERATION		
SIGNAL (RED)	20	135	17	0.50		170
(YELLOW)	20	135	25	0.25		125
(GREEN)	20	135	15	0.25		75
ARROW		135	12	0.10		
PED. SIGNAL		90	25	1.00		
CONTROLLER	1	100	100	1.00		100
ILLUM. SIGN			25	0.05		
VIDEO SYSTEM	1	150		1.00		150
FLASHER				0.50		
ENERGY COSTS TO:					TOTAL =	620

ILLINOIS DEPARTMENT OF TRANSPORTATION
201 WEST CENTER COURT
SCHAUMBURG, ILLINOIS 60196-1096
ENERGY SUPPLY CONTACT: CURTIS TOPPS
PHONE: (630) 691-4356
COMPANY: COMMONWEALTH EDISON