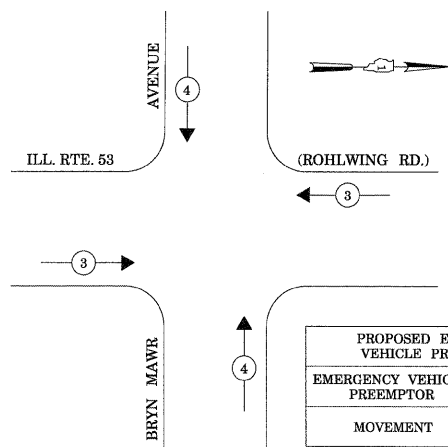


TEMPORARY PHASE DESIGNATION DIAGRAM

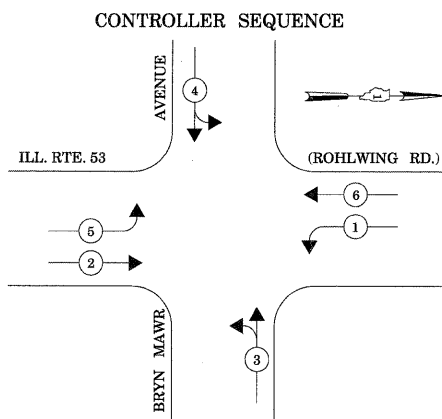
STAGES: PRE-STAGE, S1-1, S1-2, S1-3, S2-1, S2-2, S3,
AND AFTER PROPOSED GEOMETRICS ARE BUILT

EMERGENCY VEHICLE PREEMPTION SEQUENCE



STAGES: PRE-STAGE, S1-1, S1-2, S1-3, S2-1, S2-2, S2-3, S3,
AND AFTER PROPOSED GEOMETRICS ARE BUILT

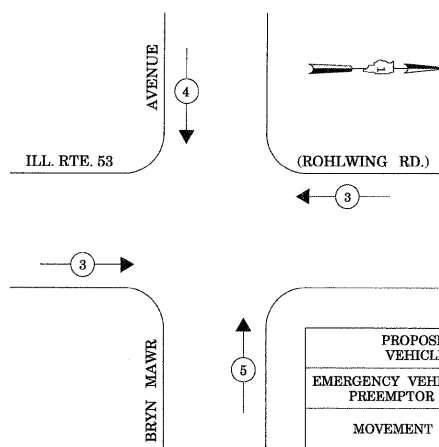
PROPOSED EMERGENCY VEHICLE PREEMPTORS		
EMERGENCY VEHICLE PREEMPTOR	3	4
MOVEMENT	←	↑



TEMPORARY PHASE DESIGNATION DIAGRAM

STAGES: STAGE 2 - SUBSTAGE 3

EMERGENCY VEHICLE PREEMPTION SEQUENCE



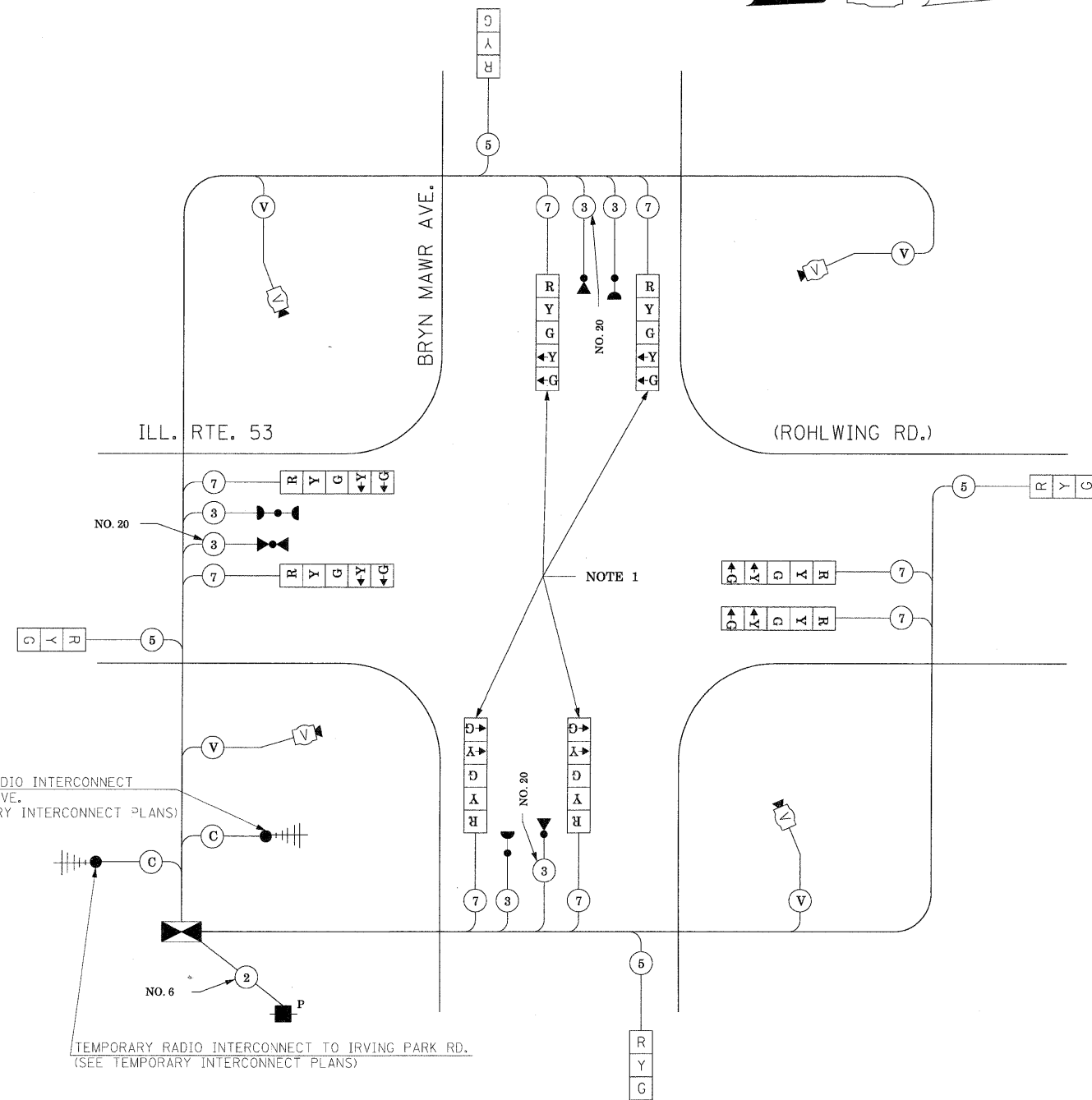
STAGES: STAGE 2 - SUBSTAGE 3

PROPOSED EMERGENCY VEHICLE PREEMPTORS			
EMERGENCY VEHICLE PREEMPTOR	3	4	5
MOVEMENT	←	↓	↑

NOTE 1: THE LEFT TURN YELLOW ARROW INDICATION SECTIONS FOR BRYN MAWR AVENUE SHALL BE DISCONNECTED AND BAGGED DURING CONSTRUCTION STAGE 2 - SUBSTAGE 3.

TEMPORARY RADIO INTERCONNECT TO ARDVORE AVE. (SEE TEMPORARY INTERCONNECT PLANS)

TEMPORARY RADIO INTERCONNECT TO IRVING PARK RD. (SEE TEMPORARY INTERCONNECT PLANS)



TEMPORARY CABLE PLAN

(NOT TO SCALE)

STAGES: PRE-STAGE, S1-1, S1-2, S1-3, S2-1, S2-2, S2-3, S3,
AND AFTER PROPOSED GEOMETRICS ARE BUILT

THE TRAFFIC SIGNAL CONTROL EQUIPMENT FOR THIS PROJECT SHALL BE "ECONOLITE" TO MATCH THE EXISTING ADJACENT SYSTEM.

I.D.O.T. TRAFFIC SIGNAL INSTALLATION ELECTRICAL SERVICE REQUIREMENTS					TOTAL WATTAGE
TYPE	NO LAMPS	WATTAGE		OPERATION	
		INCAND.	LED		
SIGNAL (RED)	12	135	17	0.50	102
(YELLOW)	12	135	25	0.25	75
(GREEN)	12	135	15	0.25	45
ARROW	16	135	12	0.10	19.2
PED. SIGNAL		90	25	1.00	
CONTROLLER	1	100	100	1.00	100
ILLUM. SIGN			25	0.05	
VIDEO SYSTEM	1	150		1.00	150
FLASHER				0.50	
ENERGY COSTS TO:				TOTAL =	491.2

ILLINOIS DEPARTMENT OF TRANSPORTATION
201 WEST CENTER COURT
SCHAUMBURG, ILLINOIS 60196-1096
ENERGY SUPPLY CONTACT: CURTIS TOPPS
PHONE: (630) 691-4356
COMPANY: COMMONWEALTH EDISON

FILE NAME =	USER NAME = #USER#	DESIGNED - PKG	REVISED -
#FILE#		DRAWN - MAA, EA	REVISED -
	PLOT SCALE = #SCALE#	CHECKED - PKG, EA	REVISED -
	PLOT DATE = #DATE#	DATE - 5/10/2010	REVISED -

STATE OF ILLINOIS
DEPARTMENT OF TRANSPORTATION

TEMPORARY CABLE PLAN, TEMPORARY PHASE DESIGNATION DIAGRAM TEMPORARY EMERGENCY VEHICLE PREEMPTION SEQUENCE ILLINOIS ROUTE 53 (ROHLWING RD.) AT BRYN MAWR AVE. PRE-STAGE, STAGE 1, STAGE 2, AND STAGE 3 (SHEET 4 OF 4)			
SCALE: NONE	SHEET NO. OF SHEETS	STA. TO STA.	

F.A.P. RTE. 2578	SECTION 532B	COUNTY DuPage	TOTAL SHEETS 781	SHEET NO. 491
FED. ROAD DIST. NO. - ILLINOIS FED. AID PROJECT			CONTRACT NO. 60477	