

SCHEDULE OF QUANTITIES		
QUANTITY	UNIT	ITEM
36	SQ FT	SIGN PANEL - TYPE 1
572	FOOT	CONDUIT IN TRENCH, 2" DIA., GALVANIZED STEEL
46	FOOT	CONDUIT IN TRENCH, 2 1/2" DIA., GALVANIZED STEEL
78	FOOT	CONDUIT IN TRENCH, 3" DIA., GALVANIZED STEEL
25	FOOT	CONDUIT IN TRENCH, 4" DIA., GALVANIZED STEEL
144	FOOT	CONDUIT PUSHED, 2" DIA., GALVANIZED STEEL
500	FOOT	CONDUIT PUSHED, 4" DIA., GALVANIZED STEEL
4	EACH	HANDHOLE
2	EACH	HEAVY-DUTY HANDHOLE
2	EACH	DOUBLE HANDHOLE
660	FOOT	TRENCH AND BACKFILL FOR ELECTRICAL WORK
1	EACH	FULL-ACTUATED CONTROLLER AND TYPE IV CABINET, SPECIAL
1	EACH	TRANSCEIVER-FIBER OPTIC
1480	FOOT	ELECTRIC CABLE IN CONDUIT, SIGNAL NO. 14 2C
1879	FOOT	ELECTRIC CABLE IN CONDUIT, SIGNAL NO. 14 3C
1788	FOOT	ELECTRIC CABLE IN CONDUIT, SIGNAL NO. 14 5C
1750	FOOT	ELECTRIC CABLE IN CONDUIT, SIGNAL NO. 14 7C
1954	FOOT	ELECTRIC CABLE IN CONDUIT, LEAD-IN, NO. 14 1 PAIR
76	FOOT	ELECTRIC CABLE IN CONDUIT, SERVICE, NO. 6 2C
4	EACH	TRAFFIC SIGNAL POST, GALVANIZED STEEL 16 FT.
1	EACH	STEEL MAST ARM ASSEMBLY AND POLE, 42 FT.
1	EACH	STEEL MAST ARM ASSEMBLY AND POLE, 44 FT.
2	EACH	STEEL MAST ARM ASSEMBLY AND POLE, 48 FT.
16	FOOT	CONCRETE FOUNDATION, TYPE A
4	FOOT	CONCRETE FOUNDATION, TYPE C
60	FOOT	CONCRETE FOUNDATION, TYPE E 36-INCH DIAMETER
6	EACH	SIGNAL HEAD, LED, 1-FACE, 3-SECTION, MAST ARM MOUNTED
2	EACH	SIGNAL HEAD, LED, 1-FACE, 5-SECTION, BRACKET MOUNTED
4	EACH	SIGNAL HEAD, LED, 1-FACE, 5-SECTION, MAST ARM MOUNTED
2	EACH	SIGNAL HEAD, LED, 2-FACE, 1-3 SECTION, 1-5 SECTION, BRACKET MOUNTED
4	EACH	PEDESTRIAN SIGNAL HEAD, LED, 1-FACE, BRACKET MOUNTED WITH COUNTDOWN TIMER
2	EACH	PEDESTRIAN SIGNAL HEAD, LED, 2-FACE, BRACKET MOUNTED WITH COUNTDOWN TIMER
10	EACH	TRAFFIC SIGNAL BACKPLATE, LOUVERED, ALUMINUM
8	EACH	INDUCTIVE LOOP DETECTOR
66	FOOT	DETECTOR LOOP, TYPE 1
8	EACH	PEDESTRIAN PUSH-BUTTON
1	EACH	TEMPORARY TRAFFIC SIGNAL INSTALLATION
2	EACH	RELOCATE EXISTING EMERGENCY VEHICLE PRIORITY SYSTEM, DETECTOR UNIT
1	EACH	RELOCATE EXISTING EMERGENCY VEHICLE PRIORITY SYSTEM, PHASING UNIT
1	EACH	REMOVE EXISTING TRAFFIC SIGNAL EQUIPMENT
8	EACH	REMOVE EXISTING HANDHOLE
9	EACH	REMOVE EXISTING CONCRETE FOUNDATION
1192	FOOT	PREFORMED DETECTOR LOOP
1	EACH	TEMPORARY TRAFFIC SIGNAL TIMING
1	EACH	SERVICE INSTALLATION - POLE MOUNTED
1	EACH	UNINTERRUPTIBLE POWER SUPPLY
854	FOOT	ELECTRIC CABLE IN CONDUIT, GROUNDING, NO. 6 1C
343	FOOT	ELECTRIC CABLE IN CONDUIT NO. 20 3/C, TWISTED, SHIELDED

• 100% COST TO VILLAGE OF ITASCA

THE END OF THE TRACER CABLE SHALL BE CONTINUOUS AND EXTEND INTO THE CONTROLLER CABINET.

INTERCONNECT TO BRYN MAWR AVE.

TRACER CABLE

NO. 6

4-1/C, NO. 6 (GREEN)

NO. 6

NO. 6

NO. 6

NO. 6

NO. 6

NO. 6

NO. 6

NO. 6

NO. 6

NO. 6

NO. 6

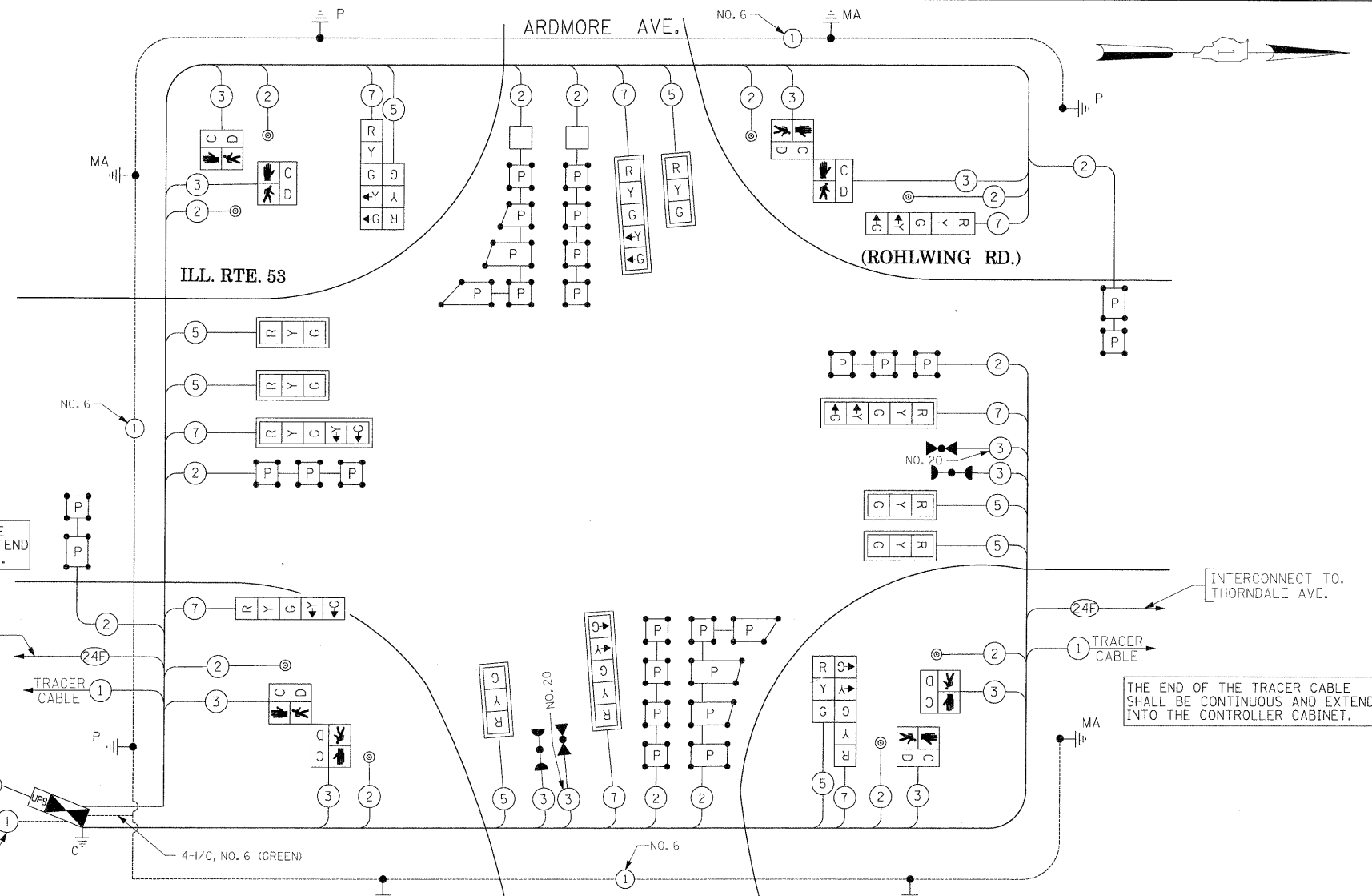
NO. 6

NO. 6

NO. 6

NO. 6

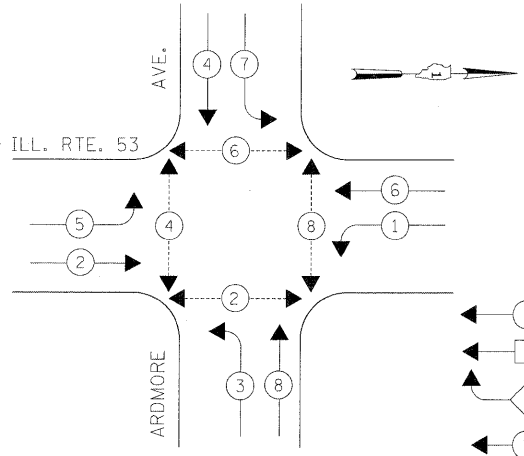
NO. 6



CABLE PLAN  
(NOT TO SCALE)

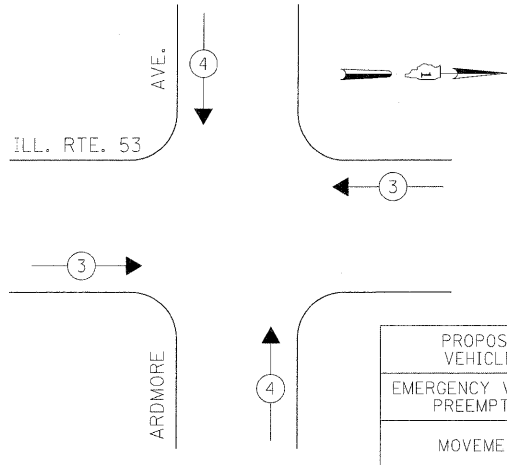
THE TRAFFIC SIGNAL CONTROL EQUIPMENT FOR THIS PROJECT SHALL BE "ECONOLITE" TO MATCH THE EXISTING ADJACENT SYSTEM.

CONTROLLER SEQUENCE



PHASE DESIGNATION DIAGRAM

EMERGENCY VEHICLE PREEMPTION SEQUENCE



THE CONTRACTOR SHALL RELOCATE THE EXISTING EMERGENCY VEHICLE PRIORITY SYSTEM EQUIPMENTS TO THE NEW TRAFFIC SIGNAL INSTALLATION AT ILL. RTE. 53 (ROHLWING RD.) & ARDMORE AVE.

I.D.O.T. TRAFFIC SIGNAL INSTALLATION ELECTRICAL SERVICE REQUIREMENTS					TOTAL WATTAGE	
TYPE	NO LAMPS	WATTAGE		OPERATION		
SIGNAL (RED)	16	135	17	0.50	136	
	(YELLOW)	16	135	25	0.25	100
	(GREEN)	16	135	15	0.25	80
ARROW	16	135	12	0.10	19.2	
PED. SIGNAL	8	90	25	1.00	200	
CONTROLLER	1	100	100	1.00	100	
ILLUM. SIGN			25	0.05		
FLASHER				0.50		
ENERGY COSTS TO:				TOTAL =	615.2	

ILLINOIS DEPARTMENT OF TRANSPORTATION  
201 WEST CENTER COURT  
SCHAUMBURG, ILLINOIS 60196-1096

ENERGY SUPPLY CONTACT: CURTIS TOPPS  
PHONE: (630) 691-4356  
COMPANY: COMMONWEALTH EDISON