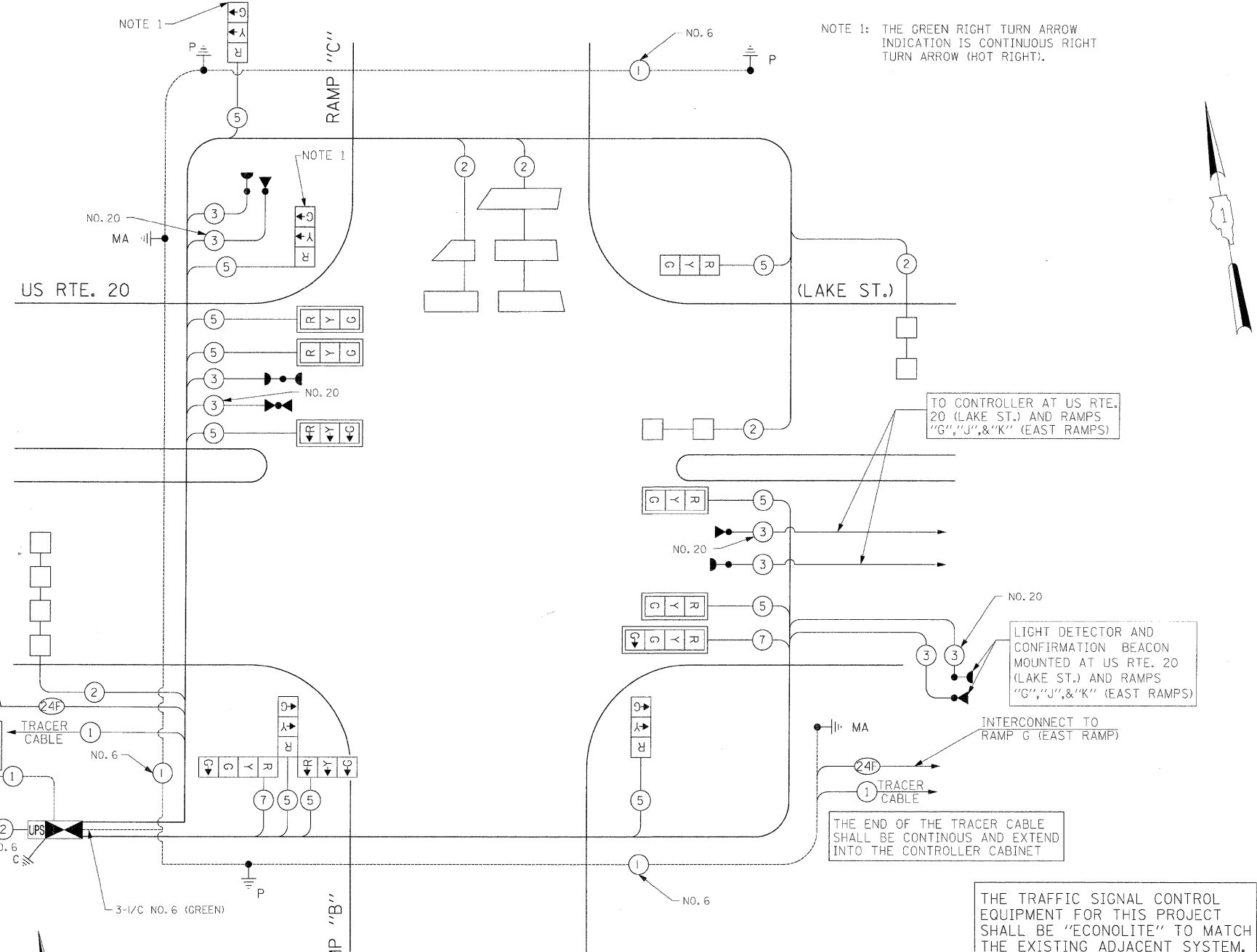


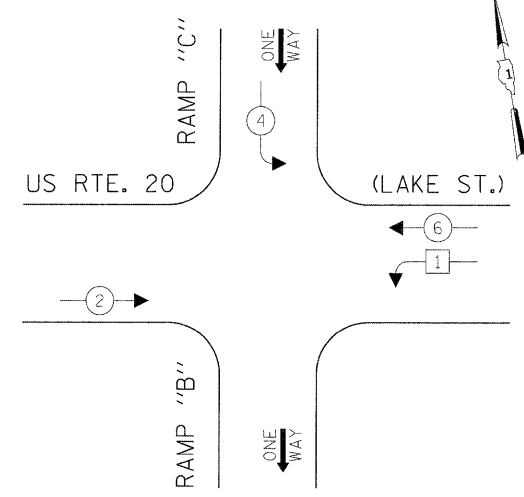
SCHEDULE OF QUANTITIES

QUANTITY	UNIT	ITEM
10	SQ FT	SIGN PANEL - TYPE 1
569	FOOT	CONDUIT IN TRENCH, 2" DIA., GALVANIZED STEEL
6	FOOT	CONDUIT IN TRENCH, 2 1/2" DIA., GALVANIZED STEEL
15	FOOT	CONDUIT IN TRENCH, 3" DIA., GALVANIZED STEEL
25	FOOT	CONDUIT IN TRENCH, 4" DIA., GALVANIZED STEEL
70	FOOT	CONDUIT PUSHED, 2" DIA., GALVANIZED STEEL
75	FOOT	CONDUIT PUSHED, 2 1/2" DIA., GALVANIZED STEEL
302	FOOT	CONDUIT PUSHED, 4" DIA., GALVANIZED STEEL
5	EACH	HANDHOLE
1	EACH	HEAVY-DUTY HANDHOLE
1	EACH	DOUBLE HANDHOLE
584	FOOT	TRENCH AND BACKFILL FOR ELECTRICAL WORK
1	EACH	FULL-ACTUATED CONTROLLER AND TYPE IV CABINET, SPECIAL
1	EACH	TRANSCEIVER-FIBER OPTIC
1415	FOOT	ELECTRIC CABLE IN CONDUIT, SIGNAL NO. 14 3C
2140	FOOT	ELECTRIC CABLE IN CONDUIT, SIGNAL NO. 14 5C
251	FOOT	ELECTRIC CABLE IN CONDUIT, SIGNAL NO. 14 7C
1656	FOOT	ELECTRIC CABLE IN CONDUIT, LEAD-IN, NO. 14 1 PAIR
94	FOOT	ELECTRIC CABLE IN CONDUIT, SERVICE, NO. 6 2C
2	EACH	TRAFFIC SIGNAL POST, GALVANIZED STEEL 14 FT.
1	EACH	TRAFFIC SIGNAL POST, GALVANIZED STEEL 15 FT.
1	EACH	STEEL MAST ARM ASSEMBLY AND POLE, 34 FT.
1	EACH	STEEL MAST ARM ASSEMBLY AND POLE, 38 FT.
12	FOOT	CONCRETE FOUNDATION, TYPE A
4	FOOT	CONCRETE FOUNDATION, TYPE C
30	FOOT	CONCRETE FOUNDATION, TYPE E 36-INCH DIAMETER
5	EACH	SIGNAL HEAD, LED, 1-FACE, 3-SECTION, MAST ARM MOUNTED
4	EACH	SIGNAL HEAD, LED, 1-FACE, 3-SECTION, BRACKET MOUNTED
1	EACH	SIGNAL HEAD, LED, 1-FACE, 4-SECTION, MAST ARM MOUNTED
1	EACH	SIGNAL HEAD, LED, 3-FACE, 2-3 SECTION, 1-4 SECTION, BRACKET MOUNTED
6	EACH	TRAFFIC SIGNAL BACKPLATE, LOUVERED, ALUMINUM
5	EACH	INDUCTIVE LOOP DETECTOR
562	FOOT	DETECTOR LOOP, TYPE 1
3	EACH	LIGHT DETECTOR
1	EACH	LIGHT DETECTOR AMPLIFIER
1	EACH	TEMPORARY TRAFFIC SIGNAL INSTALLATION
1	EACH	REMOVE EXISTING TRAFFIC SIGNAL EQUIPMENT
7	EACH	REMOVE EXISTING HANDHOLE
7	EACH	REMOVE EXISTING CONCRETE FOUNDATION
1	EACH	TEMPORARY TRAFFIC SIGNAL TIMING
1	EACH	SERVICE INSTALLATION - POLE MOUNTED
1	EACH	UNINTERRUPTIBLE POWER SUPPLY
601	FOOT	ELECTRIC CABLE IN CONDUIT, GROUNDING, NO. 6 1C
1415	FOOT	ELECTRIC CABLE IN CONDUIT NO. 20 3/C, TWISTED, SHIELDED

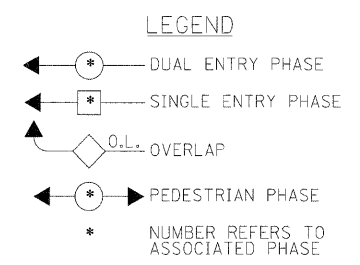
* 100% COST TO VILLAGE OF ADDISON



CONTROLLER SEQUENCE

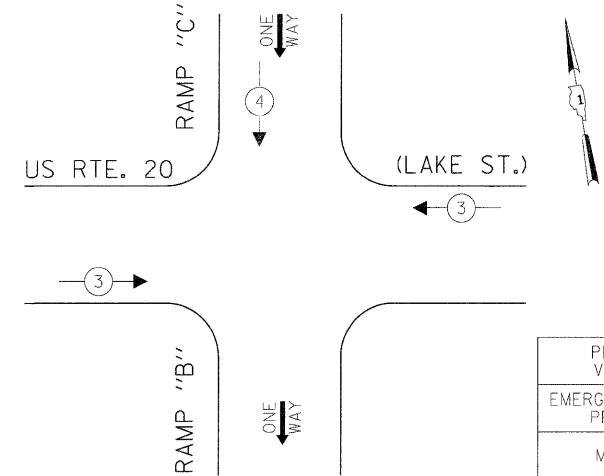


PHASE DESIGNATION DIAGRAM



CABLE PLAN (NOT TO SCALE)

EMERGENCY VEHICLE PREEMPTION SEQUENCE



PROPOSED EMERGENCY VEHICLE PREEMPTORS			
EMERGENCY VEHICLE PREEMPTOR	3	4	
MOVEMENT	←	→	↓

I.D.O.T. TRAFFIC SIGNAL INSTALLATION ELECTRICAL SERVICE REQUIREMENTS					TOTAL WATTAGE
TYPE	NO LAMPS	WATTAGE		%OPERATION	
		INCAND.	LED		
SIGNAL (RED)	11	135	17	0.50	93.50
(YELLOW)	11	135	25	0.25	68.75
(GREEN)	13	135	15	0.25	48.75
ARROW		135	12	0.10	
PED. SIGNAL		90	25	1.00	
CONTROLLER	1	100	100	1.00	100
ILLUM. SIGN				0.05	
HOT GREEN RIGHT ARROW	2		12	1.00	24.00
FLASHER				0.50	
ENERGY COSTS TO:					TOTAL = 335.00

ILLINOIS DEPARTMENT OF TRANSPORTATION
201 WEST CENTER COURT
SCHAUMBURG, ILLINOIS 60196-1096

ENERGY SUPPLY CONTACT: ELLIE SARALLO
PHONE: (630) 424 5124
COMPANY: COMMONWEALTH EDISON

FILE NAME =	USER NAME = #USER#	DESIGNED - PKG	REVISED -
#FILE#		DRAWN - MAA, EA	REVISED -
		CHECKED - PKG, EA	REVISED -
		DATE - 5/10/2010	REVISED -

STATE OF ILLINOIS
DEPARTMENT OF TRANSPORTATION

CABLE PLAN, PHASE DESIGNATION DIAGRAM, EMERGENCY VEHICLE PREEMPTION SEQUENCE, SCHEDULE OF QUANTITIES
US RTE. 20 AT RAMPS "B" AND "C" (WEST RAMPS) (SHEET 2 OF 2)

F.A.P. RTE.	SECTION	COUNTY	TOTAL SHEETS	SHEET NO.
2578	532B	DuPage	781	522
FED. ROAD DIST. NO. - ILLINOIS FED. AID PROJECT			CONTRACT NO. 60477	