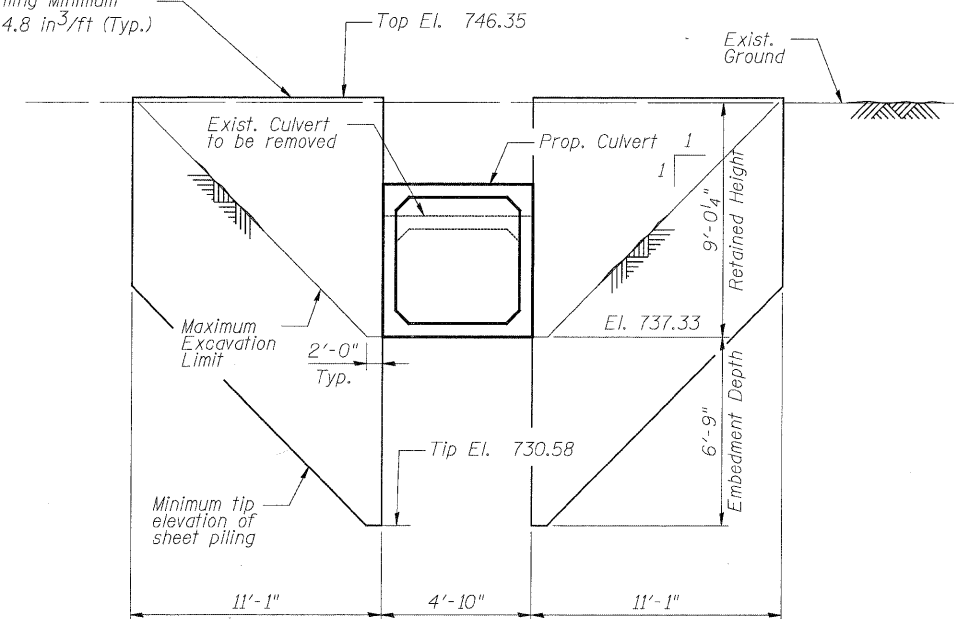


BLOOM COMPANIES, LLC.		BORING LOG		CHICAGO, ILLINOIS					
JOB NO: BMS-1272 CLIENT: ILLINOIS DEPARTMENT OF TRANSPORTATION		BORING NO: C1-1		STATION: 46+65					
PROJECT: IL-53 Improvements - Thorndale Avenue to Army Trail Road		STATION: 46+65		OFFSET: 41' RT					
LOCATION: Culvert No. 1		SURF ELEV: 744.4							
BORING RIG & METHOD: Diedrich D-50 w/Hollow Stem Augers									
DEPTH	SAMPLE FROM - TO	ELEV.	SOIL DESCRIPTION	REC.	BLOWS/FT	QU	STRAIN %	WATER CONTENT %	
0.0-1.0		742.9	14" Bituminous Concrete						
1.0-2.5			4" Sand A-1-a	16	Auger 12 10-8	8.8	15	18.8	
3.5-5.0			FILL: Gr to Black Silty Clay A-7-6, trace Gravel, roots and wood chips	13	3 2-4	1.2	15	22.0	
6.0-7.5				14	2 4-5	2.1	15	25.6	
8.5-10.0		739.9		15	2 2-3	1.0	15	22.0	
11.0-12.5		731.4	Soft Br Clay A-6, trace Gravel, 1" Sand Seam noted	17	2 4-6	0.4	15	19.3	
13.5-15.0				15	4 7-11	2.1	15	12.3	
16.0-17.5			Very Stiff to Stiff Gr Silty Clay Loam A-6, trace Gravel	5	4 8-5	(2.0)		14.0	
18.5-20.0		724.4		10	3 18-12	1.7	15	13.3	
Boring terminated @ 20'									
REMARKS: Automatic Hammer Used.						() Denotes Calibrated Penetrometer Estimate			
WATER DRY FT. ELEV.		DURING DRILLING		CORE SIZE		IN. DATE: Jan 5, 10			
WATER Caved @ 16.5 FT. ELEV.		AT COMPLETION		CASING LENGTH		FT. DRILLER: Shimon			
WATER FT. ELEV.		AFTER HRS.		CASING DIAMETER		IN. INSPECTOR: Kuzel			

BLOOM COMPANIES, LLC.		BORING LOG		CHICAGO, ILLINOIS					
JOB NO: BMS-1272 CLIENT: ILLINOIS DEPARTMENT OF TRANSPORTATION		BORING NO: C1-2		STATION: 46+74					
PROJECT: IL-53 Improvements - Thorndale Avenue to Army Trail Road		STATION: 46+74		OFFSET: 36' LT					
LOCATION: Culvert No. 1		SURF ELEV: 744.8							
BORING RIG & METHOD: Diedrich D-50 w/Hollow Stem Augers									
DEPTH	SAMPLE FROM - TO	ELEV.	SOIL DESCRIPTION	REC.	BLOWS/FT	QU	STRAIN %	WATER CONTENT %	
0.0-1.0		744.3	6" Gr Silty Clay Topsoil						
1.0-2.5		741.8	FILL: Br Clay Loam A-6, trace roots	15	Auger 2 4-5	4.1	15	12.5	
3.5-5.0		739.3	FILL: Br to Gr Silty Clay A-6, trace wood chips	13	3 3-3	2.1	15	21.4	
6.0-7.5		736.8	Probable FILL: Br to Gr Clay A-6	14	3 3-4	1.2	15	24.3	
8.5-10.0				17	2 3-3	1.2	15	17.4	
11.0-12.5		731.8	Stiff to Very Stiff Br to Gr Clay A-6, trace Gravel	10	2 4-5	2.5	15	19.3	
13.5-15.0				16	2 2-4	1.7	15	15.5	
16.0-17.5			Stiff Gr Silty Clay Loam A-6, trace Gravel	17	2 3-5	1.4	15	16.9	
18.5-20.0		724.8		17	3 3-5	1.7	15	15.1	
Boring terminated @ 20'									
REMARKS: Automatic Hammer Used.						() Denotes Calibrated Penetrometer Estimate			
WATER DRY FT. ELEV.		DURING DRILLING		CORE SIZE		IN. DATE: Jan 5, 10			
WATER Caved @ 14.5 FT. ELEV.		AT COMPLETION		CASING LENGTH		FT. DRILLER: Shimon			
WATER FT. ELEV.		AFTER HRS.		CASING DIAMETER		IN. INSPECTOR: Kuzel			

Temporary Sheet Piling Minimum Section Modulus = 4.8 in³/ft (Typ.)



TEMPORARY SHEET PILING ELEV.

DESIGNED	- A. Durbak
CHECKED	- R. DiGiulio
DRAWN	- A. Durbak
CHECKED	- R. DiGiulio

SOIL BORINGS
ILLINOIS ROUTE 53
FAU 2578 SECTION 532B-1
DUPAGE COUNTY STATION 46+81.03


PATRICK ENGINEERING INC.
 4970 VARSITY DRIVE
 LISLE, IL 60532
 patrickengineering.com

SHEET NO. S3 OF S25	F.A.P RTE. 2578	SECTION 532B	COUNTY DUPAGE	TOTAL SHEETS 781	SHEET NO. 582
	CONTRACT NO. 60477				
12/3/2010		ILLINOIS FED. AID PROJECT			