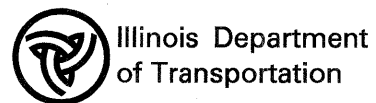
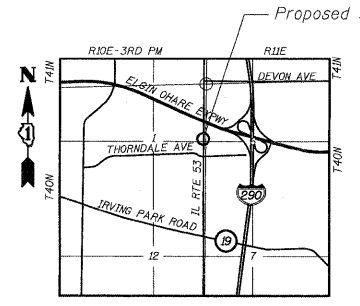
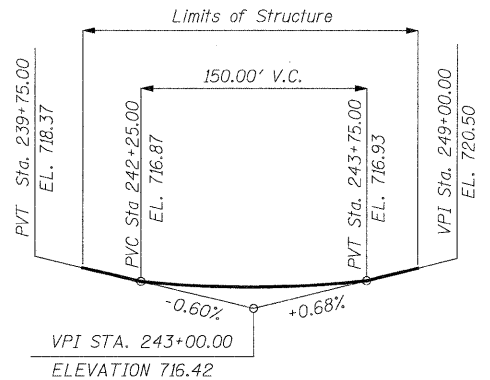
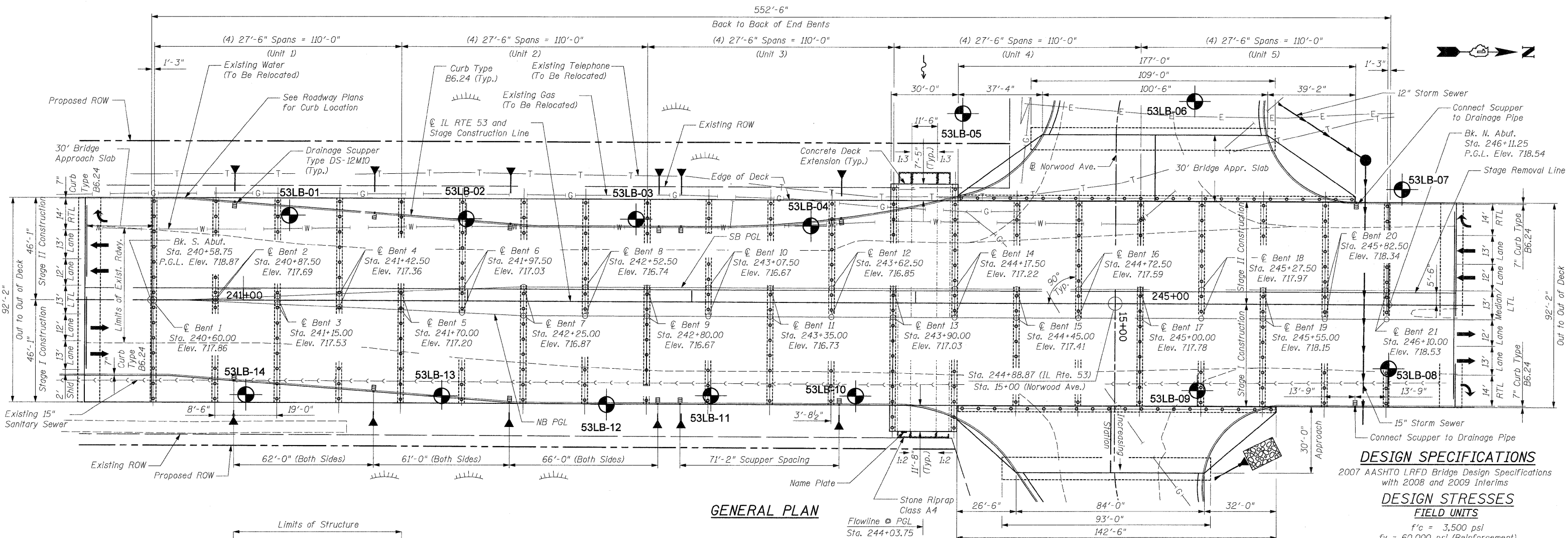
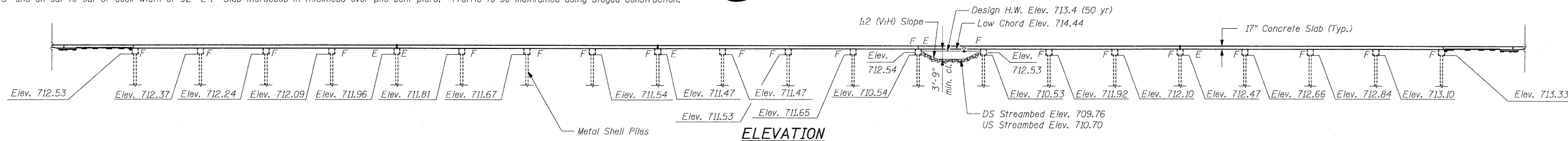


Benchmark: BM #22 Elev. 716.50 rebar with cap at Sta. 245+33.52, 37.88' Rt.



Existing Structure: None. Proposed Structure number is 022-0012. Each unit is four spans of 27'-6" for a back-to-back of abutments length of 552'-6" and an out-to-out of deck width of 92'-2". Slab increases in thickness over pile bent piers. Traffic to be maintained using staged construction.



**GENERAL PLAN**

**DESIGN SPECIFICATIONS**  
2007 AASHTO LRFD Bridge Design Specifications with 2008 and 2009 Interims  
**DESIGN STRESSES**  
**FIELD UNITS**  
f'c = 3,500 psi  
fy = 60,000 psi (Reinforcement)

**SEISMIC DATA**

Seismic Performance Zone (SPZ) = 1  
Design Spectral Acceleration at 1.0 sec. (S<sub>D1</sub>) = 0.085g  
Design Spectral Acceleration at 0.2 sec. (S<sub>D5</sub>) = 0.150g  
Soil Site Class = D

**LOADING HL-93**

Allow 50#/sq. ft. for future wearing surface.

**GENERAL PLAN & ELEVATION**  
**DRY LAND BRIDGE**  
**ILLINOIS ROUTE 53**  
**F.A.U. RTE 2578 - SEC. 532B**  
**DUPAGE COUNTY**  
**STATION 244+88.87**  
**STRUCTURE NO. 022-0012**

DESIGNED = J. Vermillion
CHECKED = J. Refvik
DRAWN = J. Vermillion
CHECKED = J. Refvik

PATRICK ENGINEERING, INC.



**APPROVED**  
FOR STRUCTURAL ADEQUACY ONLY  
*Roger Di Giulio*  
ROGER DI GIULIO, S.E.  
NO. 5197  
EXP. DATE: 11/30/10  
APPLY TO DRAWINGS SA1-SA37

**APPROVED**  
FOR STRUCTURAL ADEQUACY ONLY

*Roger Di Giulio*  
ENGINEER OF BRIDGES AND STRUCTURES



PATRICK ENGINEERING INC.  
4970 VARSITY DRIVE  
LISLE, IL 60532  
patrickengineering.com

SHEET NO. SA1 OF SA37	F.A.P RTE. 2578	SECTION 532B	COUNTY DUPAGE	TOTAL SHEETS 781	SHEET NO. 605
	CONTRACT NO. 60477				
12/3/2010		ILLINOIS FED. AID PROJECT			