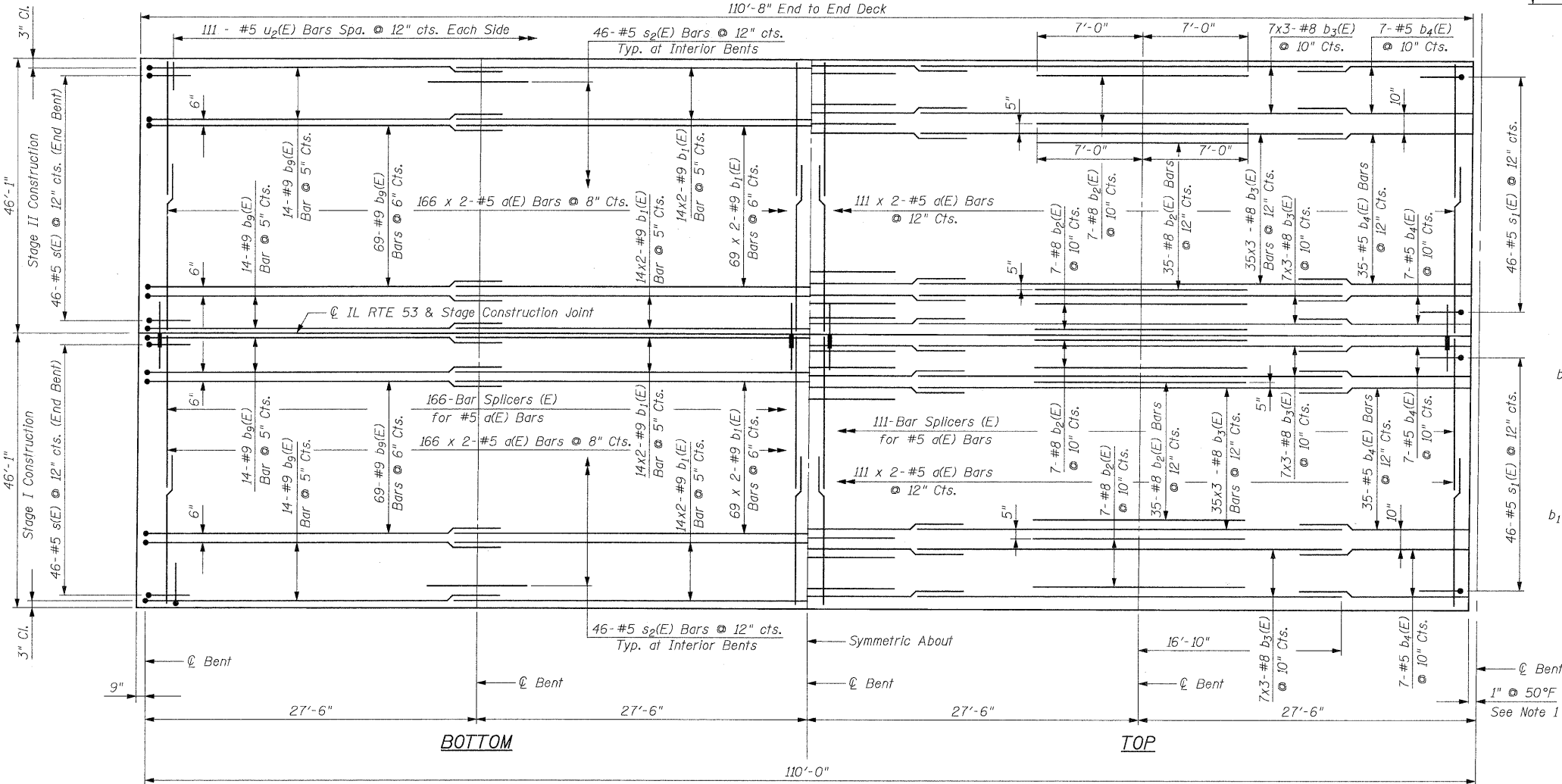


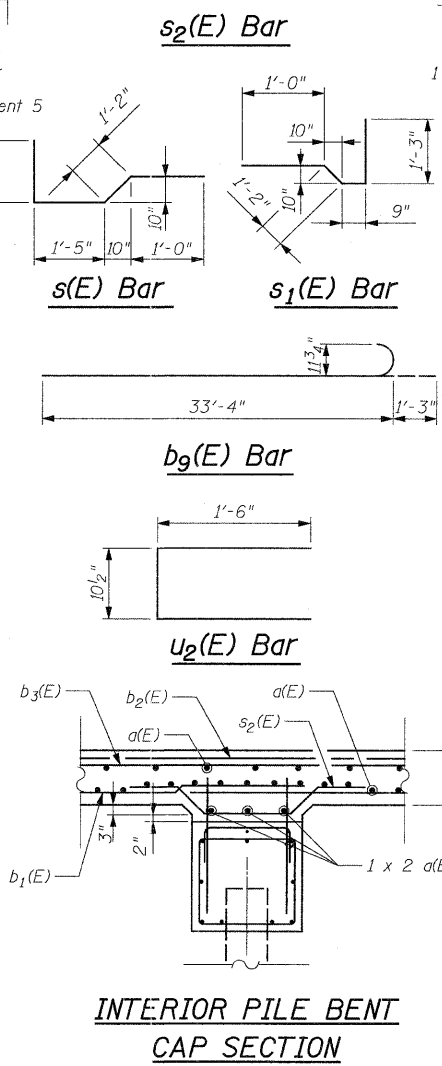
END UNIT ELEVATION

Unit 1 Shown, Unit 5 Similar by Opposite Hand
110'-8" End to End Deck



END UNIT PLAN

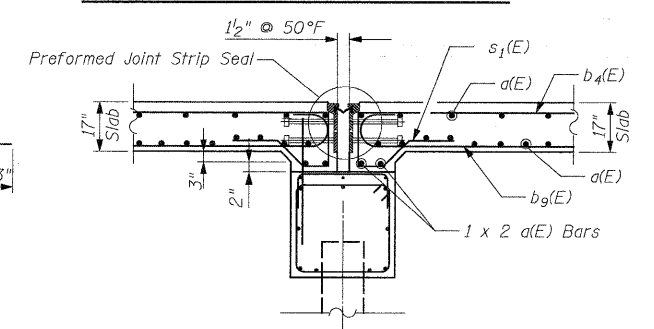
Unit 1 Shown, Unit 5 Similar by Opposite Hand



TYP. LAP SPLICE

BAR SIZE	MIN. LAP
#5	2'-11"
#8	6'-2"
#9	5'-3"

END PILE BENT CAP SECTION

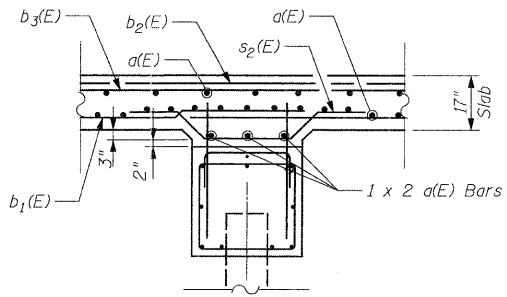


EXPANSION PILE BENT

**BILL OF MATERIAL
FOR ONE UNIT**

(Two Units Required, Unit 1 and 5)

Bar	No.	Size	Length	Shape	
a(E)	1164	#5	24'-5"	—	
b1(E)	388	#9	32'-9"	—	
b2(E)	294	#8	14'-0"	—	
b3(E)	294	#8	33'-8"	—	
b4(E)	196	#5	14'-3"	—	
b9(E)	388	#9	34'-7"	—	
s(E)	92	#5	4'-10"	L	
s1(E)	92	#5	4'-2"	J	
s2(E)	276	#5	6'-1"	—	
u2(E)	222	#5	3'-11"	—	
Concrete Superstructure				Cu. Yd.	551.8
Reinforcement Bars, Epoxy Coated				Pound	162,330
Bar Splicers				Each	277
Protective Coat				Sq. Yd.	1,135
Bridge Deck Grooving				Sq. Yd.	1,135



**INTERIOR PILE BENT
CAP SECTION**

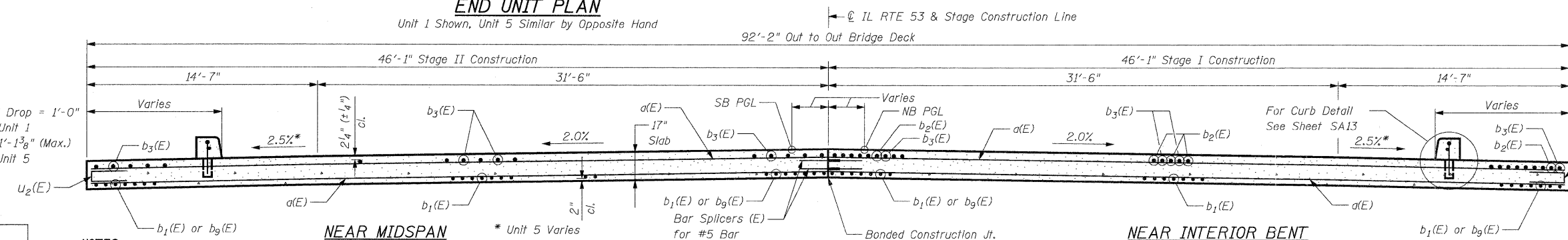
**DECK PLAN & CROSS-SECTION
(END UNITS)**

STRUCTURE NO. 022-0012

NOTES:

- Dimensions are based on a Rolled Rail Joint. If the Contractor elects to use the Welded Rail Joint, the dimensions may require adjustments to satisfy the details on Sheet SA19.
- Bars Indicated thus 20 x 3 - #5 etc. indicates 20 lines of bars with 3 lengths per bar.
- See Sheet SA27 for Bar Splicers Details.
- See Sheet SA1 for location of Drainage Scuppers and Curb Location.
- See Sheet SA13 for additional Superstructure Details.

**CROSS SECTION
(Looking North)**



DESIGNED - J. Refvik
CHECKED - R. DiGiulio
DRAWN - J. Vermillion
CHECKED - R. DiGiulio

PATRICK ENGINEERING INC.
4970 VARSITY DRIVE
LISLE, IL 60532
patrickengineering.com

SHEET NO. SA11 OF SA37	F.A.P RTE. 2578	SECTION 532B	COUNTY DUPAGE	TOTAL SHEETS 781	SHEET NO. 615
	CONTRACT NO. 60477				
12/3/2010		ILLINOIS FED. AID PROJECT			