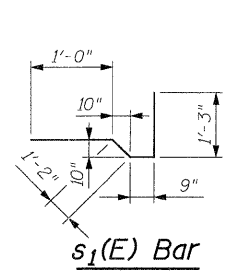
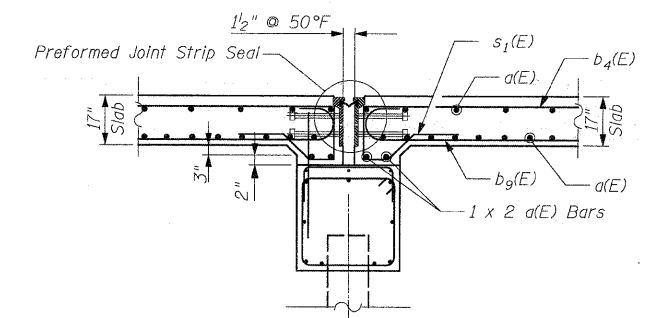


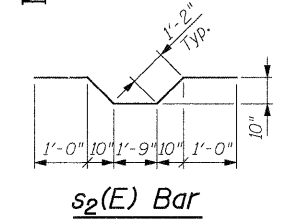
INTERIOR UNIT ELEVATION
Unit 2 Shown, Unit 3 and Unit 4 Similar



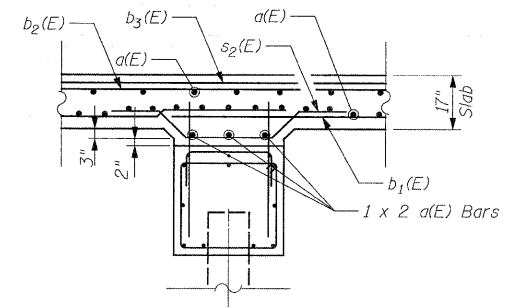
s₁(E) Bar



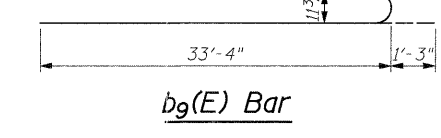
EXPANSION PILE BENT



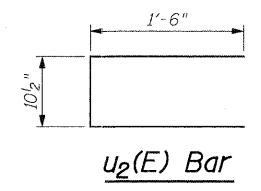
s₂(E) Bar



**INTERIOR PILE BENT
CAP SECTION**



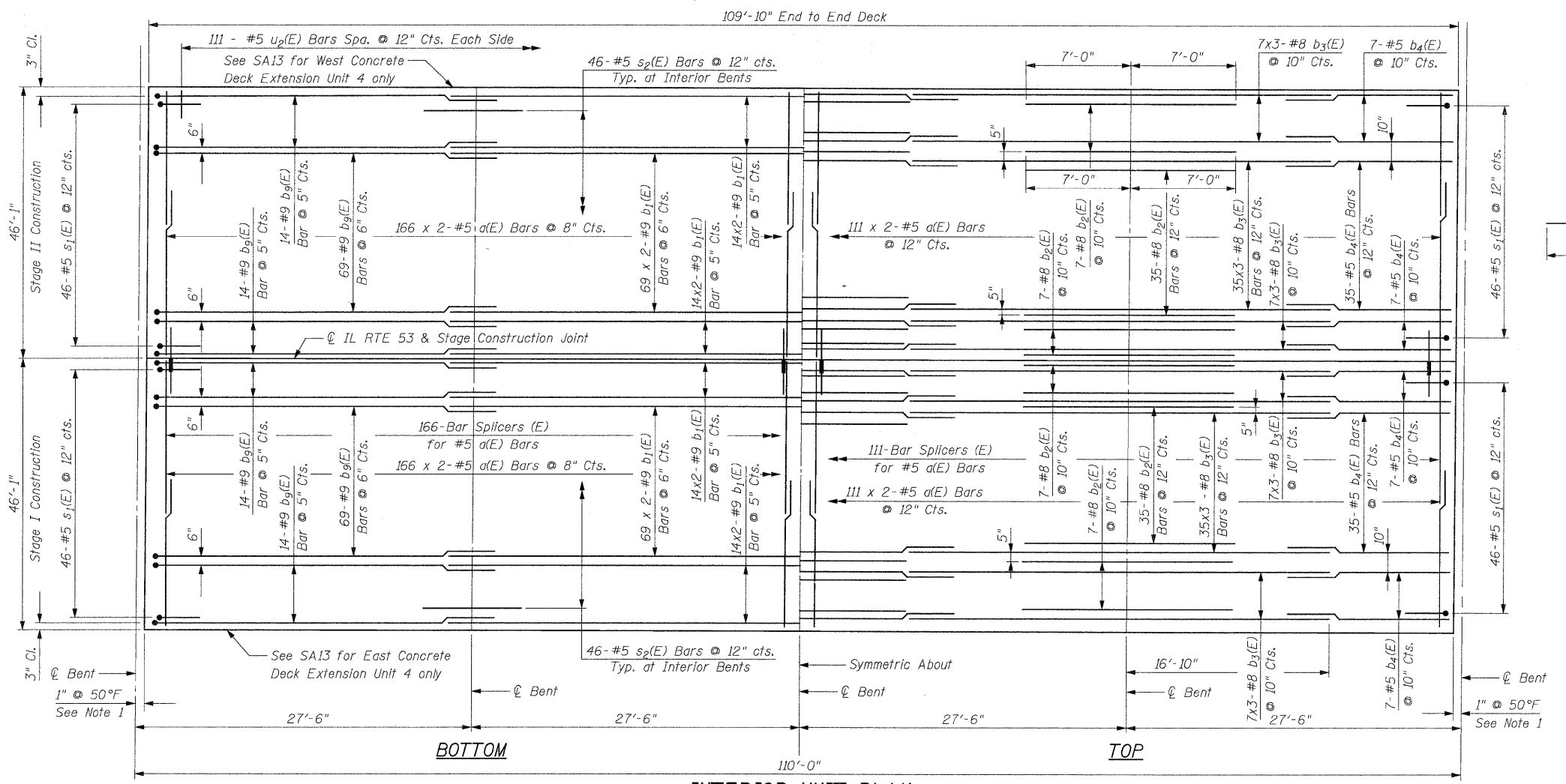
b_g(E) Bar



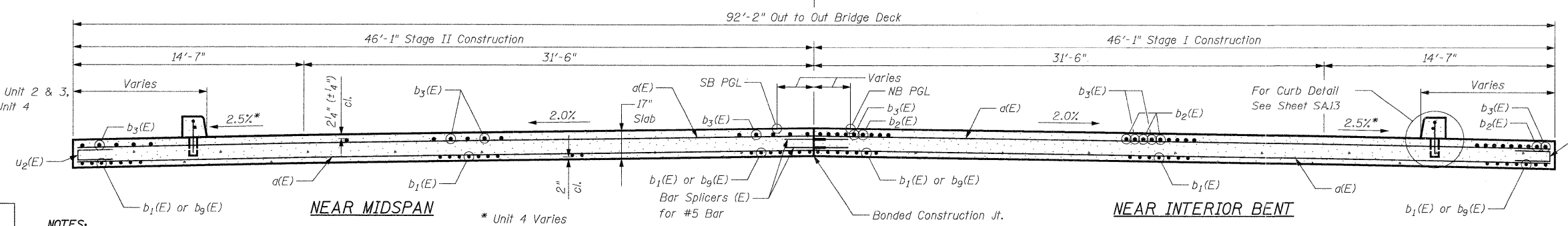
u₂(E) Bar

TYP. LAP SPLICE

BAR SIZE	MIN. LAP
#5	2'-11"
#6	6'-2"
#9	5'-3"



INTERIOR UNIT PLAN
(Unit 2 Shown, Units 3 & 4 Similar)



**DECK PLAN & CROSS-SECTION
(INTERIOR UNITS)**
STRUCTURE NO. 022-0012

DESIGNED - J. Refvik
CHECKED - R. DiGiulio
DRAWN - J. Vermillion
CHECKED - R. DiGiulio

- NOTES:**
- Dimensions are based on a Rolled Rail Joint. If the Contractor elects to use the Welded Rail Joint, the dimensions may require adjustments to satisfy the details on Sheet SA19.
 - Bars indicated thus 20 x 3 - #5 etc. indicates 20 lines of bars with 3 lengths per bar.
 - See Sheet SA27 for Bar Splicers Details.
 - See Sheet SA1 for location of Drainage Scuppers and Curb Location.
 - See Sheet SA13 for additional Superstructure Details and Bill of Materials.

CROSS SECTION
(Looking North)

PATRICK ENGINEERING INC.
4970 VARSITY DRIVE
LISLE, IL 60532
patrickengineering.com

SHEET NO. SA12 OF SA37	F.A.P RTE. 2578	SECTION 532B	COUNTY DUPAGE	TOTAL SHEETS 781	SHEET NO. 616
	CONTRACT NO. 60477				
12/3/2010		ILLINOIS FED. AID PROJECT			