

**SCUPPER REINFORCEMENT BILL OF MATERIAL**  
(For One Scupper, 14 Required)

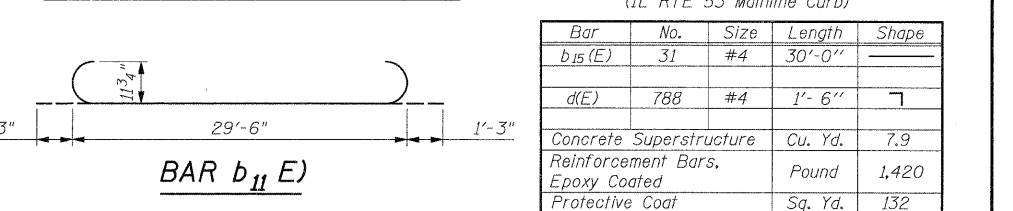
Bar	No.	Size	Length	Shape
$a_4(E)$	8	#5	4'-0"	—
Reinforcement Bars, Epoxy Coated			Pound	35

**SCUPPER REINFORCEMENT BILL OF MATERIAL FOR ONE UNIT**  
(Unit 4)

Bar	No.	Size	Length	Shape
$a_4(E)$	1160	#5	24'-5"	—
$a_2(E)$	83	#5	11'-4"	—
$a_3(E)$	83	#5	7'-1"	—
$b_{11}(E)$	388	#9	32'-9"	—
$b_2(E)$	294	#8	14'-0"	—
$b_3(E)$	294	#8	33'-8"	—
$b_4(E)$	196	#5	14'-3"	—
$b_9(E)$	388	#9	34'-7"	—
$b_{10}(E)$	38	#8	29'-6"	—
$b_{11}(E)$	38	#9	32'-0"	—
$s_1(E)$	184	#5	4'-2"	—
$s_2(E)$	276	#5	6'-1"	—
$s_3(E)$	40	#5	5'-6"	—
$u_2(E)$	284	#5	3'-11"	—
Concrete Superstructure		Cu. Yd.		547.1
Reinforcement Bars, Epoxy Coated		Pound		162,160
Bar Splicers		Each		277
Protective Coat		Sq. Yd.		1,127
Bridge Deck Grooving		Sq. Yd.		1,127

**TYPE B6.24 CURB BILL OF MATERIAL**  
(IL RTE 53 Mainline Curb)

Bar	No.	Size	Length	Shape
$b_{15}(E)$	31	#4	30'-0"	—
d(E)	788	#4	1'-6"	└
Concrete Superstructure		Cu. Yd.		7.9
Reinforcement Bars, Epoxy Coated		Pound		1,420
Protective Coat		Sq. Yd.		132



**d(E) CURB BAR**

**BAR  $s_3(E)$**

**SUPERSTRUCTURE REINFORCING DETAILS**  
STRUCTURE NO. 022-0012

DESIGNED - J. Refvik  
CHECKED - R. DiGiulio  
DRAWN - J. Vermillion  
CHECKED - R. DiGiulio

SHEET NO. SA13 OF SA37	F.A.P R.T.E. 2578	SECTION 532B	COUNTY DUPAGE	TOTAL SHEETS 781	SHEET NO. 617
CONTRACT NO. 60477					
12/3/2010 ILLINOIS FED. AID PROJECT					

PATRICK ENGINEERING INC.  
4970 VARSITY DRIVE  
LISLE, IL 60532  
patrickengineering.com