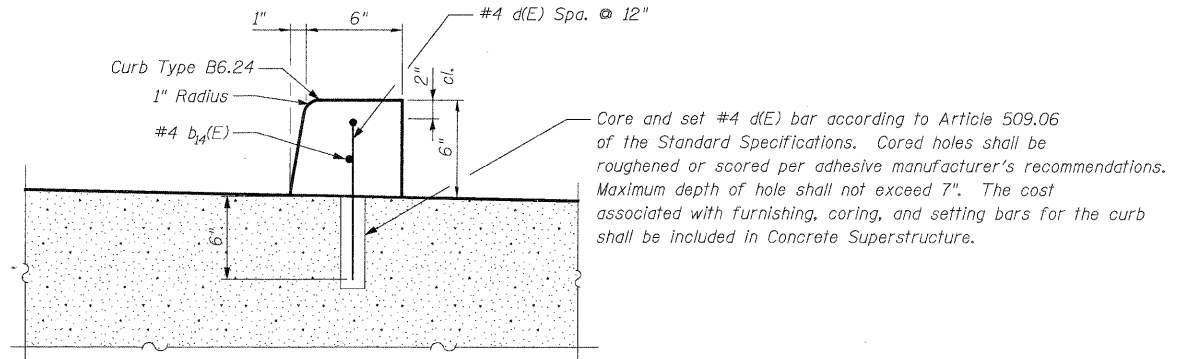
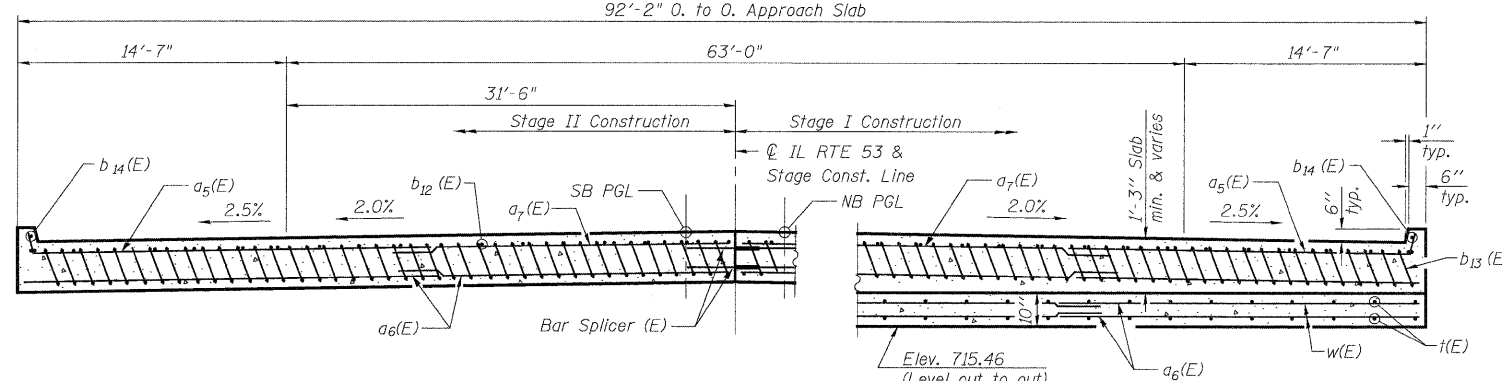


- Notes:
1. See sheet SA14 for Detail A.
 2. Approach slab and curb concrete shall be paid for as Concrete Superstructure.
 3. Approach footing concrete shall be paid for as Concrete Structures.
 4. Reinforcement shall be paid for as Reinforcement Bars, Epoxy Coated.
 5. For $v_1(E)$ bar details, see sheet SA21.
 6. The approach footing maximum applied service bearing pressure (Q_{max}) = 2.0 ksf.
 7. For bar splicer details, see sheet SA27.
 8. Cost of excavation for approach footing included with Concrete Structures.
 9. For Porous Granular Embankment (Special) details, see sheet SA2.

* Tilt #9 $b_{13}(E)$ bars as required to maintain clearance.
 *** Cost included with Concrete Superstructure.

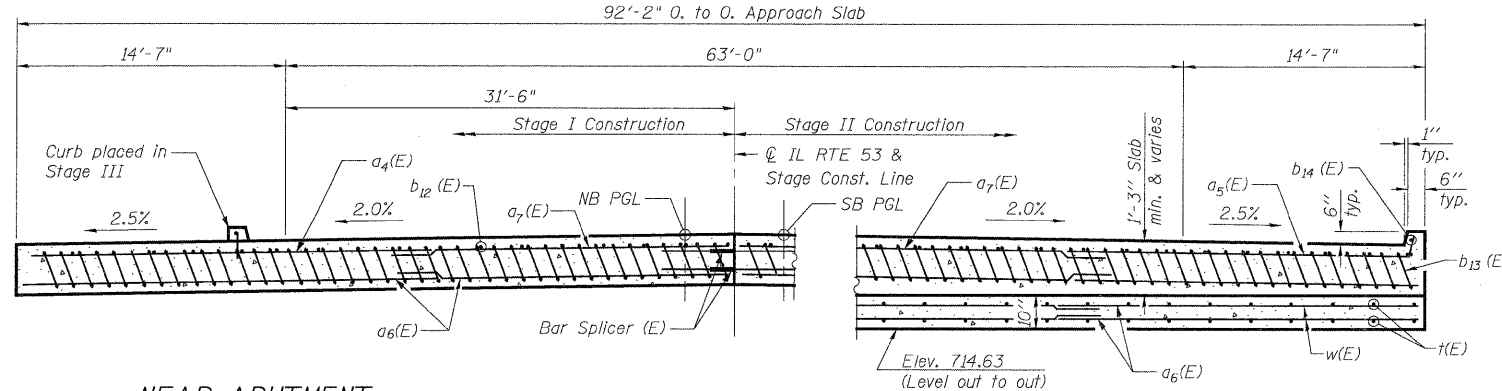


NEAR ABUTMENT

SECTION D-D

AT APPROACH FOOTING

CURB REINFORCEMENT DETAIL



NEAR ABUTMENT

SECTION G-G

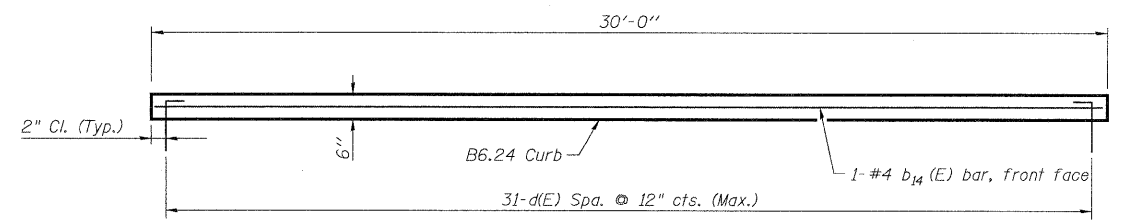
AT APPROACH FOOTING

SOUTH APPROACH SLAB BILL OF MATERIAL

NORTH APPROACH SLAB BILL OF MATERIAL

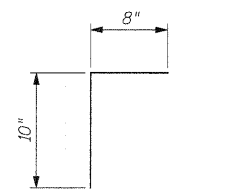
Bar	No.	Size	Length	Shape
$a_5(E)$	25	#4	24'-10"	—
$a_6(E)$	184	#5	24'-4"	—
$a_7(E)$	75	#4	24'-1"	—
$b_{12}(E)$	76	#4	29'-8"	—
$b_{13}(E)$	220	#9	29'-9"	—
$b_{14}(E)$	2	#4	29'-8"	—
$d(E)$	31	#4	1'-6"	┌
$t(E)$	94	#4	9'-8"	—
$w(E)$	160	#5	24'-3"	—
Concrete Superstructure		Cu. Yd.	150.7	
Concrete Structures		Cu. Yd.	28.5	
Reinforcement Bars, Epoxy Coated		Pound	34,760	
Bar Splicers		Each	111	
Protective Coat		Sq. Yd.	318	
Bridge Deck Grooving		Sq. Yd.	308	

Bar	No.	Size	Length	Shape
$a_5(E)$	50	#4	24'-10"	—
$a_6(E)$	184	#5	24'-4"	—
$a_7(E)$	50	#4	24'-1"	—
$b_{12}(E)$	76	#4	29'-8"	—
$b_{13}(E)$	220	#9	29'-9"	—
$b_{14}(E)$	2	#4	29'-8"	—
$t(E)$	94	#4	9'-8"	—
$w(E)$	160	#5	24'-3"	—
Concrete Superstructure		Cu. Yd.	150.7	
Concrete Structures		Cu. Yd.	28.5	
Reinforcement Bars, Epoxy Coated		Pound	34,760	
Bar Splicers		Each	111	
Protective Coat		Sq. Yd.	318	
Bridge Deck Grooving		Sq. Yd.	308	



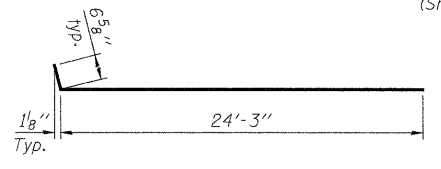
VIEW E-E

(Showing East Edge of South Appr. Pav't)

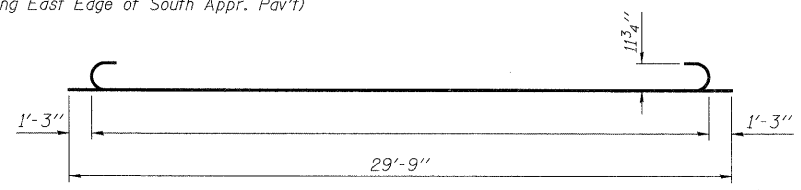


d(E) CURB BAR

DESIGNED - J. Vermillion
 CHECKED - J. Refvik
 DRAWN - J. Vermillion
 CHECKED - R. DiGiulio



BAR $a_5(E)$



BAR $b_{13}(E)$

PATRICK ENGINEERING INC.
 4970 VARSITY DRIVE
 LISLE, IL 60532
 patrickengineering.com

SHEET NO. SA15 OF SA37	F.A.P RTE. 2578	SECTION 532B	COUNTY DUPAGE	TOTAL SHEETS 781	SHEET NO. 619
	CONTRACT NO. 60477				
12/3/2010		ILLINOIS FED. AID PROJECT			

**IL 53 APPROACH SLAB II
 STRUCTURE NO. 022-0012**