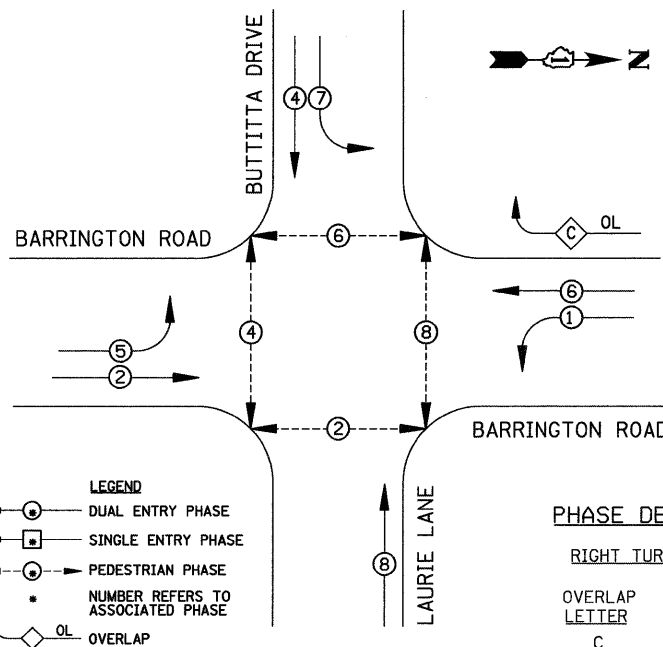


CONTROLLER SEQUENCE



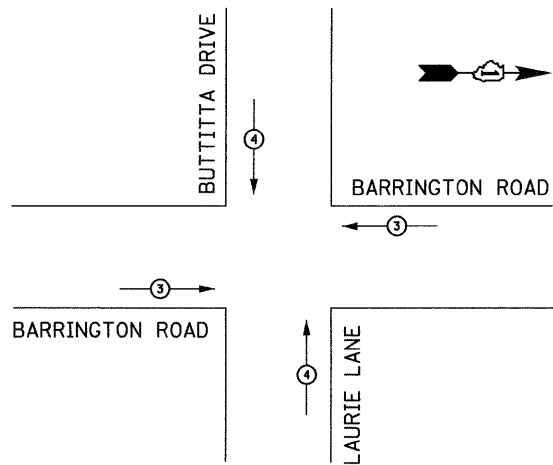
PHASE DESIGNATION DIAGRAM

RIGHT TURN OVERLAP DESIGNATION

OVERLAP LETTER	PERMISSIVE PHASE	PROTECTED PHASE
C	= 6	+ 7

PHASE DESIGNATION DIAGRAM

EMERGENCY VEHICLE PREEMPTION SEQUENCE



PROPOSED EMERGENCY VEHICLE PREEMPTOR			
EMERGENCY VEHICLE PREEMPTOR	3	4	
MOVEMENT	→	←	↕

SCHEDULE OF QUANTITIES

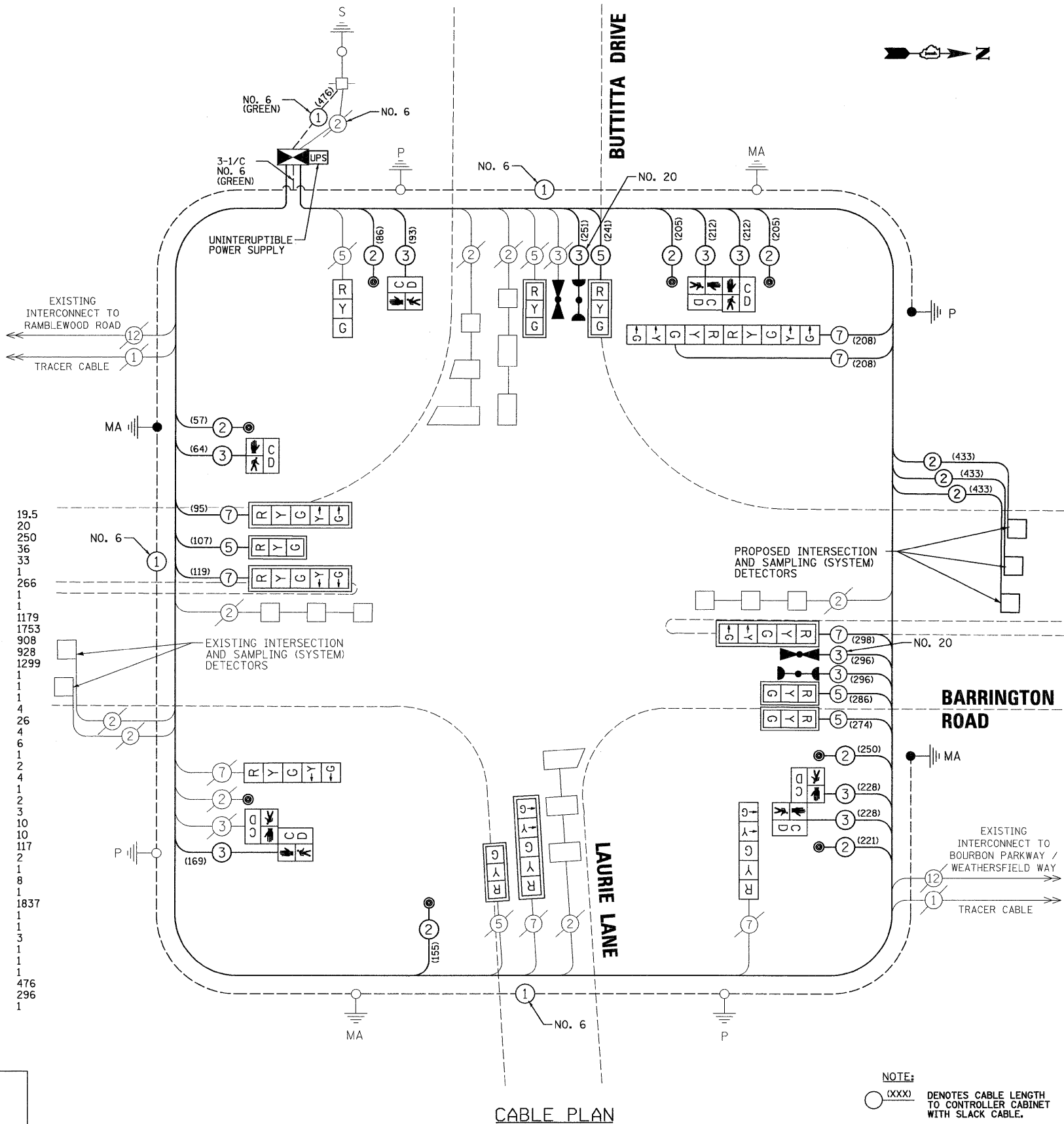
SIGN PANEL, TYPE 2	SQ FT	19.5
RELOCATE SIGN PANEL, TYPE 2	SQ FT	20
CONDUIT IN TRENCH, 2" DIA., GALVANIZED STEEL	FOOT	250
CONDUIT IN TRENCH, 2 1/2" DIA., GALVANIZED STEEL	FOOT	36
CONDUIT PUSHED, 2 1/2" DIA., GALVANIZED STEEL	FOOT	33
HANDHOLE	EACH	1
TRENCH AND BACKFILL FOR ELECTRICAL WORK	FOOT	266
FULL-ACTUATED CONTROLLER AND TYPE IV CABINET, SPECIAL TRANSCIEVER- FIBER OPTIC	EACH	1
ELECTRIC CABLE IN CONDUIT, SIGNAL NO. 14 2C	FOOT	1179
ELECTRIC CABLE IN CONDUIT, SIGNAL NO. 14 3C	FOOT	1753
ELECTRIC CABLE IN CONDUIT, SIGNAL NO. 14 5C	FOOT	908
ELECTRIC CABLE IN CONDUIT, SIGNAL NO. 14 7C	FOOT	928
ELECTRIC CABLE IN CONDUIT, LEAD-IN, NO. 14 1 PAIR	FOOT	1299
TRAFFIC SIGNAL POST, GALVANIZED STEEL 16 FT.	EACH	1
STEEL MAST ARM ASSEMBLY AND POLE, 36 FT.	EACH	1
STEEL MAST ARM ASSEMBLY AND POLE, 50 FT.	EACH	1
CONCRETE FOUNDATION, TYPE A	FOOT	4
CONCRETE FOUNDATION, TYPE E 36-INCH DIAMETER	FOOT	26
DRILL EXISTING HANDHOLE	EACH	4
SIGNAL HEAD, LED, 1-FACE, 3-SECTION, MAST-ARM MOUNTED	EACH	6
SIGNAL HEAD, LED, 1-FACE, 3-SECTION, BRACKET MOUNTED	EACH	1
SIGNAL HEAD, LED, 1-FACE, 5-SECTION, BRACKET MOUNTED	EACH	2
SIGNAL HEAD, LED, 1-FACE, 5-SECTION, MAST-ARM MOUNTED	EACH	4
SIGNAL HEAD, LED, 2-FACE, 5-SECTION, BRACKET MOUNTED	EACH	1
PEDESTRIAN SIGNAL HEAD, LED, 1-FACE, BRACKET MOUNTED	EACH	2
PEDESTRIAN SIGNAL HEAD, LED, 2-FACE, BRACKET MOUNTED	EACH	3
TRAFFIC SIGNAL BACKPLATE, LOUVERED, ALUMINUM	EACH	10
INDUCTIVE LOOP DETECTOR	EACH	10
DETECTOR LOOP, TYPE 1	FOOT	117
LIGHT DETECTOR	EACH	2
LIGHT DETECTOR AMPLIFIER	EACH	1
PEDESTRIAN PUSH-BUTTON	EACH	8
TEMPORARY TRAFFIC SIGNAL INSTALLATION	EACH	1
REMOVE ELECTRIC CABLE FROM CONDUIT	FOOT	1837
REMOVE EXISTING TRAFFIC SIGNAL EQUIPMENT	EACH	1
REMOVE EXISTING HANDHOLE	EACH	1
REMOVE EXISTING CONCRETE FOUNDATION	EACH	3
TEMPORARY TRAFFIC SIGNAL TIMING	EACH	1
RE-OPTIMIZE TRAFFIC SIGNAL SYSTEM - LEVEL I	EACH	1
UNINTERRUPTIBLE POWER SUPPLY	EACH	1
ELECTRIC CABLE IN CONDUIT, GROUNDING, NO. 6 1C	FOOT	476
ELECTRIC CABLE IN CONDUIT, NO. 20 3/C, TWISTED & SHIELDED	FOOT	296
REBUILD EXISTING HANDHOLE	EACH	1

- * 100% COST TO THE VILLAGE OF HANOVER PARK
- ** PARTIAL COST TO THE VILLAGE OF HANOVER PARK

RESTORATION OF WORK AREA

RESTORATION OF THE TRAFFIC SIGNAL WORK AREA SHALL BE INCIDENTAL TO THE RELATED PAY ITEM SUCH AS FOUNDATION, CONDUIT, HANDHOLE, TRENCH AND BACKFILL, ETC., AND NO EXTRA COMPENSATION SHALL BE ALLOWED. ALL ROADWAY SURFACES SUCH AS SHOULDERS, MEDIANS, SIDEWALKS, PAVEMENT, ETC. SHALL BE REPLACED IN KIND. ALL DAMAGE TO MOWED LAWNS SHALL BE REPLACED WITH AN APPROVED SOD, AND ALL DAMAGE TO UNMOWED FIELDS SHALL BE SEED IN ACCORDANCE WITH STANDARD SPECIFICATIONS 252 AND 250 RESPECTIVELY.

NOTE: THE TRAFFIC SIGNAL CONTROL EQUIPMENT FOR THIS PROJECT SHALL BE "ECONOLITE" TO MATCH THE EXISTING ADJACENT SYSTEM.



CABLE PLAN

NOTE: (xxx) DENOTES CABLE LENGTH TO CONTROLLER CABINET WITH SLACK CABLE.

I.D.O.T. TRAFFIC SIGNAL INSTALLATION ELECTRICAL SERVICE REQUIREMENTS					TOTAL WATTAGE
TYPE	NO. LAMPS	WATTAGE INCAND. LED	%OPERATION		
SIGNAL (RED)	15	135	17	0.50	127.5
(YELLOW)	15	135	25	0.25	93.75
(GREEN)	15	135	15	0.25	56.25
ARROW	16	135	12	0.10	19.2
PED. SIGNAL	8	90	25	1.00	200
CONTROLLER	1	100	100	1.00	100
ILLUM. SIGN		84		0.05	
FLASHER				0.50	
ENERGY COSTS TO: ILLINOIS DEPARTMENT OF TRANSPORTATION 201 W. CENTER COURT SCHAUMBURG, IL 60196					TOTAL = 596.7
ENERGY SUPPLY CONTACT: _____ PHONE: _____ COMPANY: COMED					

FILE NAME = \MICROST\352088\	USER NAME = RDS	DESIGNED - KK	REVISED -
		DRAWN - RDS	REVISED -
		CHECKED - BPT	REVISED -
		DATE - 3-15-10	REVISED -

STATE OF ILLINOIS DEPARTMENT OF TRANSPORTATION

SCHEDULE OF QUANTITIES, CABLE PLAN, PHASE DESIGNATION DIAGRAM AND EMERGENCY VEHICLE PREEMPTION BARRINGTON ROAD AT BUTTITTA DRIVE/LAURIE LANE			
SCALE: N.T.S.	SHEET NO. OF SHEETS	STA. TO STA.	

PREPARED BY: **CEMCON, Ltd.**
 Consulting Engineers, Land Surveyors & Planners
 2280 White Oak Circle, Suite 100
 Aurora, Illinois 60504-9675
 Ph: 630.862.2100 Fax: 630.862.2199
 E-Mail: codd@cemcon.com Website: www.cemcon.com

F.A.P. RTE. 362	SECTION 0105-N-2	COUNTY COOK	TOTAL SHEETS 4/	SHEET NO. 24
FED. ROAD DIST. NO. ILLINOIS FED. AID PROJECT			CONTRACT NO. 60J09	