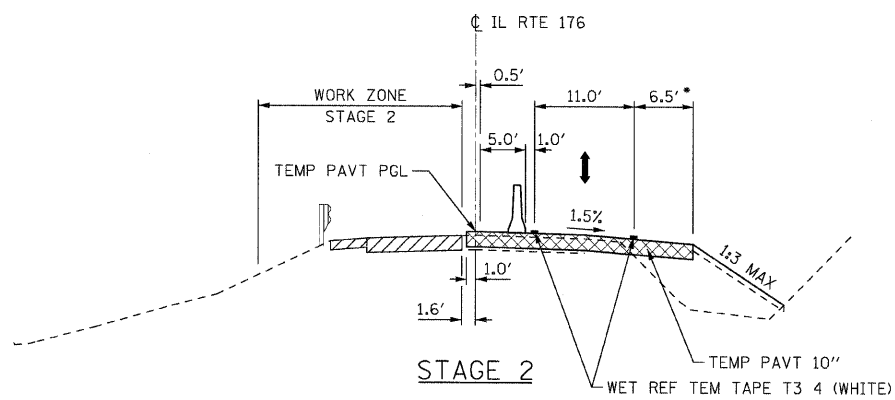
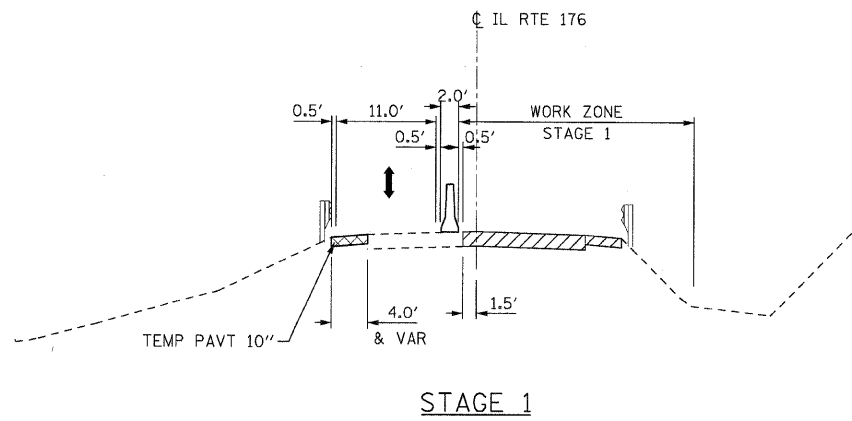
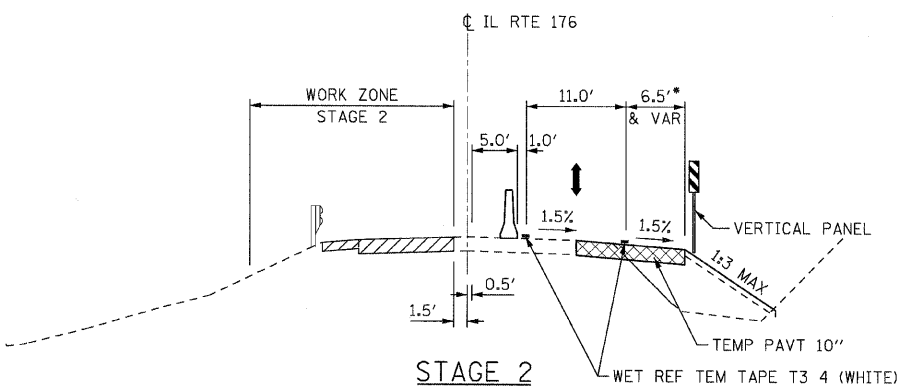


DATE	
BY	
DESIGNED	
DRAWN	
CHECKED	
DATE	
PLAN	
NO.	
NO.	
NO.	
NO.	
NO.	
NO.	

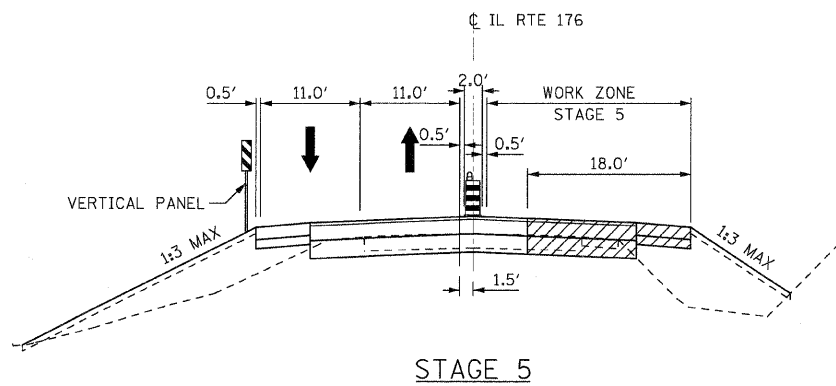
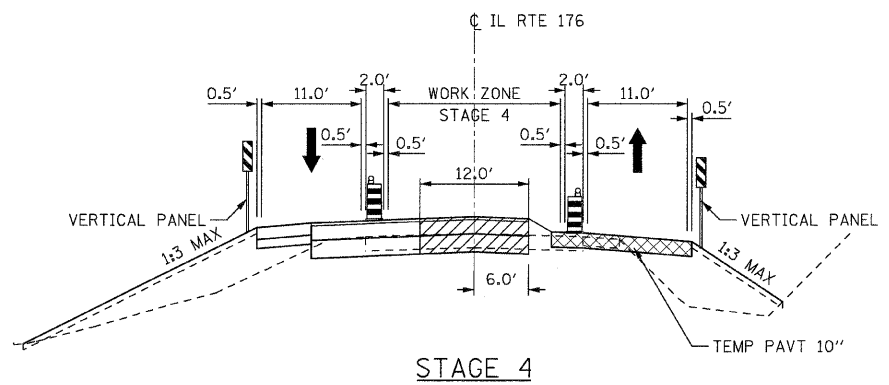
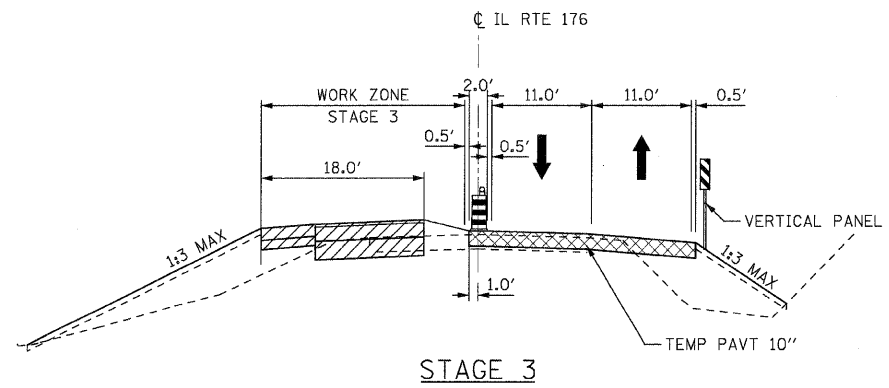
DATE	
BY	
DESIGNED	
DRAWN	
CHECKED	
DATE	
PLAN	
NO.	
NO.	
NO.	
NO.	
NO.	
NO.	



STA 1158+70 TO STA 1160+00
• FOR STAGE 3 & 4 MOT LANES



STA 1151+05 TO STA 1158+70
STA 1160+00 TO STA 1168+40
• FOR STAGE 3 & 4 MOT LANES



NOTES

1. THE CROSS SLOPE OF THE TEMPORARY PAVEMENT SHALL MATCH THE CROSS SLOPE OF THE EXISTING PAVEMENT (OR AS DIRECTED BY THE ENGINEER).
2. THE TEMPORARY PAVEMENT 10" WILL BE COMPRISED OF:
8 1/2" HOT-MIX ASPHALT BINDER IL-19, N70 &
1 1/2" HOT MIX ASPHALT SURFACE COURSE, MIX "D", N70

...D160J67-sh1-MOT-typical.dgn
12/23/2010
9:42:14 AM



DESIGNED	JRB	REVISED	-
DRAWN	JRB	REVISED	-
CHECKED	RJD	REVISED	-
DATE	JANUARY 3, 2011	REVISED	-

**STATE OF ILLINOIS
DEPARTMENT OF TRANSPORTATION**

**IL ROUTE 176 OVER EAST SKOKIE DITCH
MOT TYPICAL SECTIONS**

SCALE: NTS SHEET NO. 1 OF 1 SHEETS STA. TO STA.

F.A.U. RTE.	SECTION	COUNTY	TOTAL SHEETS	SHEET NO.
1238	C-B-1	LAKE	61	11
ILLINOIS FED. AID PROJECT			CONTRACT NO. 60J67	