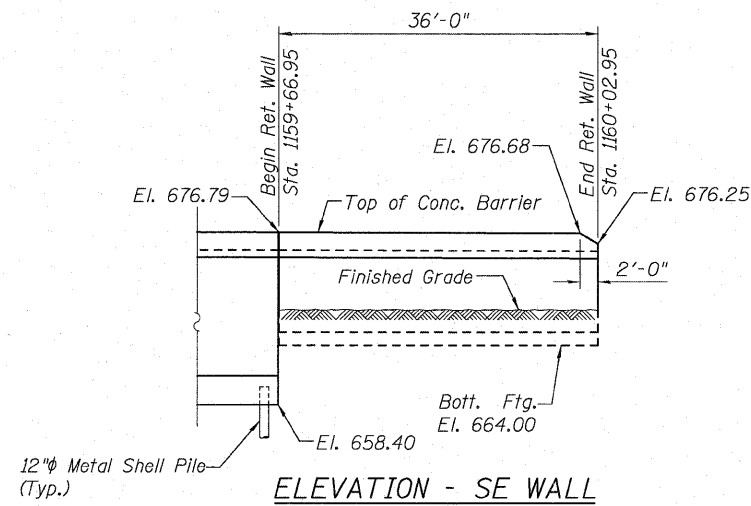
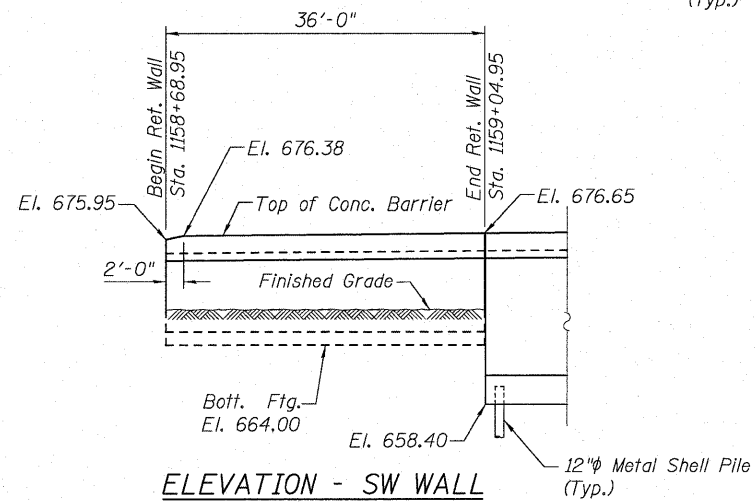
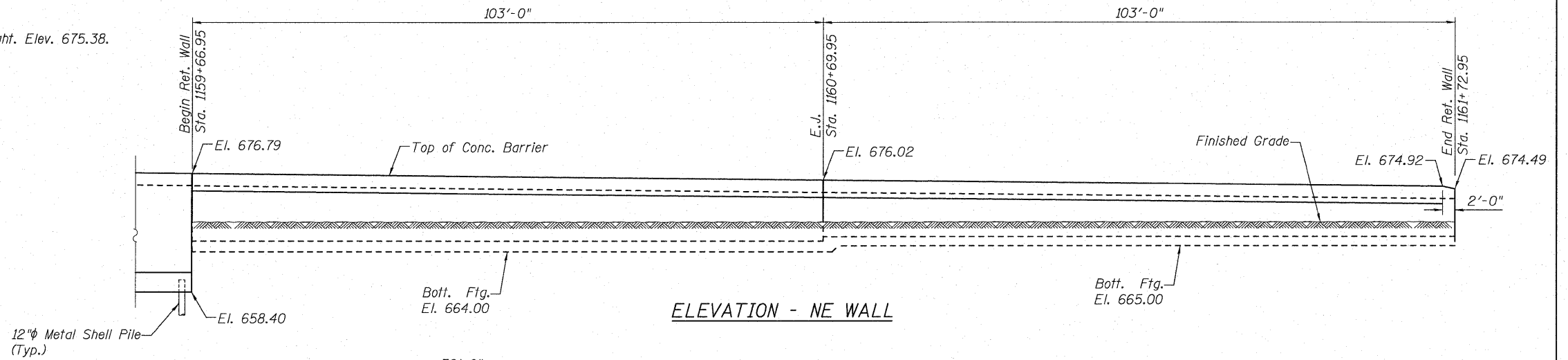


Benchmark: X cut SW bolt on hydrant at Sta. 1161+97 and Offset 51' right. Elev. 675.38.

Existing Structure: None



GENERAL NOTES:

Reinforcement bars shall conform to the requirements of ASTM A 706 Gr. 60. See Special Provisions.

Reinforcement bars designated (E) shall be epoxy coated.

For Total Bill of Material, see Sheet S-2 of S-15.

DESIGN SPECIFICATIONS

2002 AASHTO Standard Specifications, 17th Edition

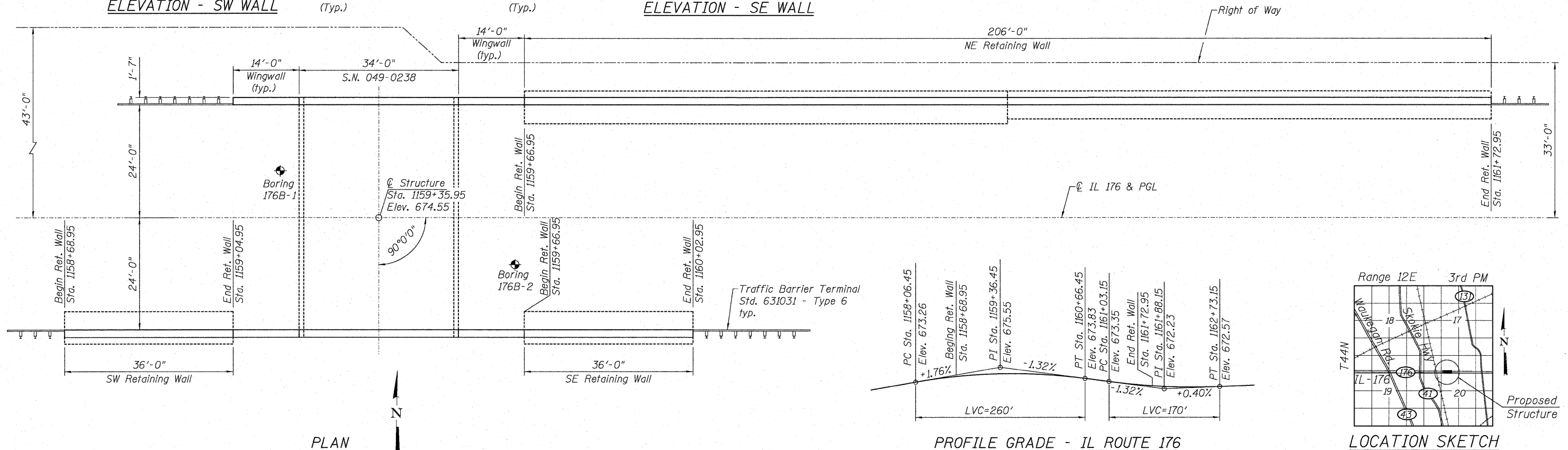
DESIGN STRESSES

FIELD UNITS

$f'_c = 3,500$ psi
 $f_y = 60,000$ psi (Reinforcement)

SEISMIC DATA

Seismic Performance Category (SPC) = A
 Bedrock Acceleration Coefficient (A) = 0.035g
 Site Coefficient (S) = 1.0



USER NAME =	DESIGNED - JXH	REVISED -
PLOT SCALE =	CHECKED - JW	REVISED -
PLOT DATE =	DRAWN - JLS	REVISED -
	CHECKED - JXH/JW	REVISED -

STATE OF ILLINOIS
 DEPARTMENT OF TRANSPORTATION

GENERAL PLAN - RETAINING WALLS
 STATION 1158 + 68.95 TO STATION 1161 + 72.95

SHEET NO. S-11 OF S-15 SHEETS

F.A.U. RTE.	SECTION	COUNTY	TOTAL SHEETS	SHEET NO.
1238	C-BR	LAKE	61	39
DATE: 1-28-2011			ILLINOIS FED. AID PROJECT	