

STATE OF ILLINOIS
DEPARTMENT OF TRANSPORTATION
DIVISION OF HIGHWAYS

**PROPOSED
HIGHWAY PLANS**

FAP ROUTE 330: US 45 (LAGRANGE ROAD)
SECTION: 73 R-B
PROJECT: ACCMF-ACNHF-0330(064)
RAILROAD BRIDGE REPLACEMENT
COOK COUNTY
C-91-538-10

F.A.P. RTE.	SECTION	COUNTY	TOTAL SHEETS	SHEET NO.
330	73 R-B	COOK	136	1
ILLINOIS CONTRACT NO. 60K64			X-136+2 = 138	

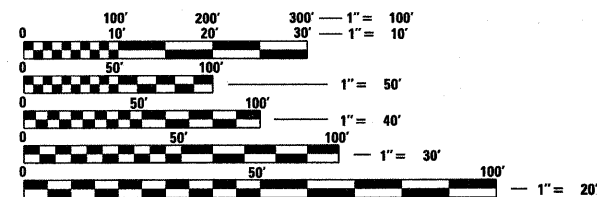
FOR INDEX OF SHEETS, SEE SHEET NO. 2

DESIGN DESIGNATION:

US 45 (LAGRANGE ROAD): 3800 (20) OTHER PRINCIPAL ARTERIAL AND STRATEGIC REGIONAL ARTERIAL (SRA) - CLASS II TRUCK ROUTE 11.55 (JPCP-20)

DESIGN SPEED:

US 45 (LAGRANGE ROAD) = 45 MPH

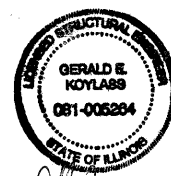


FULL SIZE PLANS HAVE BEEN PREPARED USING STANDARD ENGINEERING SCALES. REDUCED SIZED PLANS WILL NOT CONFORM TO STANDARD SCALES. IN MAKING MEASUREMENTS ON REDUCED PLANS, THE ABOVE SCALES MAY BE USED.

J.U.L.I.E.
JOINT UTILITY LOCATION INFORMATION FOR EXCAVATION
1-800-892-0123
OR 811

PROJECT ENGINEER: MICHELE AQUINO
PROJECT MANAGER: RAJESH K. SHAH

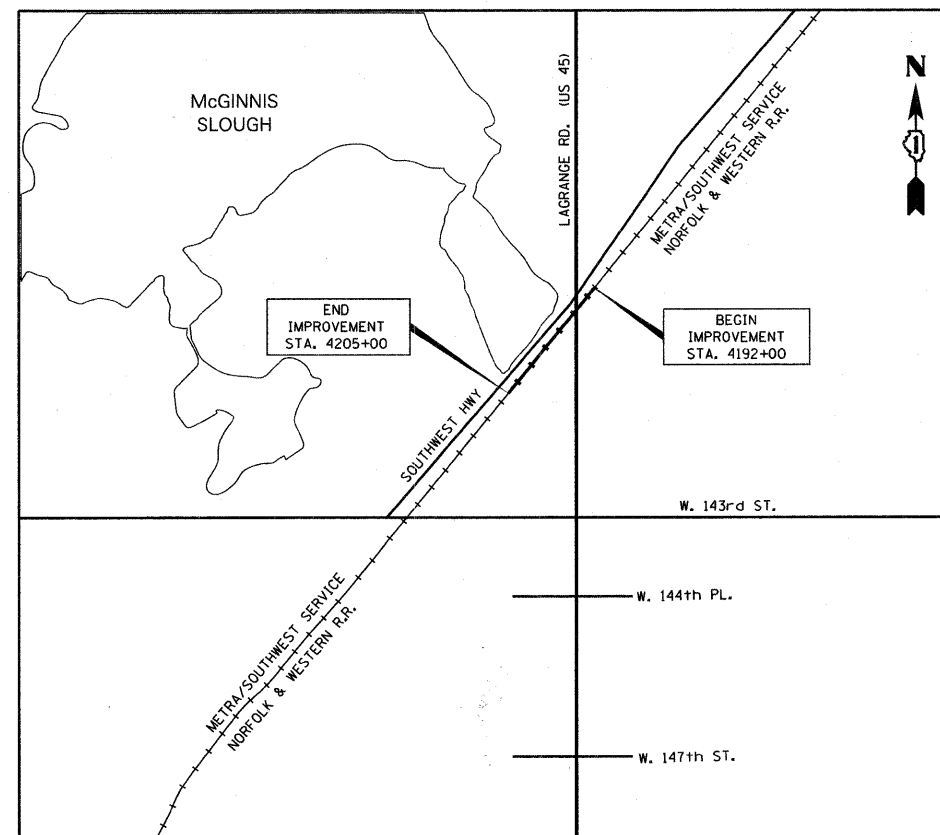
CONTRACT NO. 60K64



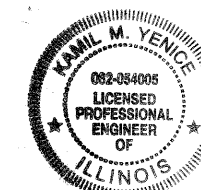
NAME: GERALD E. KOYLASS
EXP. 11/30/2012
DATE: 11/15/2010
SHT NO. 53-112



NAME: RICHARD J. YOUNG
EXP. 11/30/2011
DATE: 11/15/2010
SHT NO. 1-36, 113-136



GROSS LENGTH = 1,300 FT. = 0.25 MILE
NET LENGTH = 1,300 FT. = 0.25 MILE



NAME: KAMIL M. YENICE
EXP. 11/30/2011
DATE: 11/15/2010
SHT NO. 37-52

STATE OF ILLINOIS
DEPARTMENT OF TRANSPORTATION
DIVISION OF HIGHWAYS

SUBMITTED DECEMBER 15 2010

Diana M. O'Keefe
DEPUTY DIRECTOR OF HIGHWAYS, REGION ENGINEER

February 4 2011
Scott E. Stett, P.E.
acting ENGINEER OF DESIGN AND ENVIRONMENT

February 4 2011
Christine M. Reed
DIRECTOR OF HIGHWAYS, CHIEF ENGINEER

PRINTED BY THE AUTHORITY
OF THE STATE OF ILLINOIS