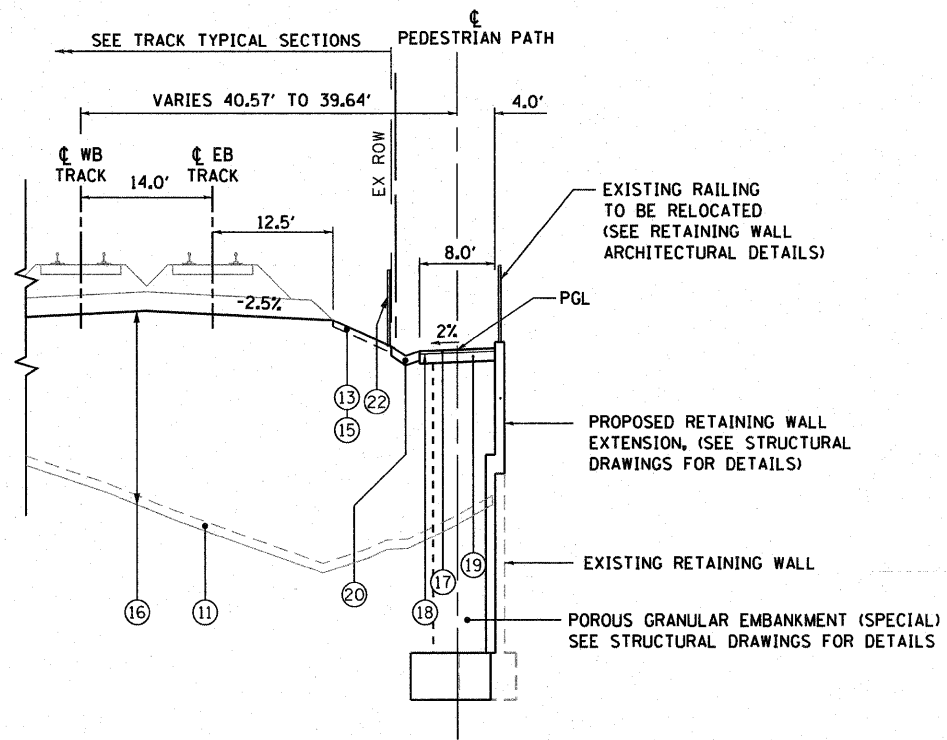


TYPICAL SECTION

PEDESTRIAN PATH
 (1) 5' WIDE @ CONNECTOR FROM STAIRS TO PROPOSED SIDEWALK (BY OTHERS)



TYPICAL SECTION

PEDESTRIAN PATH ADJACENT TO RAILROAD AND PROPOSED RETAINING WALL

EXISTING LEGEND

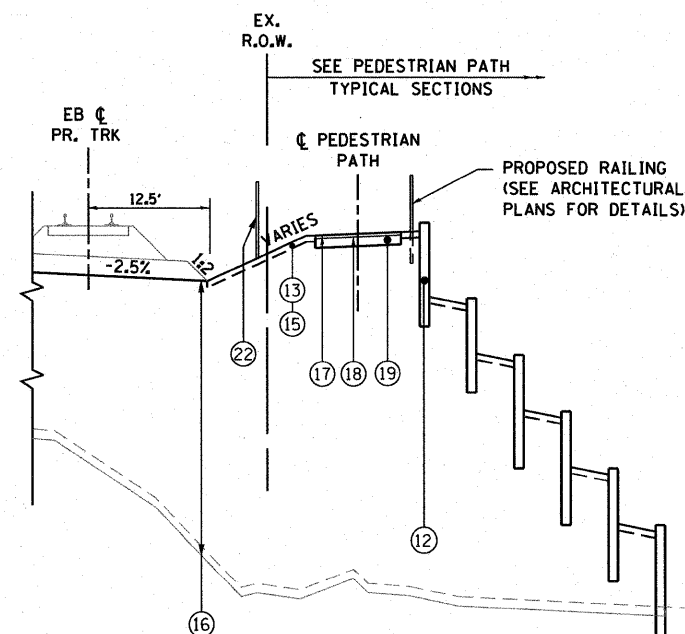
- (A) 12" BALLAST
- (B) 12" SUB-BALLAST
- (C) RAILS
- (D) TIMBER CROSS TIE
- (E) SIDEWALK
- (F) PLATFORM
- (G) PEDESTRIAN PATH

PROPOSED LEGEND

- (1) HOT-MIX ASPHALT SURFACE COURSE, MIX "D", N50 1 1/2"
- (2) BITUMINOUS MATERIALS (PRIME COAT)
- (3) HOT-MIX ASPHALT BINDER COURSE, IL-19.0 N50 2 1/4"
- (4) PORTLAND CEMENT CONCRETE BASE COURSE 9"
- (5) AGGREGATE SUBGRADE 12"
- (6) CONCRETE MEDIAN
- (7) CROSS TIES
- (8) 12" BALLAST
- (9) 12" SUB-BALLAST
- (10) RAILS
- (11) TOPSOIL STRIPPING, 4"
- (12) TIERED SEGMENTAL BLOCK WALL
- (13) TOPSOIL FURNISH AND PLACE, 4"
- (14) GEOTECHNICAL FABRIC FOR GROUND STABILIZATION
- (15) SEEDING OR SODDING, SALT TOLERANT, SEE LANDSCAPING PLANS
- (16) EMBANKMENT
- (17) HOT-MIX ASPHALT SURFACE COURSE, MIX "D", N50 2"
- (18) AGGREGATE (PRIME COAT)
- (19) AGGREGATE BASE COURSE, TYPE B 6"
- (20) CONCRETE GUTTER, TYPE B
- (21) PORTLAND CEMENT CONCRETE SIDEWALK 6 INCH
- (22) ORNAMENTAL FENCE (BY OTHERS)

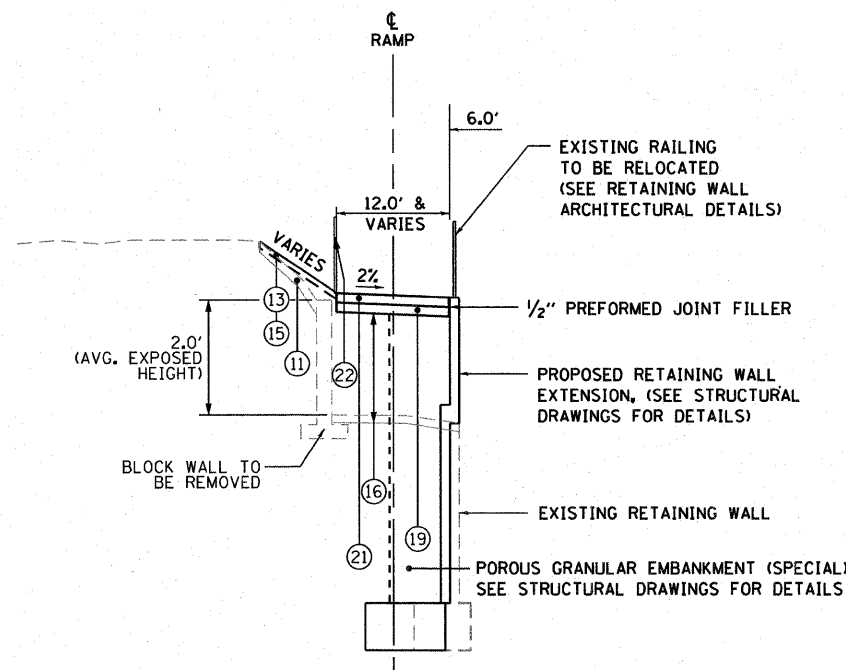
NOTE:
 1. PROFILE GRADE LINE IS AT THE TOP OF RAIL. DISTANCE FROM TOP OF RAIL TO THE CROWN IN EMBANKMENT IS 3.06'.

• NOT INCLUDED IN THIS CONTRACT - BY OTHERS



DETAIL 1

STA. 4197+43.00 TO STA. 4198+68.00



TYPICAL SECTION

RAMP ON WEST SIDE OF DETENTION POND

HOT-MIX ASPHALT MIXTURE REQUIREMENTS

MIXTURE TYPE	AIR VOIDS
TEMPORARY PAVEMENT (12")	
HOT-MIX ASPHALT SURFACE COURSE, MIX "D", N50 (IL 9.5 mm) 1 1/2"	4% @ 50 Gyr.
HOT-MIX ASPHALT BINDER COURSE, IL-19.0, N50, 10 1/2" (IN 4 LIFTS)	4% @ 50 Gyr.
PEDESTRIAN PATH	
HOT-MIX ASPHALT SURFACE COURSE, MIX "D", N50 (IL 9.5 mm) 2"	4% @ 50 Gyr.

NOTE 1: THE UNIT WEIGHT USED TO CALCULATE ALL HMA SURFACE MIXTURE QUANTITIES IS 112 LBS/SO YD./IN.
 NOTE 2: THE "AC TYPE" FOR POLYMERIZED HMA MIXES SHALL BE "SBS/SBR PG 70-22" AND FOR NON-POLYMERIZED HMA THE "AC TYPE" SHALL BE "PG 64-22" UNLESS MODIFIED BY DISTRICT ONE SPECIAL PROVISIONS.
 NOTE 3: FOR "PERCENT OF RAP" SEE DISTRICT ONE SPECIAL PROVISIONS.

FILE NAME = D160K64-SHT-TYPICAL02.dgn	USER NAME = jletour	DESIGNED - JPW	REVISED -
		DRAWN - JPW	REVISED -
		CHECKED - MJT	REVISED -
		DATE - 12/17/10	REVISED -

F.A.P. RTE. 330	SECTION 73 R-B	COUNTY COOK	TOTAL SHEETS 136	SHEET NO. 9
TS-02			CONTRACT NO. 60K64	
[ILLINOIS] FED. AID PROJECT				