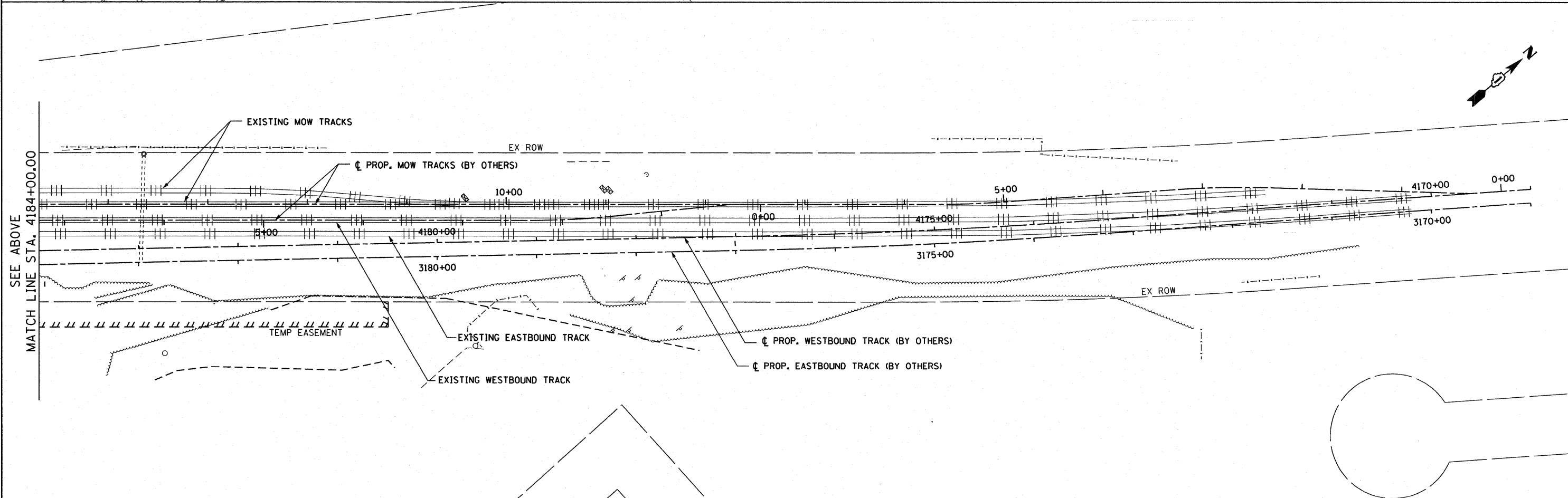


**NOTES:**  
 1. PAVEMENT REMOVAL SHOWN ON US 45 TO TAKE PLACE DURING MOT STAGE 3 IN ORDER TO CONSTRUCT CENTER PIER OF BRIDGE.  
 2. SEE MOT SHEETS FOR ADDITIONAL ROADWAY REMOVALS

**EXISTING LEGEND**  
 [Hatched Box] TREE REMOVAL, ACRE  
 [Cross-hatched Box] PAVEMENT REMOVAL  
 [Dashed Line] LINEAR REMOVAL ITEM



**McDonough Associates Inc.**  
 Engineers / Architects  
 130 East Randolph Street, Chicago, Illinois 60601

FILE NAME = D160K64-SHT-REM82.dgn  
 USER NAME = jletour  
 PLOT SCALE = 1/50  
 PLOT DATE = 1/27/2011

DESIGNED - BA  
 DRAWN - BA  
 CHECKED - MJT  
 DATE - 12/17/10

REVISED -  
 REVISED -  
 REVISED -  
 REVISED -

**STATE OF ILLINOIS  
 DEPARTMENT OF TRANSPORTATION**

**EXISTING PLAN AND REMOVALS**  
 SCALE: 1"=50' SHEET NO. 2 OF 2 SHEETS STA. TO STA.

|                             |                |                    |                  |              |
|-----------------------------|----------------|--------------------|------------------|--------------|
| F.A.P. RTE. 330             | SECTION 73 R-B | COUNTY COOK        | TOTAL SHEETS 136 | SHEET NO. 14 |
| <b>EX-02</b>                |                | CONTRACT NO. 60K64 |                  |              |
| [ILLINOIS] FED. AID PROJECT |                |                    |                  |              |