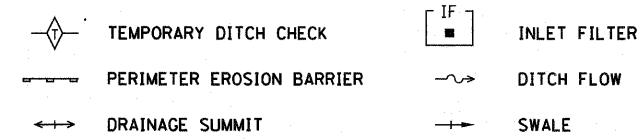


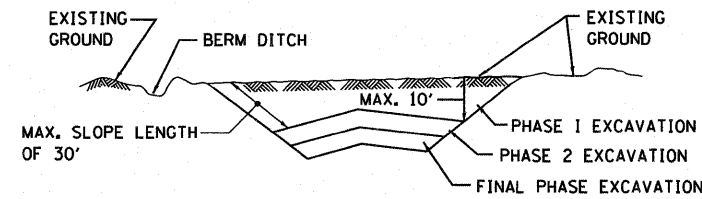
**EROSION AND SEDIMENT CONTROL
GENERAL NOTES**

- THE WORK DESCRIBED ON THESE DRAWINGS IS AN INTEGRAL PART OF THE STORM WATER POLLUTION PREVENTION PLAN USED TO OBTAIN A NPDES PERMIT FROM IEPA FOR THE CONSTRUCTION OF THIS PROJECT.
- THE PURPOSE OF THE EROSION AND SEDIMENT CONTROL MEASURES INCLUDED FOR THIS PROJECT IS TO LIMIT THE SEDIMENT POLLUTION IMPACT OF ANY STORM WATER DISCHARGES THAT ORIGINATE ON THIS SITE OR OFF-SITE FLOWS THAT FLOW OVER THE DISTURBED AREAS ON DOWNSTREAM AREAS.
- IT IS THE RESPONSIBILITY OF THE CONTRACTOR TO ENSURE THAT SEDIMENT TRANSPORT OFF THE SITE IS REDUCED BY A COMBINATION OF MINIMIZATION OF EROSION AT THE SOURCE AND INSTALLATION OF SPECIFIC MEASURES TO CONTROL OR REDUCE THE TRANSPORT OF SEDIMENT. A COPY OF THE EROSION AND SEDIMENT CONTROL SCHEDULE BEING IMPLEMENTED BY THE CONTRACTOR WILL BE ON THE CONSTRUCTION SITE AT ALL TIMES.
- TO THE MAXIMUM EXTENT POSSIBLE, ALL FLOWS ORIGINATING OFF THE CONSTRUCTION SITE WILL BE DIVERTED AROUND DISTURBED AREAS OR WILL BE CONVEYED THROUGH THE SITE IN A MANNER THAT UNTREATED ON-SITE RUNOFF DOES NOT MIX WITH THE OFF-SITE RUNOFF.
- ALL RUNOFF ORIGINATING ON DISTURBED AREAS ASSOCIATED WITH THIS PROJECT WILL PASS THROUGH ONE OR MORE MEASURES THAT WILL MINIMIZE THE OFF-SITE SEDIMENT IMPACTS OF THE CONSTRUCTION ACTIVITY.
- ALL PERMANENT SEDIMENT BASINS, PERMANENT STORM WATER CONTROL MEASURES, AND RUNOFF CONTROL MEASURES REQUIRED TO KEEP OFF-SITE RUNOFF FROM FLOWING OVER THE CONSTRUCTION AREA WILL BE INSTALLED BEFORE CLEARING AND STRIPPING OF THE SITE PROCEEDS. PRIOR TO PROCEEDING WITH GENERAL EARTHWORK ON A PROJECT THE CONTRACTOR WILL OBTAIN APPROVAL OF HIS PROPOSED EARTHWORK AND STABILIZATION SCHEDULE.
- A MAXIMUM OF 10 ACRES MAY BE IN SOME STAGE OF GRADING AT A SINGLE TIME. ADDITIONAL AREAS (UP TO 10 ACRES) MAY BE CLEARED BUT WILL NOT BE STRIPPED OF VEGETATION UNTIL THE GRADED AREAS HAVE BEEN PROTECTED FROM EROSION THROUGH INSTALLATION OF EITHER TEMPORARY OR PERMANENT MEASURES. WHENEVER POSSIBLE, THE GRADING WILL BE COMPLETED TO THE DESIGN GRADE AND THE PERMANENT VEGETATION PLAN IMPLEMENTED PRIOR TO STARTING GRADING ACTIVITIES ON THE NEXT SITE.
 - WHEN BALANCING EARTHWORK (BORROW FROM A CUT USED AS FILL AT A LOCATION DISTANT FROM THE CUT) THE ENGINEER WILL CONSIDER ALLOWING MORE THAN 10 ACRES OF GRADING AT A TIME. THE 10 ACRE LIMITATION DOES NOT INCLUDE HAUL ROADS, BRIDGE CONSTRUCTION WORK AREAS AND STORAGE AREAS.
 - VARIATIONS TO THE ABOVE MAY BE CONSIDERED BY THE ENGINEER UNDER ALL THE FOLLOWING CONDITIONS:
 - IF THE CONTRACTOR FALLS BEHIND SCHEDULE THROUGH NO FAULT OF HIS OWN.
 - THE CONTRACTOR MUST PRESENT A SCHEDULE DEMONSTRATING THE NEED FOR SUCH VARIATION IN ORDER TO COMPLETE THE WORK ON TIME.
 - THE CONTRACTOR MUST COMPLY WITH ALL OTHER CONTRACT REQUIREMENTS.
- DISTURBED AREAS ARE TO BE PROTECTED FROM EROSION IN A TIMELY MANNER. UPON COMPLETION OF GRADING OR CONSTRUCTION, THE AREA WILL BE STABILIZED (USING PERMANENT MEASURES WHEN POSSIBLE) WITHIN 7 CALENDAR DAYS. TEMPORARY STABILIZATION THROUGH USE OF GROUND COVER, MULCHING, OR OTHER APPROVED MEASURES WILL BE INSTALLED WITHIN 7 DAYS WHENEVER SITE DEVELOPMENT WORK, GRADING OR OTHER EARTH DISTURBING ACTIVITIES CEASE TO BE CONTINUOUS FOR A PERIOD EXCEEDING 14 CALENDAR DAYS. THE 7/14 DAY REQUIREMENT IS TAKEN TO MEAN THAT THE STABILIZATION OPERATION IS COMPLETE OR NEARING COMPLETION IN THE DEFINED TIME.
- STABILIZATION OF CUT OR FILL SLOPES WITH TEMPORARY OR PERMANENT EROSION CONTROL MEASURES IS REQUIRED WHENEVER THE CUT OR FILL ACTIVITY REACHES 10 FEET VERTICALLY OR THE FINISHED SLOPE EQUALS 30 FEET, WHICHEVER IS MORE RESTRICTIVE. ONCE THE STABILIZATION MEASURES ARE INSTALLED, THE PLACEMENT OF FILL EXCAVATION ACTIVITIES ARE ALLOWED TO PROCEED.
- THE CONTRACTOR SHALL DESIGNATE ONE OF HIS EMPLOYEES AS RESPONSIBLE FOR IMPLEMENTATION OF THE EROSION AND SEDIMENT CONTROL PLAN ON ALL DISTURBED AREAS. THIS PERSON IS TO BE KNOWLEDGEABLE ABOUT INSTALLATION AND MAINTENANCE OF THE REQUIRED MEASURES AND IS TO HAVE TAKEN AN APPROVED EROSION AND SEDIMENT CONTROL COURSE. THIS EMPLOYEE IS TO HAVE THE AUTHORITY TO CARRY OUT THE IMPLEMENTATION OF ANY INSTRUCTIONS CONCERNING THE EROSION AND SEDIMENT CONTROL PLAN GIVEN BY THE ENGINEER. ALL MEASURES WILL BE INSPECTED BY THIS INDIVIDUAL AND THE ENGINEER ON A REGULAR BASIS (AT LEAST ONCE EVERY 7 DAYS) AND AFTER RAINFALL EVENTS GREATER THAN 0.5 INCH OR EQUIVALENT SNOWFALL.

EROSION AND SEDIMENT CONTROL LEGEND



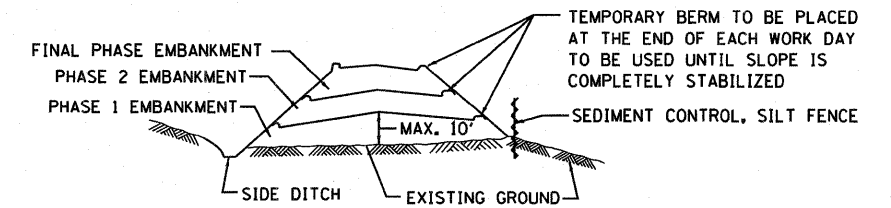
EXCAVATION PHASING PLAN-CUT SECTION



NOTES:

- ALL CUT SLOPES SHALL BE EXCAVATED AND STABILIZED (PLACE TOPSOIL, PREPARE SEEDBED, APPLY SEED, PROTECT SLOPE WITH MULCH OR EROSION BLANKET) AS THE WORK PROGRESSES.
- CONSTRUCTION SEQUENCE FOR EXCAVATION:
 - EXCAVATE AND STABILIZE BERM, SIDE AND OUTLET DITCHES. PROVIDE SEDIMENT TRAPS FOR DITCHES.
 - PERFORM PHASE 1 EXCAVATION AND STABILIZE SLOPES WITH PERMANENT SEEDING.
 - PERFORM PHASE 2 EXCAVATION AND STABILIZE SLOPES WITH PERMANENT SEEDING. OVERSEED PHASE 1 SLOPES, IF REQUIRED.
 - PERFORM FINAL PHASE EXCAVATION, AND STABILIZE WITH PERMANENT VEGETATIVE PLAN ON THE ENTIRE SLOPE. STABILIZE SURFACE DRAIN DITCHES. OVERSEED PHASE 1 & 2 SLOPES, IF REQUIRED, AS DETERMINED BY THE ENGINEER.
- IF PERMANENT SEEDING CANNOT BE PLACED DUE TO CONTRACT REQUIREMENTS REGARDING PLANTING SEASONS, THE CUT SLOPE IS TO HAVE TOPSOIL PLACED AND SEEDBED PREPARED PRIOR TO USING TEMPORARY STABILIZATION WITH STRAW MULCH OR TEMPORARY SEEDING WITH EROSION BLANKET.
- THE CONTRACTOR HAS THE OPTION OF DELAYING TOPSOIL AND/OR SEEDING BEYOND THE 10 FOOT VERTICAL LIMITATION, (SEE GENERAL NOTE 9) IF SO THE CUT SLOPE MUST BE TEMPORARILY STABILIZED AT NO COST TO THE DEPARTMENT.
- ONCE THE EXCAVATION WITHIN A SPECIFIC AREA HAS BEGUN, THE OPERATION SHALL BE CONTINUOUS FROM STRIPPING THROUGH THE COMPLETION OF THE GRADING AND PLACEMENT OF SLOPE STABILIZATION MEASURES. ANY INTERRUPTIONS IN THE OPERATION 14 DAYS OR MORE MUST BE APPROVED BY THE ENGINEER. ANY VIOLATIONS OF THIS REQUIREMENT WILL RESULT IN THE CONTRACTOR ASSUMING THE RESPONSIBILITY OF PLACING TEMPORARY STABILIZATION AT HIS OWN COST AND EXPENSE AS DIRECTED BY THE ENGINEER.

EMBANKMENT PHASING PLAN-FILL SECTION



NOTES:

- THE EMBANKMENT WILL BE MADE IN STAGES NOT TO EXCEED 10'. THE EMBANKMENT SLOPES WILL BE STABILIZED USING TEMPORARY MEASURES BEFORE BEGINNING NEXT STAGE.
- AT THE END OF EACH WORK DAY TEMPORARY BERMS (EARTH) AND TEMPORARY PIPE SLOPE DRAINS WILL BE CONSTRUCTED ALONG THE TOP EDGE(S) OF THE EMBANKMENT TO INTERCEPT SURFACE RUNOFF.
- CONSTRUCTION SEQUENCE FOR EMBANKMENT
 - EXCAVATE AND STABILIZE SIDE DITCH AND/OR INSTALL PROPOSED PERIMETER CONTROLS AT THE TOE OF SLOPE.
 - PLACE PHASE 1 EMBANKMENT AND STABILIZE WITH TEMPORARY SEEDING AND MULCH.
 - PLACE PHASE 2 EMBANKMENT AND STABILIZE WITH TEMPORARY SEEDING AND MULCH.
 - PLACE FINAL PHASE EMBANKMENT AND STABILIZE WITH PERMANENT VEGETATIVE PLAN ON THE ENTIRE SLOPE.
- ONCE THE PLACEMENT OF FILL WITHIN A SPECIFIC AREA HAS BEGUN, THE OPERATION SHALL BE CONTINUOUS FROM STRIPPING THROUGH THE COMPLETION OF THE GRADING AND PLACEMENT OF PERMANENT VEGETATIVE PLAN. ANY INTERRUPTIONS IN THE OPERATION OF 14 DAYS OR MORE MUST BE APPROVED BY THE ENGINEER. ANY VIOLATION OF THIS REQUIREMENT WILL RESULT IN THE CONTRACTOR ASSUMING THE RESPONSIBILITY OF PLACING TEMPORARY STABILIZATION AT HIS OWN COST AND EXPENSE AS DIRECTED BY THE ENGINEER.

SEE NEXT SHEET FOR CONTINUATION

McDonough Associates Inc.
Engineers / Architects
130 East Randolph Street Chicago, Illinois 60601

FILE NAME = D168K64-SHT-EROS01.dgn	USER NAME = jletour	DESIGNED - JCL	REVISED -	STATE OF ILLINOIS DEPARTMENT OF TRANSPORTATION	EROSION AND SEDIMENT CONTROL GENERAL NOTES AND LEGEND		F.A.P. RTE. 330	SECTION 73 R-B	COUNTY COOK	TOTAL SHEETS 136	SHEET NO. 27
PLOT SCALE = 1:50	CHECKED - MJT	DATE - 12/17/10	REVISED -		SCALE: N.T.S.	SHEET NO. 1 OF 2 SHEETS	STA. TO STA.	EN-01		CONTRACT NO. 60K64	
PLOT DATE = 1/27/2011	DATE - 12/17/10	REVISED -	REVISED -		ILLINOIS FED. AID PROJECT						