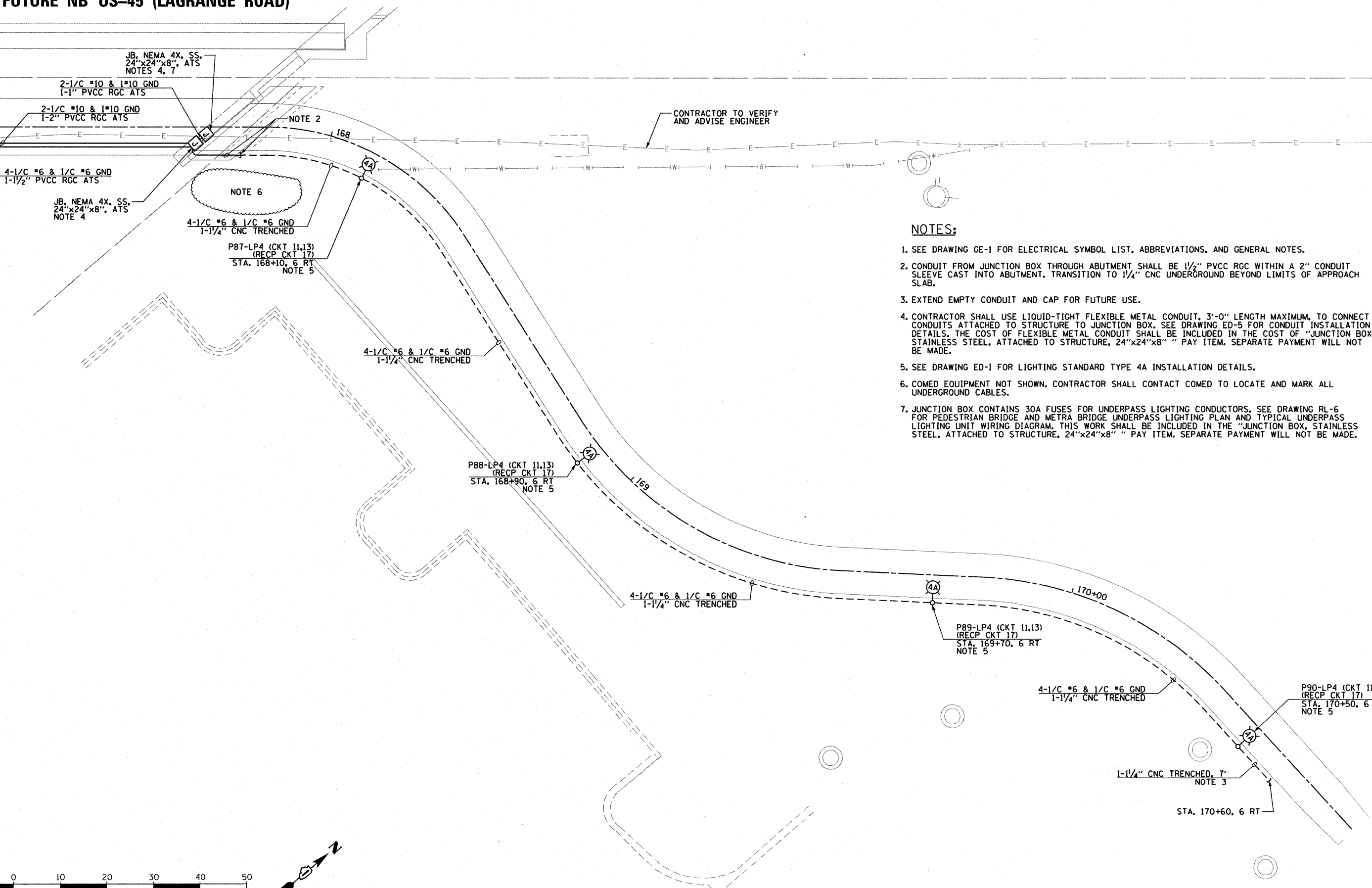


FUTURE NB US-45 (LAGRANGE ROAD)

MATCH LINE SEE DRAWING RL-4
PATH STA 167+25

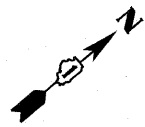
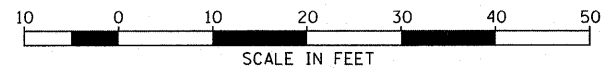


NOTES:

1. SEE DRAWING GE-1 FOR ELECTRICAL SYMBOL LIST, ABBREVIATIONS, AND GENERAL NOTES.
2. CONDUIT FROM JUNCTION BOX THROUGH ABUTMENT SHALL BE 1/2" PVC RGC WITHIN A 2" CONDUIT SLEEVE CAST INTO ABUTMENT. TRANSITION TO 1/4" CNC UNDERGROUND BEYOND LIMITS OF APPROACH SLAB.
3. EXTEND EMPTY CONDUIT AND CAP FOR FUTURE USE.
4. CONTRACTOR SHALL USE LIQUID-TIGHT FLEXIBLE METAL CONDUIT, 3'-0" LENGTH MAXIMUM, TO CONNECT CONDUITS ATTACHED TO STRUCTURE TO JUNCTION BOX. SEE DRAWING ED-5 FOR CONDUIT INSTALLATION DETAILS. THE COST OF FLEXIBLE METAL CONDUIT SHALL BE INCLUDED IN THE COST OF "JUNCTION BOX, STAINLESS STEEL, ATTACHED TO STRUCTURE, 24"x24"x8" " PAY ITEM. SEPARATE PAYMENT WILL NOT BE MADE.
5. SEE DRAWING ED-1 FOR LIGHTING STANDARD TYPE 4A INSTALLATION DETAILS.
6. COMED EQUIPMENT NOT SHOWN. CONTRACTOR SHALL CONTACT COMED TO LOCATE AND MARK ALL UNDERGROUND CABLES.
7. JUNCTION BOX CONTAINS 30A FUSES FOR UNDERPASS LIGHTING CONDUCTORS. SEE DRAWING RL-6 FOR PEDESTRIAN BRIDGE AND METRA BRIDGE UNDERPASS LIGHTING PLAN AND TYPICAL UNDERPASS LIGHTING UNIT WIRING DIAGRAM. THIS WORK SHALL BE INCLUDED IN THE "JUNCTION BOX, STAINLESS STEEL, ATTACHED TO STRUCTURE, 24"x24"x8" " PAY ITEM. SEPARATE PAYMENT WILL NOT BE MADE.

CONTRACTOR TO VERIFY AND ADVISE ENGINEER

McDonough Associates Inc.
 Engineers / Architects
 130 East Randolph Street Chicago, Illinois 60601



FILE NAME = D160K64-SHT-RL5.dgn	USER NAME = jlojour	DESIGNED - JLW	REVISED -	STATE OF ILLINOIS DEPARTMENT OF TRANSPORTATION	MULTI-USE PATH PROPOSED LIGHTING PLAN	F.A.P. RTE. 330	SECTION 73 R-B	COUNTY COOK	TOTAL SHEETS 136	SHEET NO. 46	
PLOT SCALE = 1:10	CHECKED - KMY	DATE - 12/17/10	REVISED -			SCALE: 1" = 10' SHEET NO. 5 OF 5 SHEETS STA. 167+25 TO STA. 170+80					
PLOT DATE = 1/27/2011	DATE - 12/17/10	REVISED -	REVISED -			ILLINOIS FED. AID PROJECT					
						CONTRACT NO. 60K64					