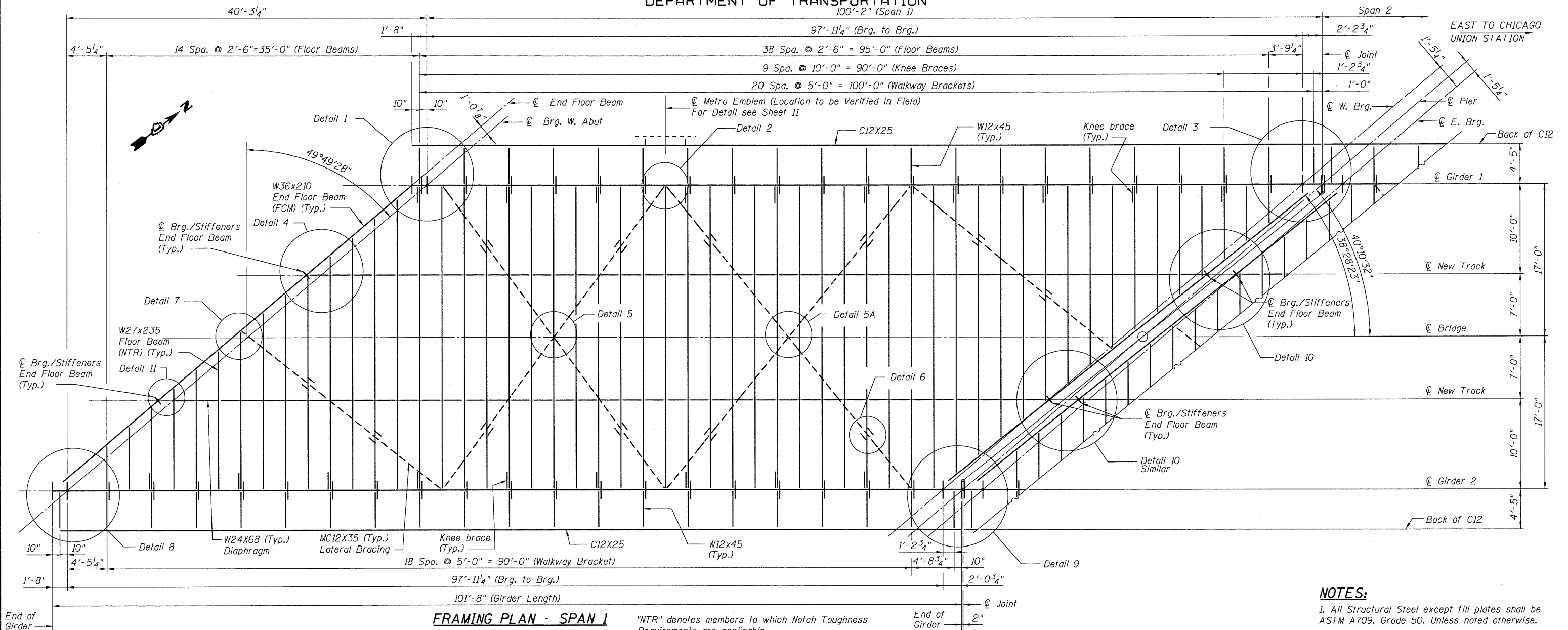


STATE OF ILLINOIS  
DEPARTMENT OF TRANSPORTATION  
100'-2" (Span 1)



FRAMING PLAN - SPAN 1

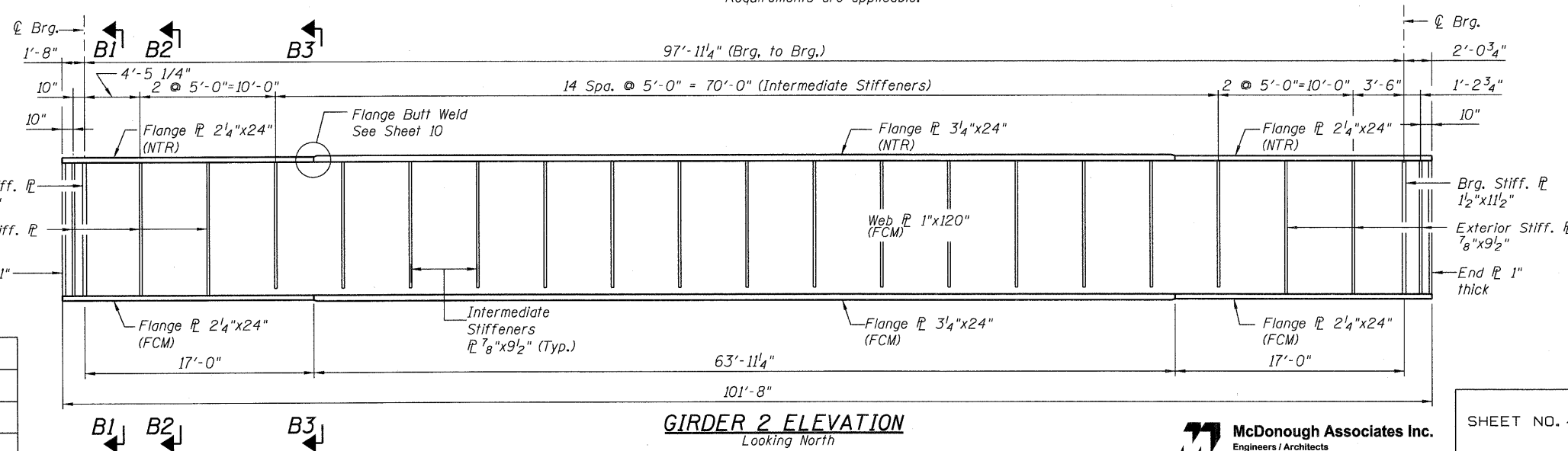
"NTR" denotes members to which Notch Toughness Requirements are applicable.

NOTES:

1. All Structural Steel except fill plates shall be ASTM A709, Grade 50. Unless noted otherwise.
2. "NTR" Indicates Notch Toughness Requirements.
3. All Floor Beams shall be "NTR".
4. FCM Denotes Fracture Critical Members.
5. For all FCM Members NTR, shall also be applied.
6. For Sections B1, B2 & B3 see Sheet 6.
7. For Details see Sheets 6 through 10.
8. See Sheet 7 for location of jacking stiffeners.
9. See Sheet 11 for Camber Diagram.

FRAMING PLAN AND DETAILS  
SPAN 1  
STRUCTURE NO. 016-6201

DESIGNED	-KJH
CHECKED	-MGB
DRAWN	-RJ
CHECKED	-MGB



GIRDER 2 ELEVATION  
Looking North

**McDonough Associates Inc.**  
Engineers / Architects  
130 East Randolph Street Chicago, Illinois 60601

SHEET NO. 4 25 SHEETS	F.A.P. RTE. 330	SECTION 73 R-B	COUNTY COOK	TOTAL SHEETS 136	SHEET NO. 56
	CONTRACT NO. 60K64			DATE: 12/17/10	
ILLINOIS FED. AID PROJECT					